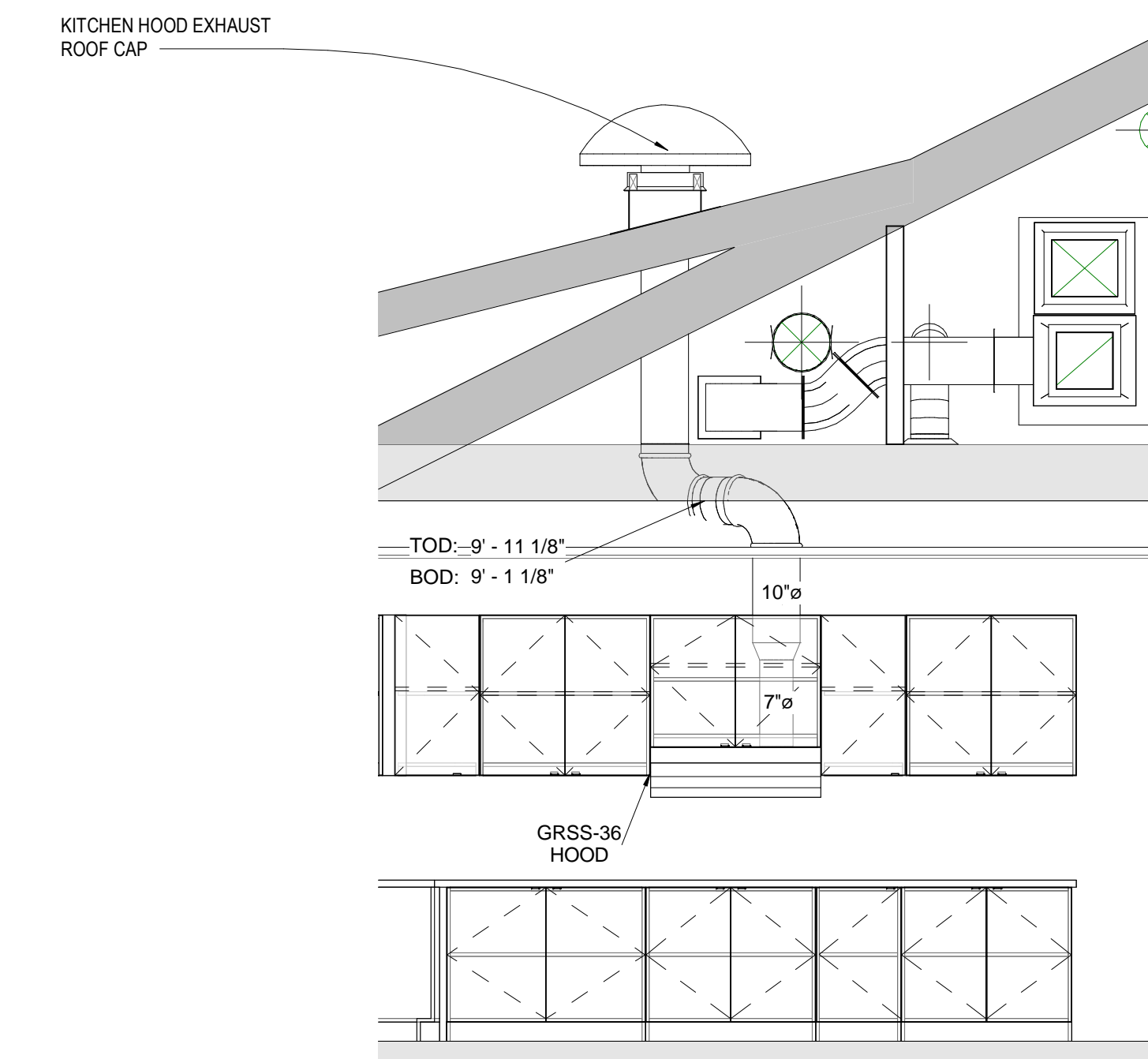
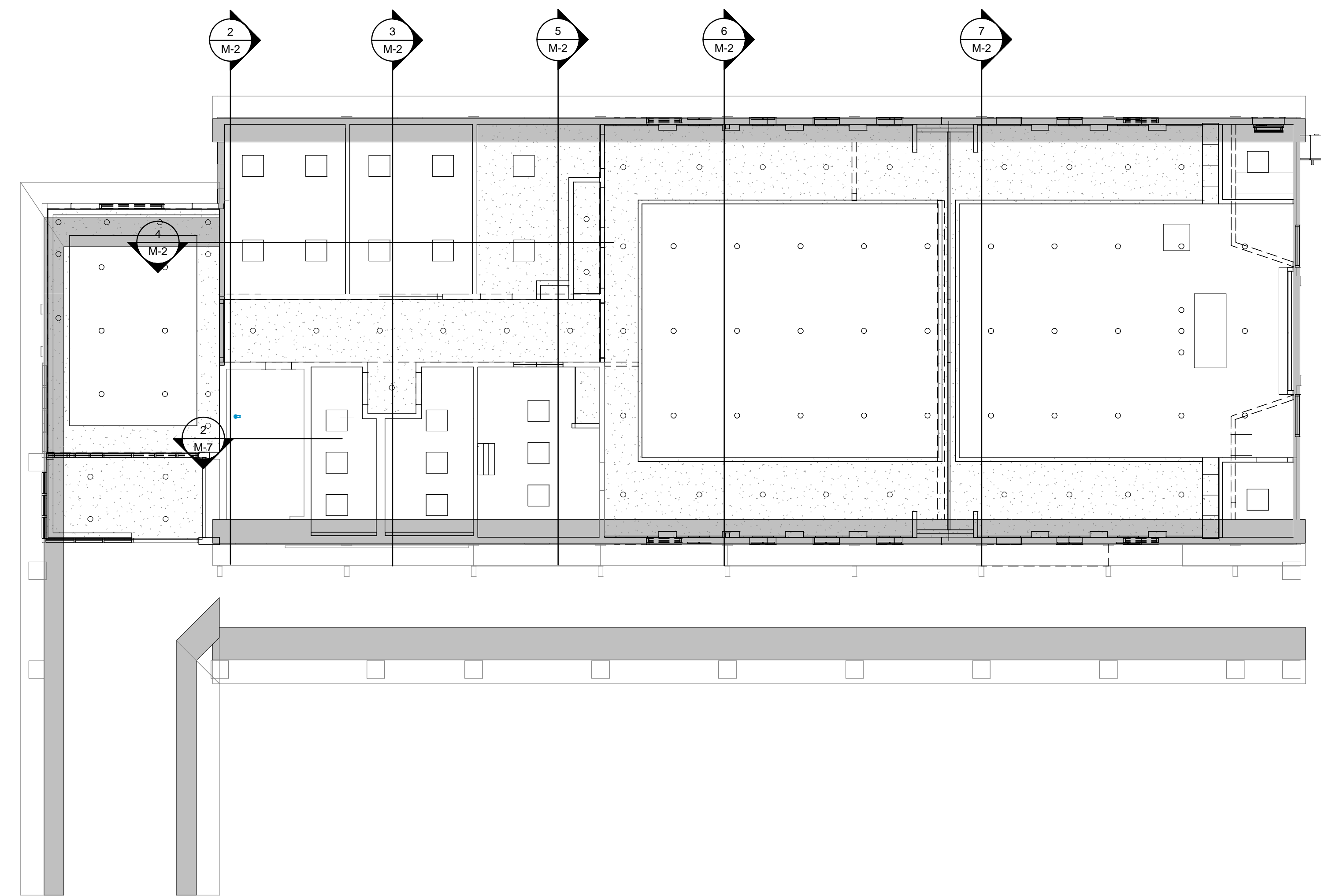
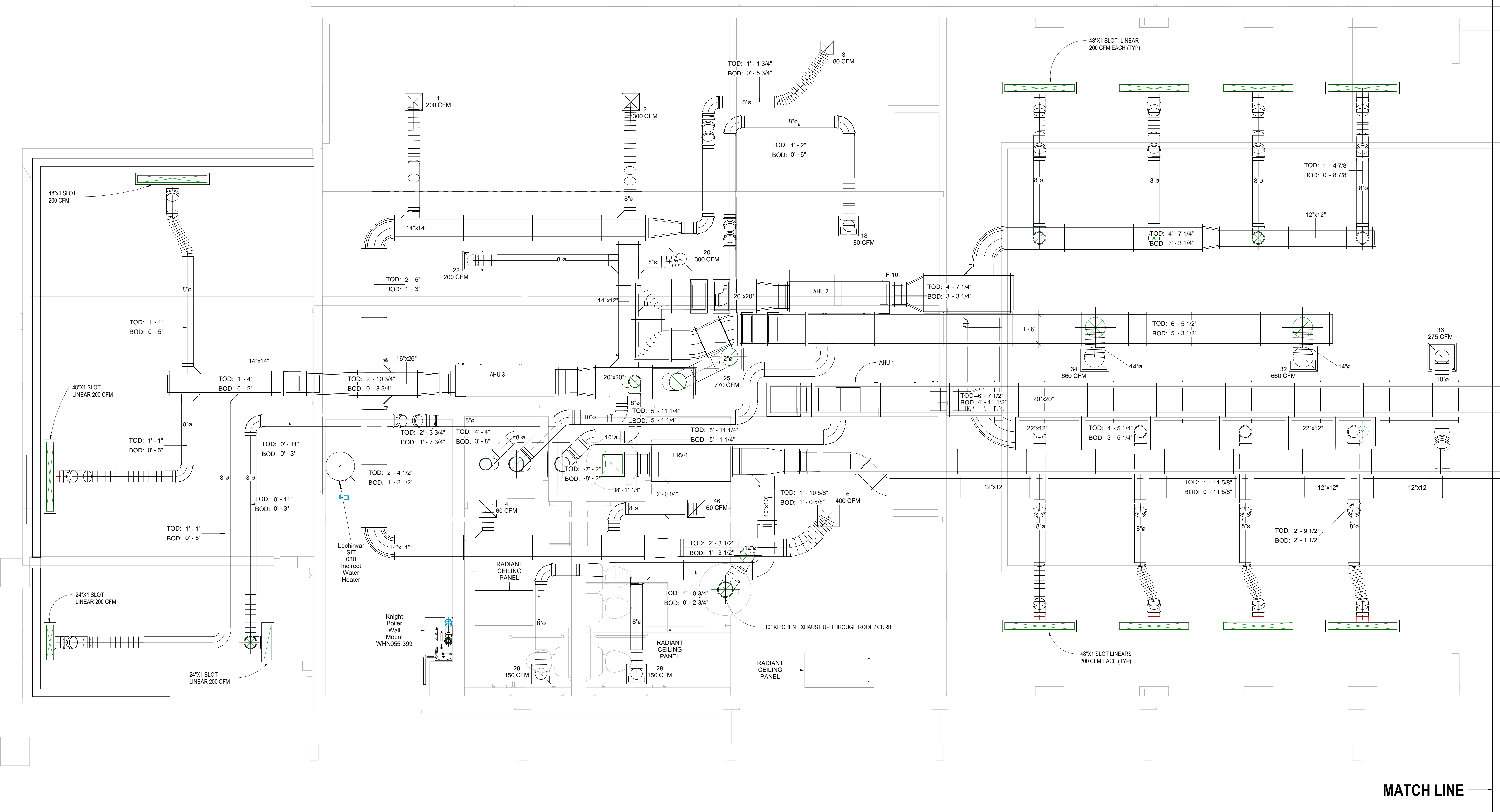


- Notes:
- 1) AHU's to be hung from existing 2x8 rafters. Load to be spread over a minimum of 2 rafters per connection point. Spring isolation hangers will carry the weight of the AHU's and ERV.
 - 2) Trans AHU's shall be equipped with over flow drain pans.
 - 3) Not all take-off dampers are shown on the shop drawing, but they are understood to be at the connection from trunkline to branchline and will be clearly located in the field for servicing and maintenance personnel.
 - 4) Duct fabrication standards are to match or exceed the standards shown on the contract / conforming drawings.
 - 5) RCD's and equipment are per approved / approved as noted submittals and are located as shown. Types and sizes are listed on the contract / conforming drawing set.

**2** Kitch Exh Section Hidden Line
3/8" = 1'-0"**3** FLOOR PLAN BUILDING SECTIONS
1/8" = 1'-0"

MATCH LINE



MATCH LINE

1 HVAC ATTIC PLAN WEST
3/8" = 1'-0"

No.	Description	Date

**QUINNIPIAC UNIVERSITY
CATHOLIC CENTER**

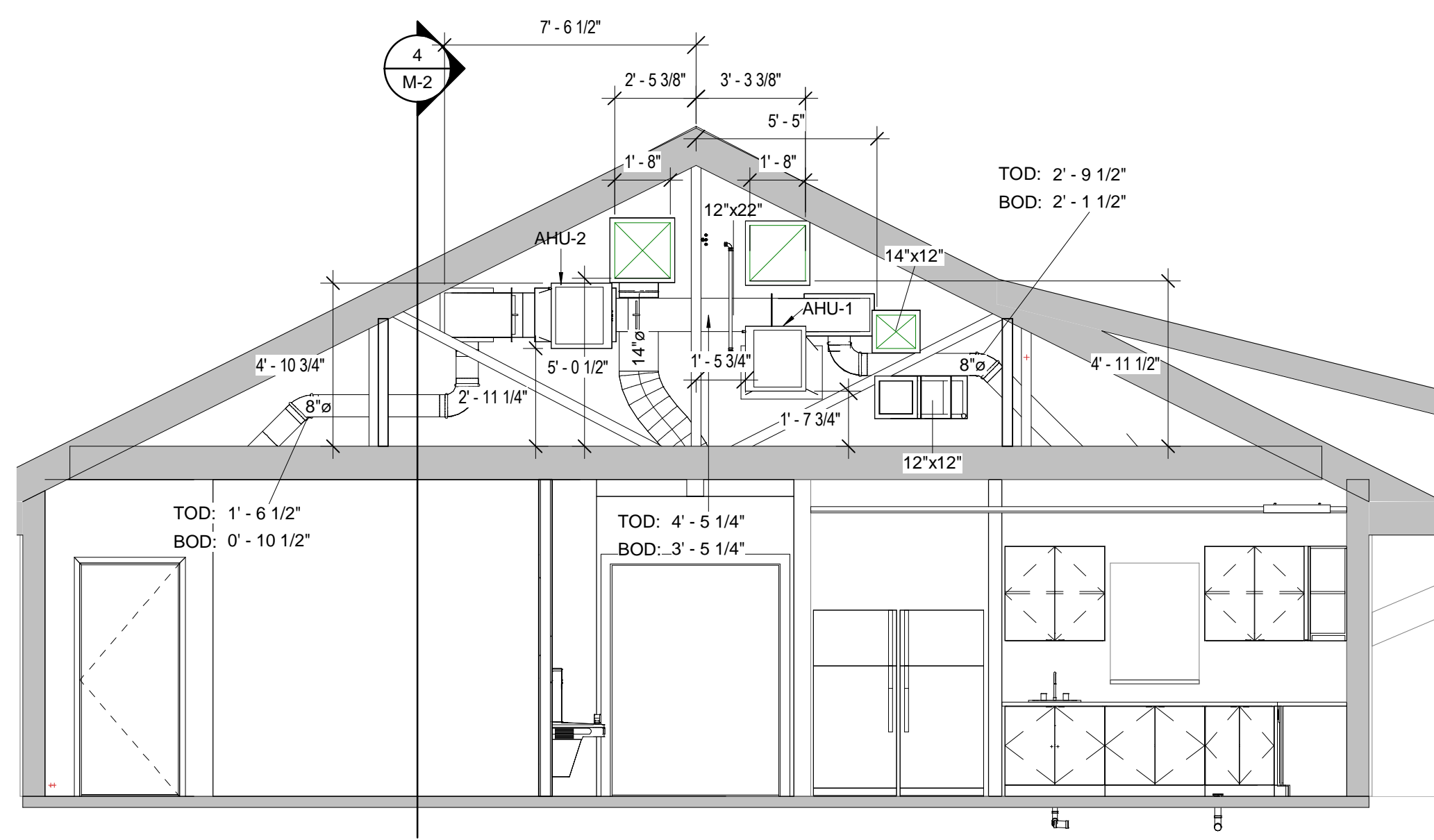
385 NEW ROAD
HAMDEN, CT 06518

HVAC ATTIC PARTIAL PLAN WEST AS-BUILT

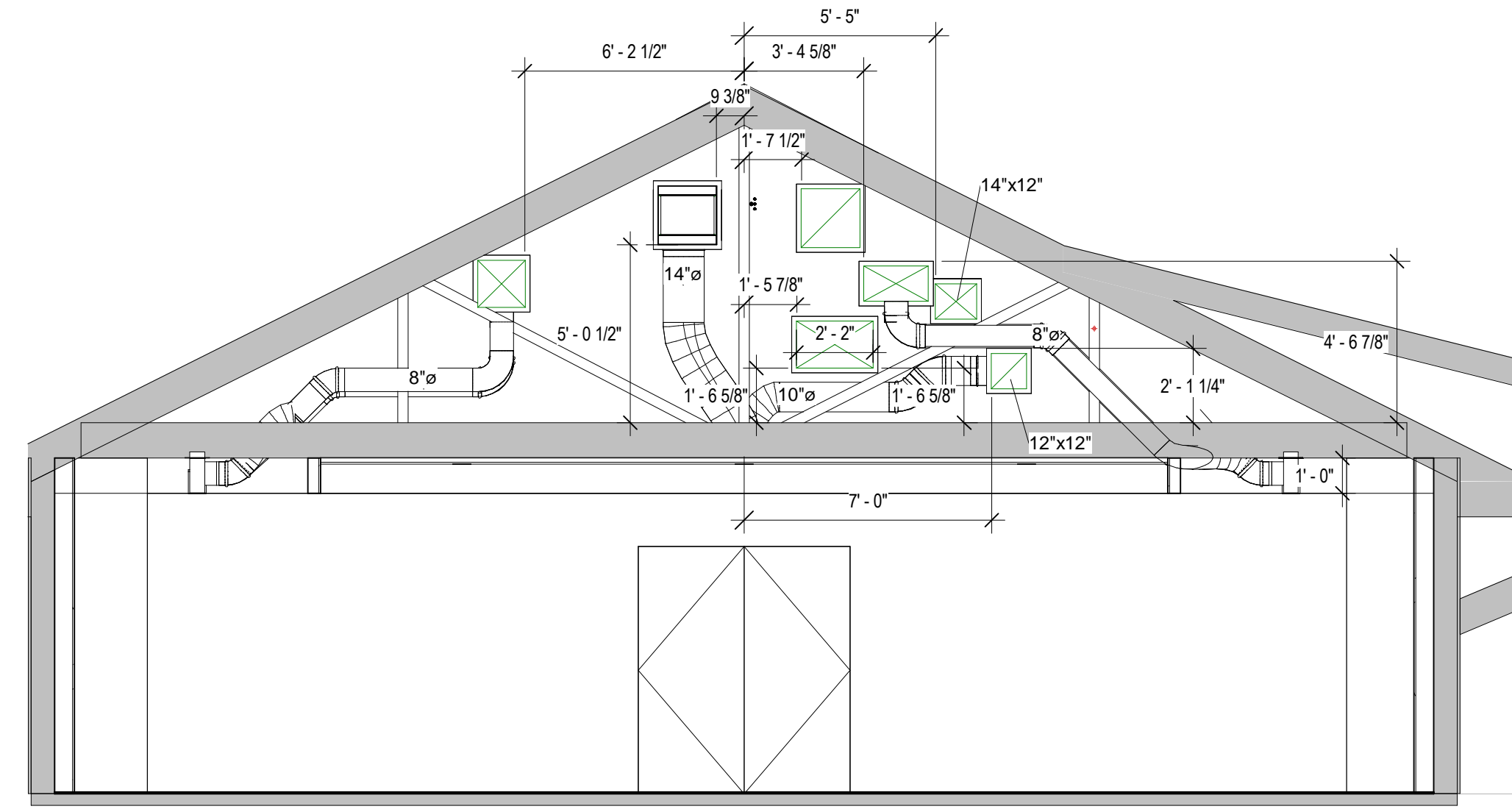
Project Number	4666
Date	6/10/17
Drawn By	T. Huizinga
Checked By	T. Huizinga

M-1

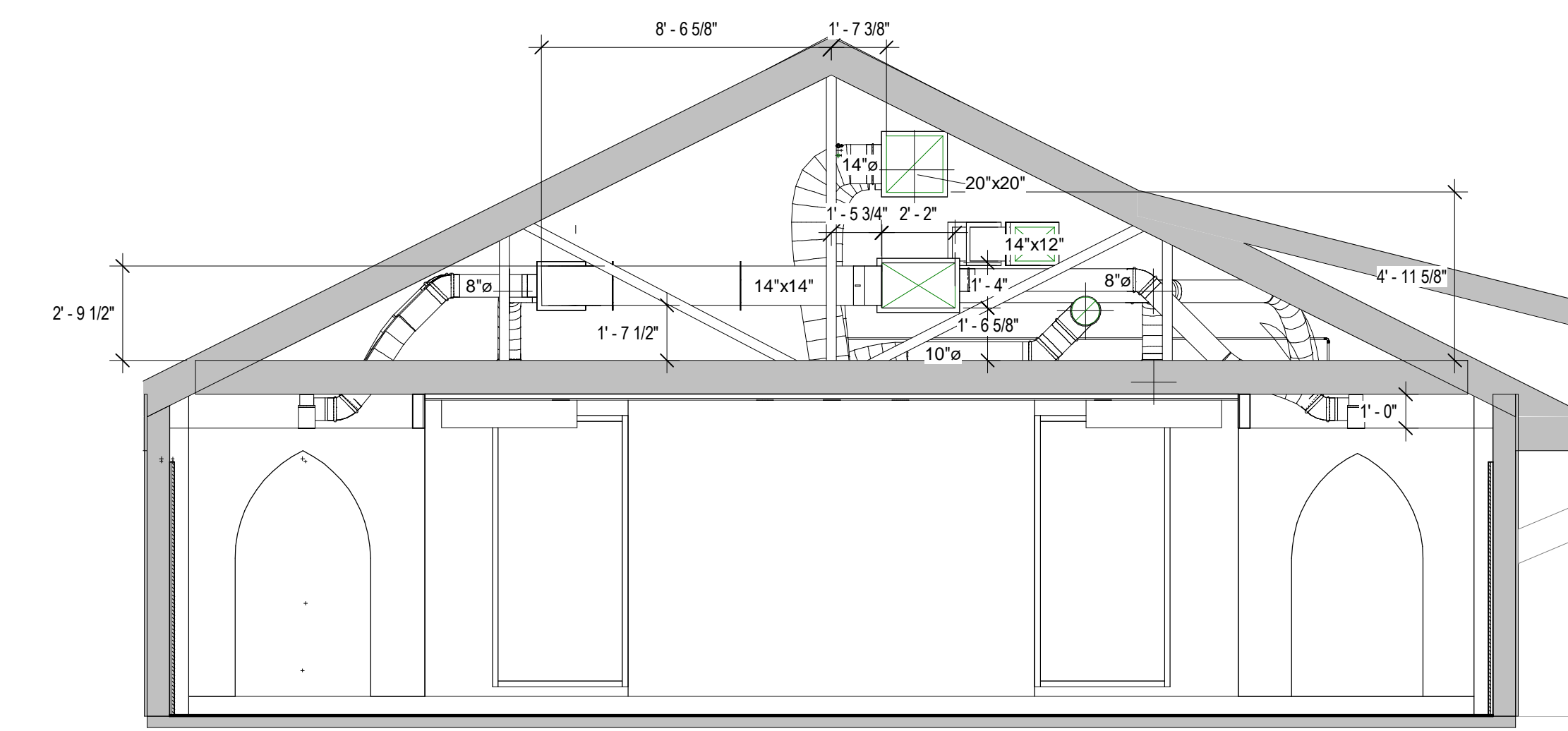
- Notes:
- AHUs to be hung from existing 2x8 rafters. Load to be spread over a minimum of 2 rafters per connection point. Spacing isolation hangers will carry the weight of the AHUs and ERV.
 - Trane AHUs shall be equipped with over flow drain pans.
 - Not all take-off dampers are shown on the shop drawing, but they are understood to be at the connection from trunkline to branchline and will be clearly located in the field for balancing and maintenance personnel.
 - Duct fabrication standards are to match or exceed the standards shown on the contract confirmed drawings.
 - RCDs and equipment are per approved / approved as noted submittals and are located as shown. Types and sizes are listed on the contract / confirmed drawing set.



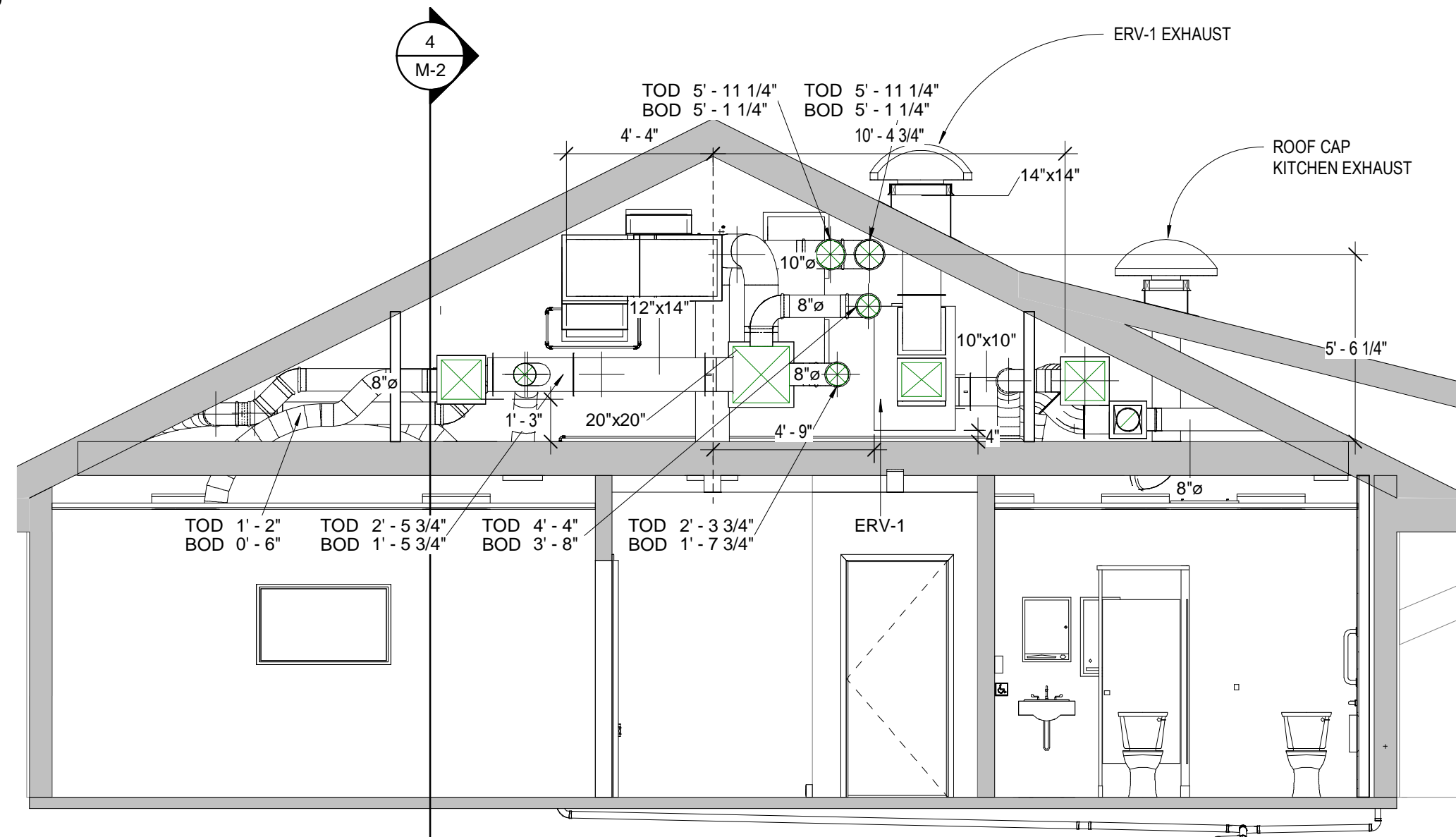
5 East Section 3
1/4" = 1'-0"



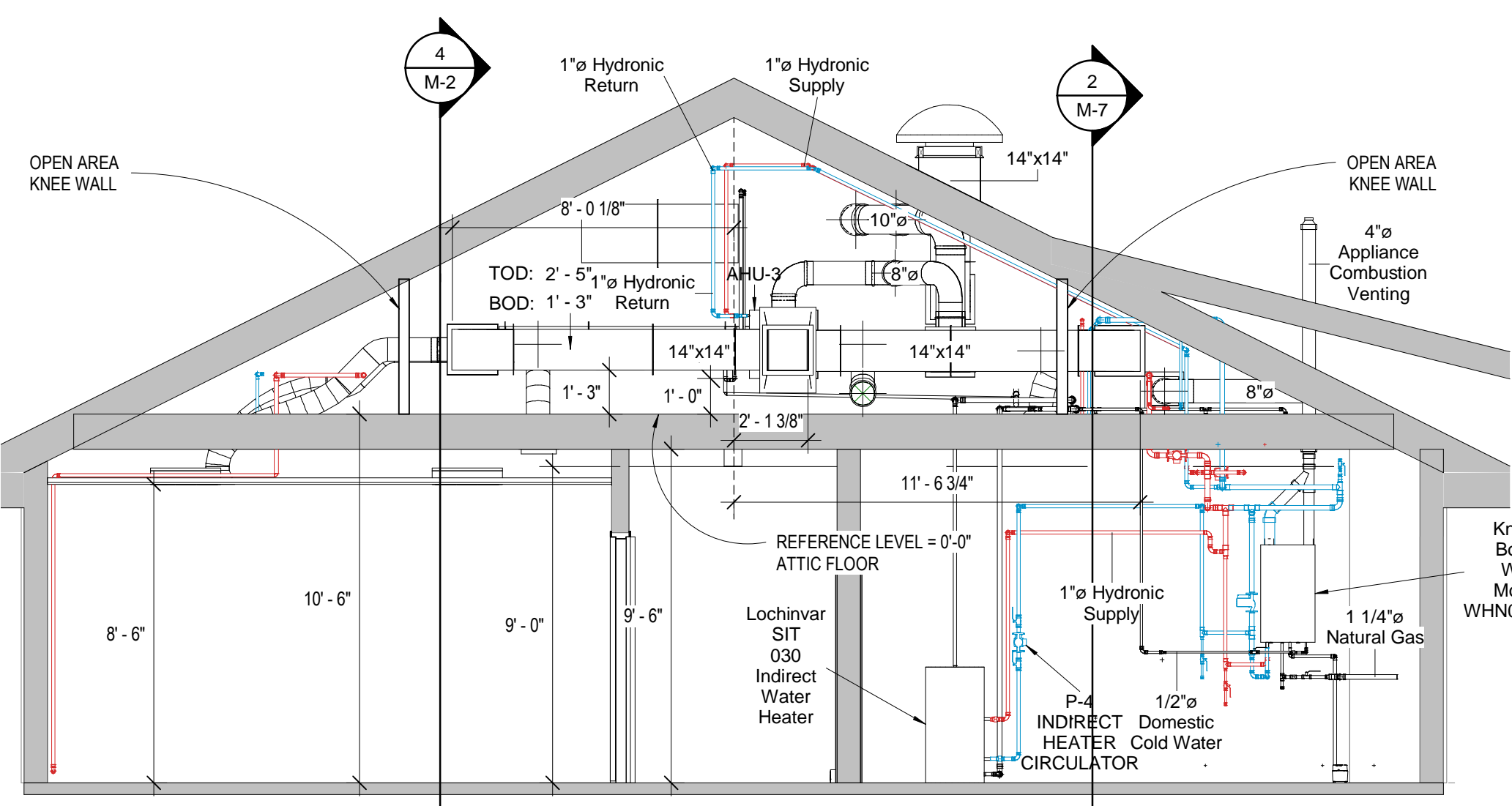
6 East Section 4
1/4" = 1'-0"



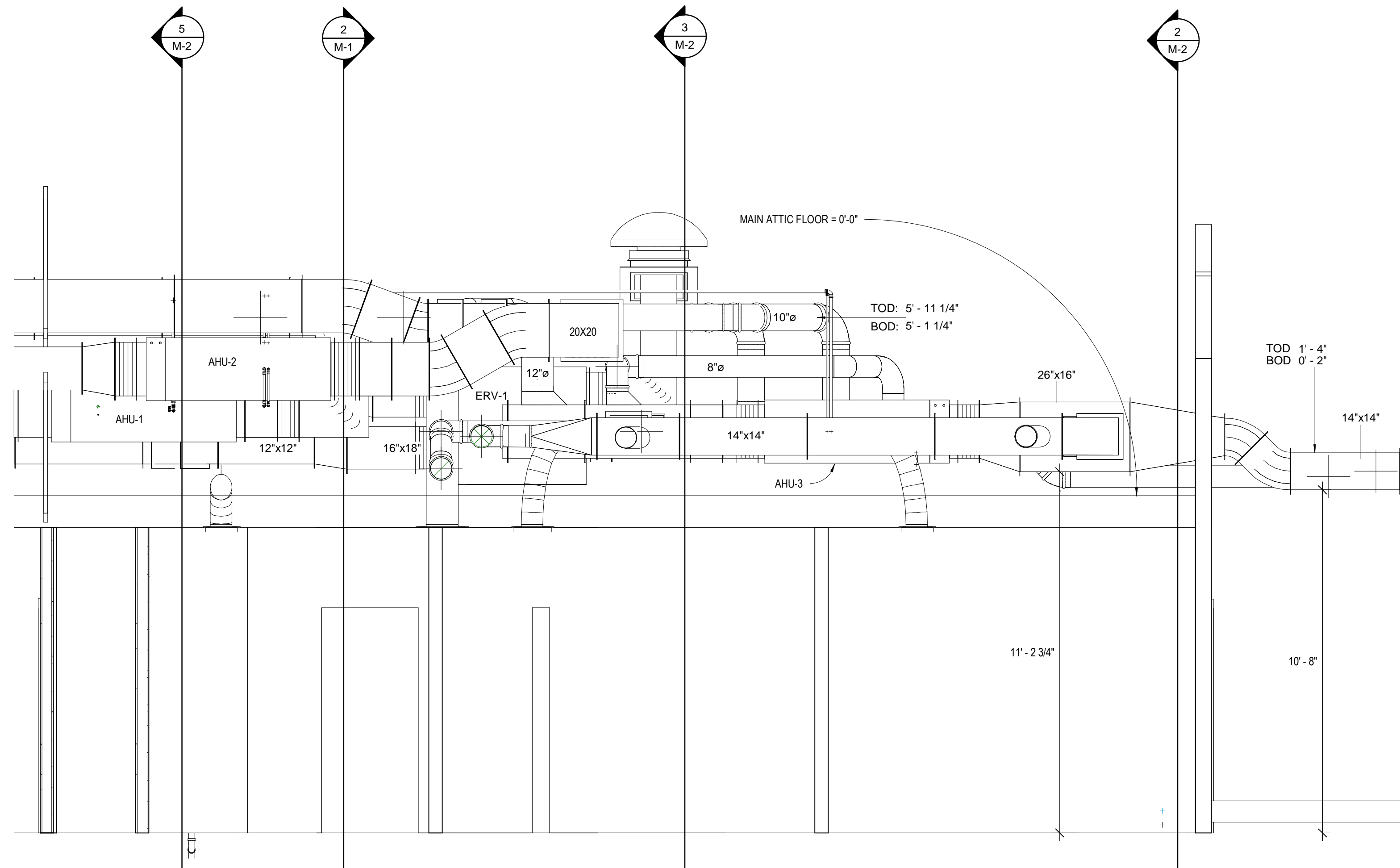
7 East Section 5
1/4" = 1'-0"



3 East Section 2
1/4" = 1'-0"

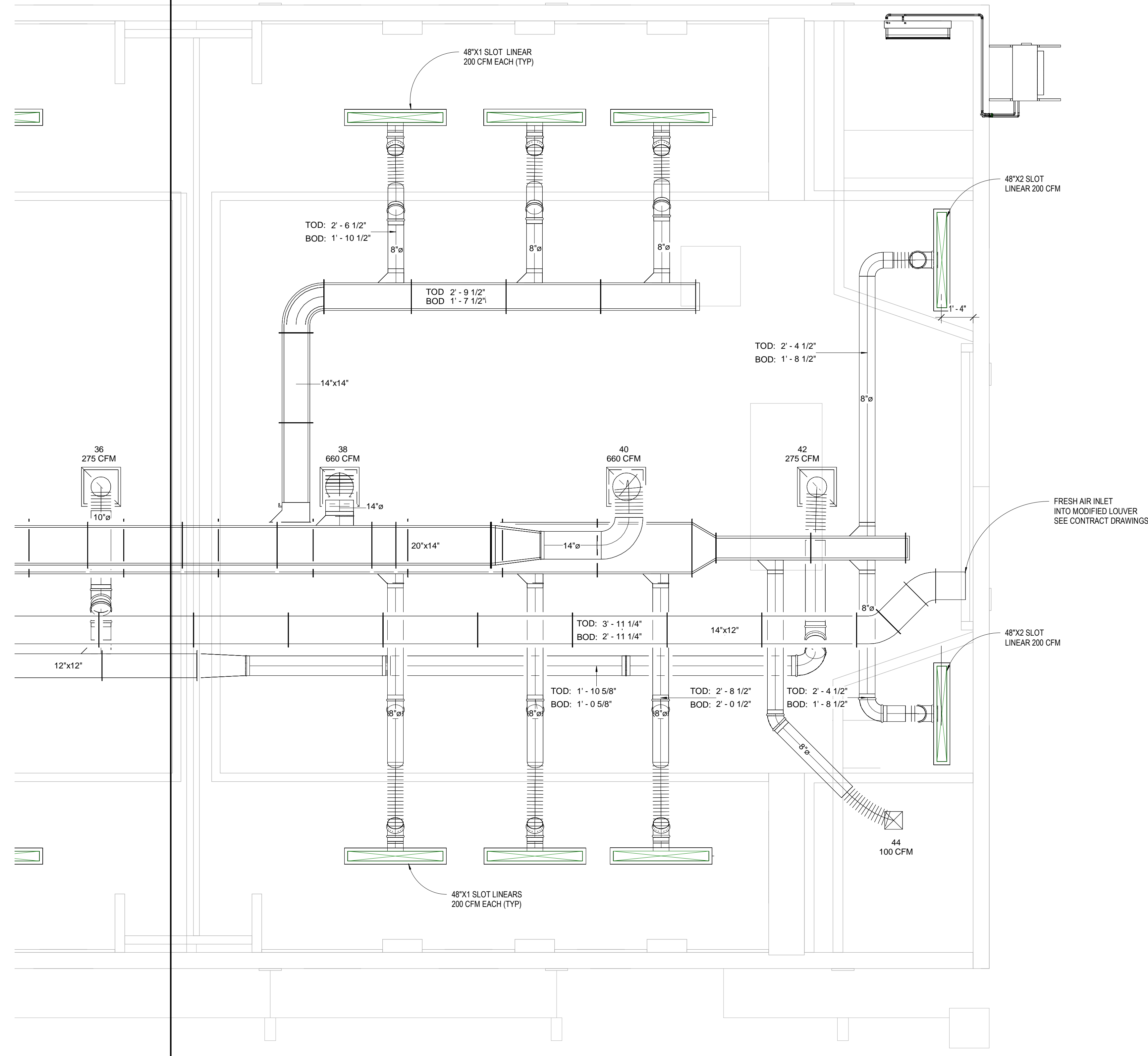


2 East Section 1
1/4" = 1'-0"



4 SOUTH SECTION 1
3/8" = 1'-0"

MATCH LINE



MATCH LINE

1 HVAC ATTIC PLAN EAST
3/8" = 1'-0"

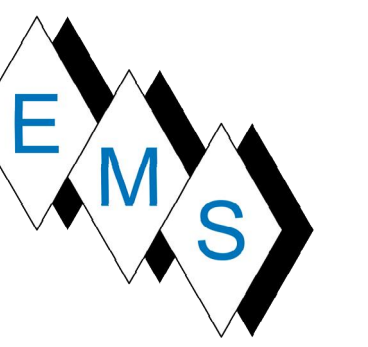
No.	Description	Date

**QUINNIPIAC UNIVERSITY
 CATHOLIC CENTER**

385 NEW ROAD
 HAMDEN, CT 06518

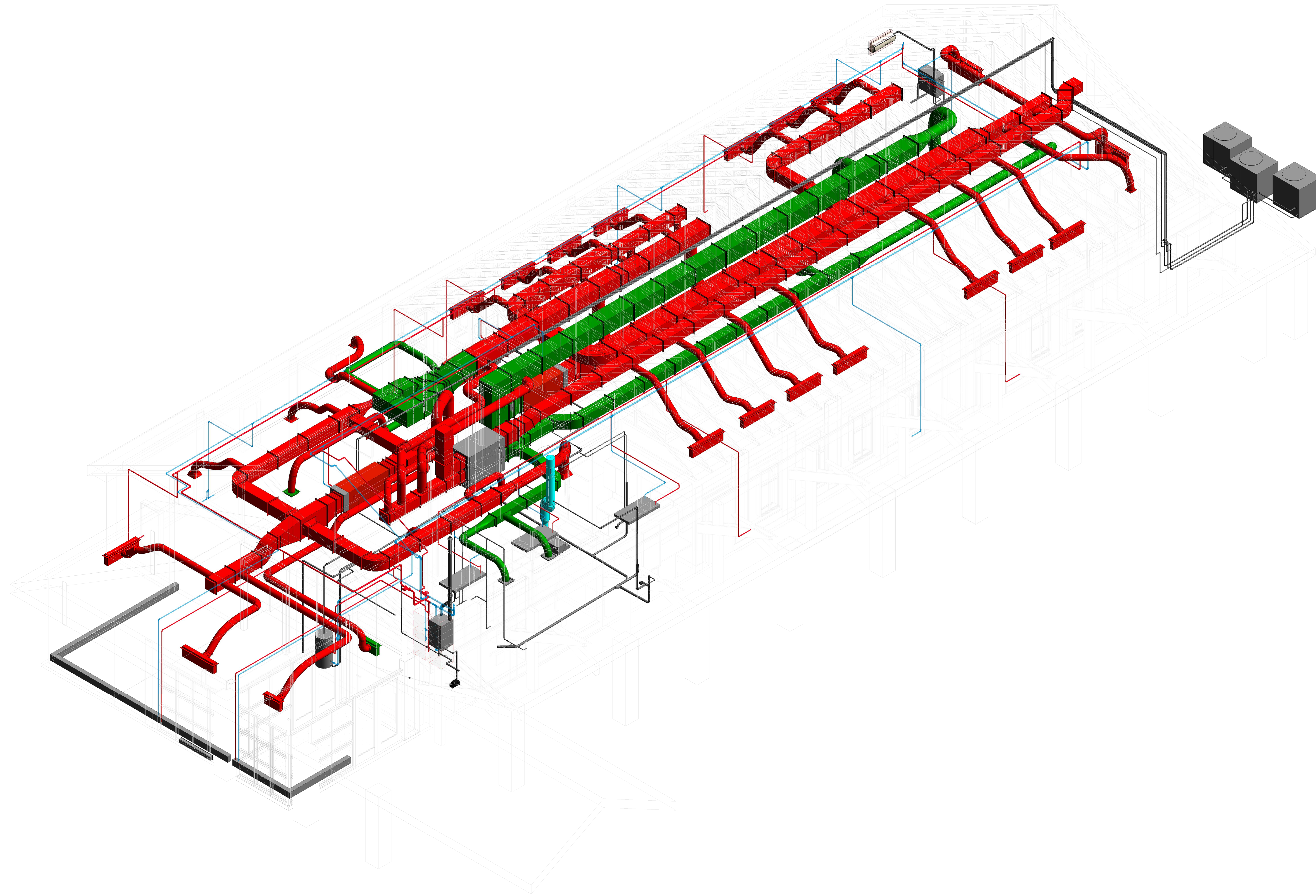
HVAC ATTIC PARTIAL PLAN EAST AS-BUILT

Project Number	4666
Date	6/10/17
Drawn By	T. Huizinga
Checked By	T. Huizinga



EASTERN MECHANICAL SERVICES
 3 Starr Street, Danbury, CT 06810
 Ph. 203.792.7668 www.emsinc.us

- Notes:
- 1) AHU's to be hung from existing 2x8 rafters. Load to be spread over a minimum of 2 rafters per connection point. Spring isolation hangers will carry the weight of the AHU's and ERV.
 - 2) Trane AHU's shall be equipped with over flow drain pans.
 - 3) Not all take-off dampers are shown on the shop drawing, but they are understood to be at the connection from trunkline to branchline and will be clearly located in the field for balancing and maintenance personnel.
 - 4) Duct fabrication standards are to match or exceed the standards shown on the contract / conformed drawings.
 - 5) RCOD's and equipment are per approved / approved as noted submittals and are located as shown. Types and sizes are listed on the contract / conformed drawing set.



No.	Description	Date

**QUINNIPIAC
 UNIVERSITY
 CATHOLIC CENTER**

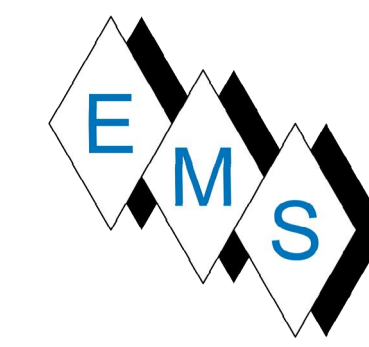
385 NEW ROAD
 HAMDEN, CT 06518

ATTIC 3D VIEW AS-BUILT

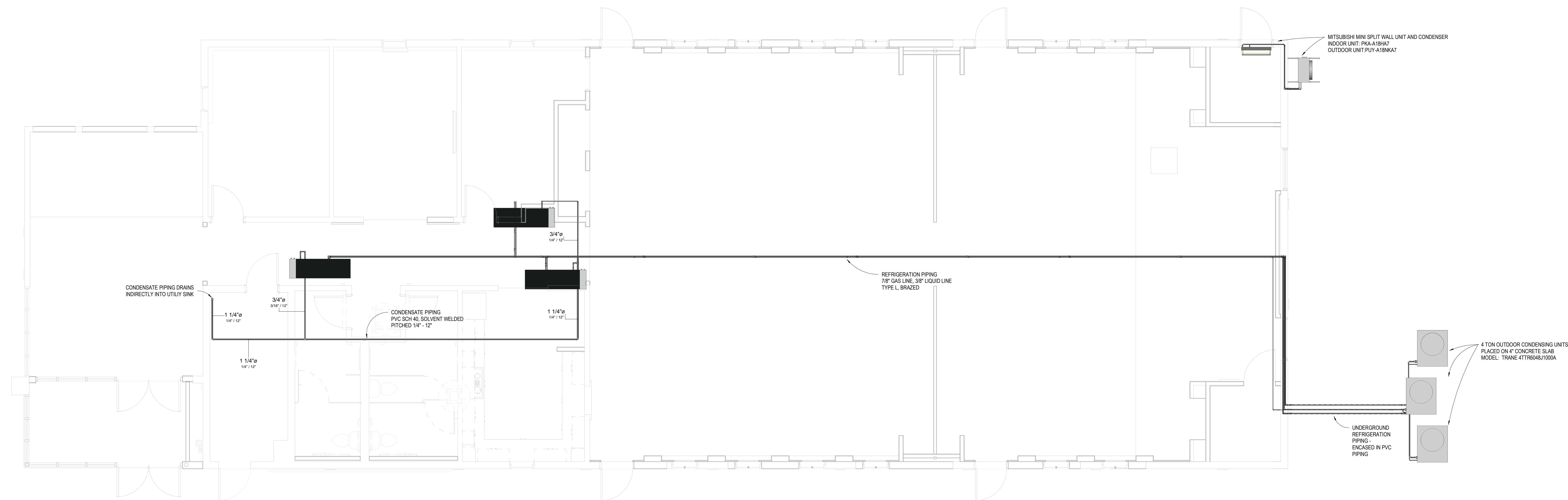
Project Number	4666
Date	6/10/17
Drawn By	T. Huizinga
Checked By	T. Huizinga

M-3

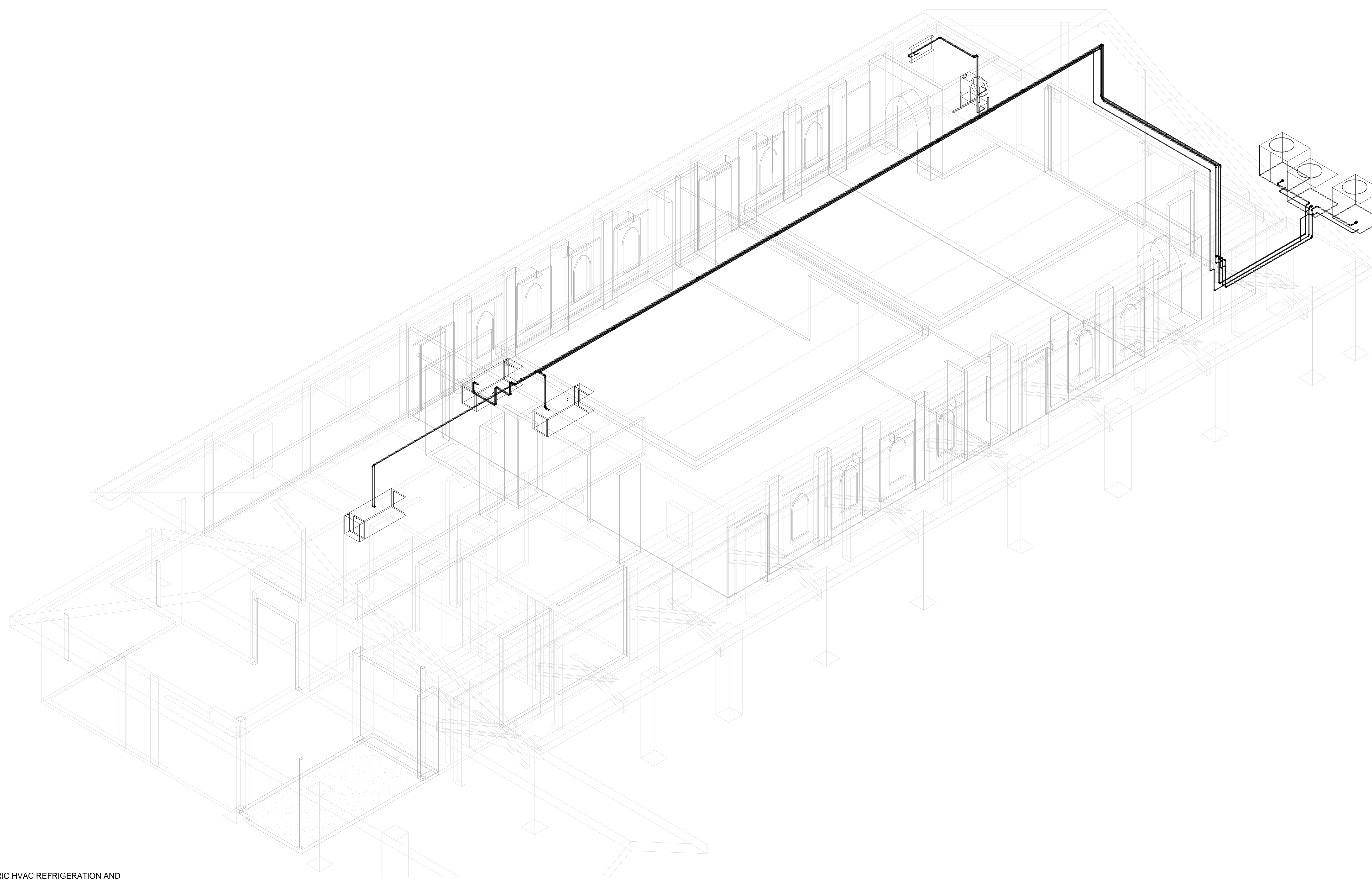
1 ATTIC 3D ARCHITECTURAL VIEW



EASTERN MECHANICAL SERVICES
 3 Starr Street, Danbury, CT 06810
 Ph. 203.792.7668 www.emsinc.us



HVAC REFRIGERATION AND
 CONDENSATE PIPING
 1/4" = 1'-0"



ISOMETRIC HVAC REFRIGERATION AND
 CONDENSATE PIPING

No.	Description	Date

**QUINNIPIAC
 UNIVERSITY
 CATHOLIC CENTER**

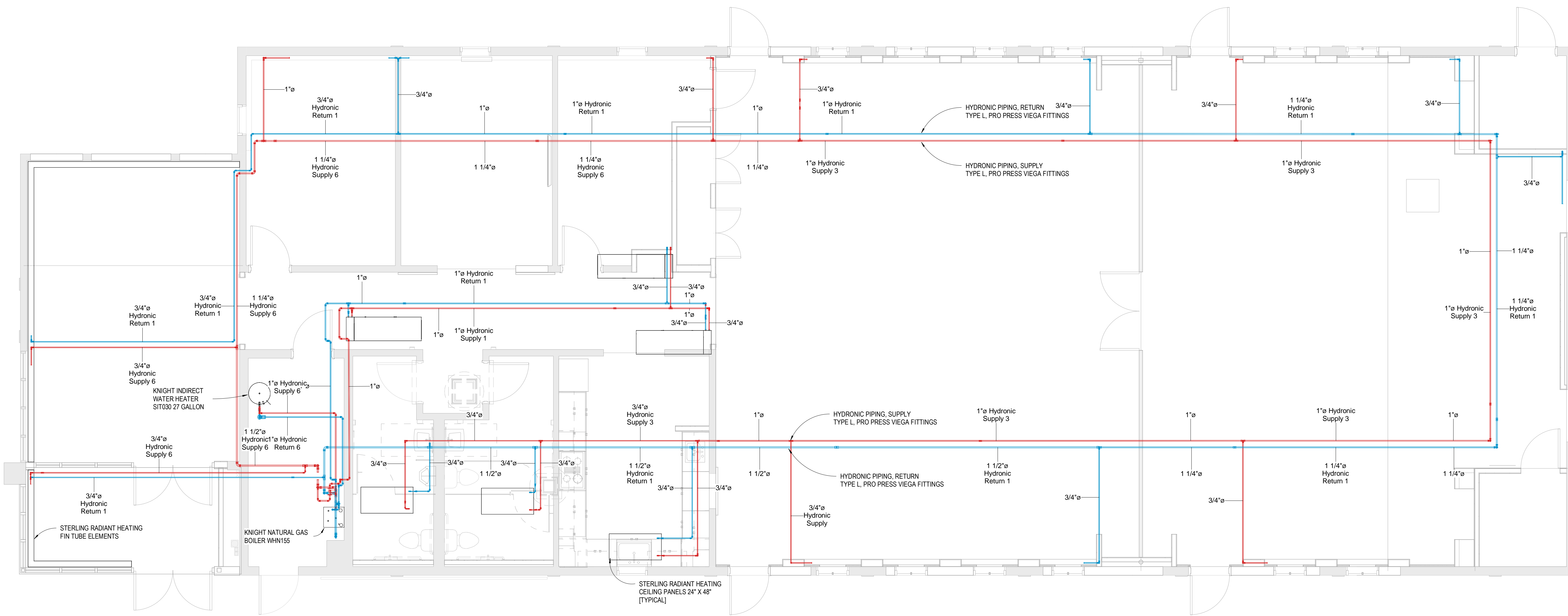
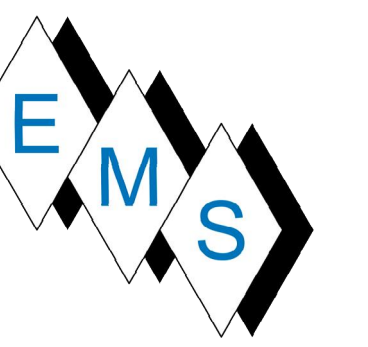
385 NEW ROAD
 HAMDEN, CT 06518

HVAC REFRIGERATION AND CONDENSATE AS-BUILT

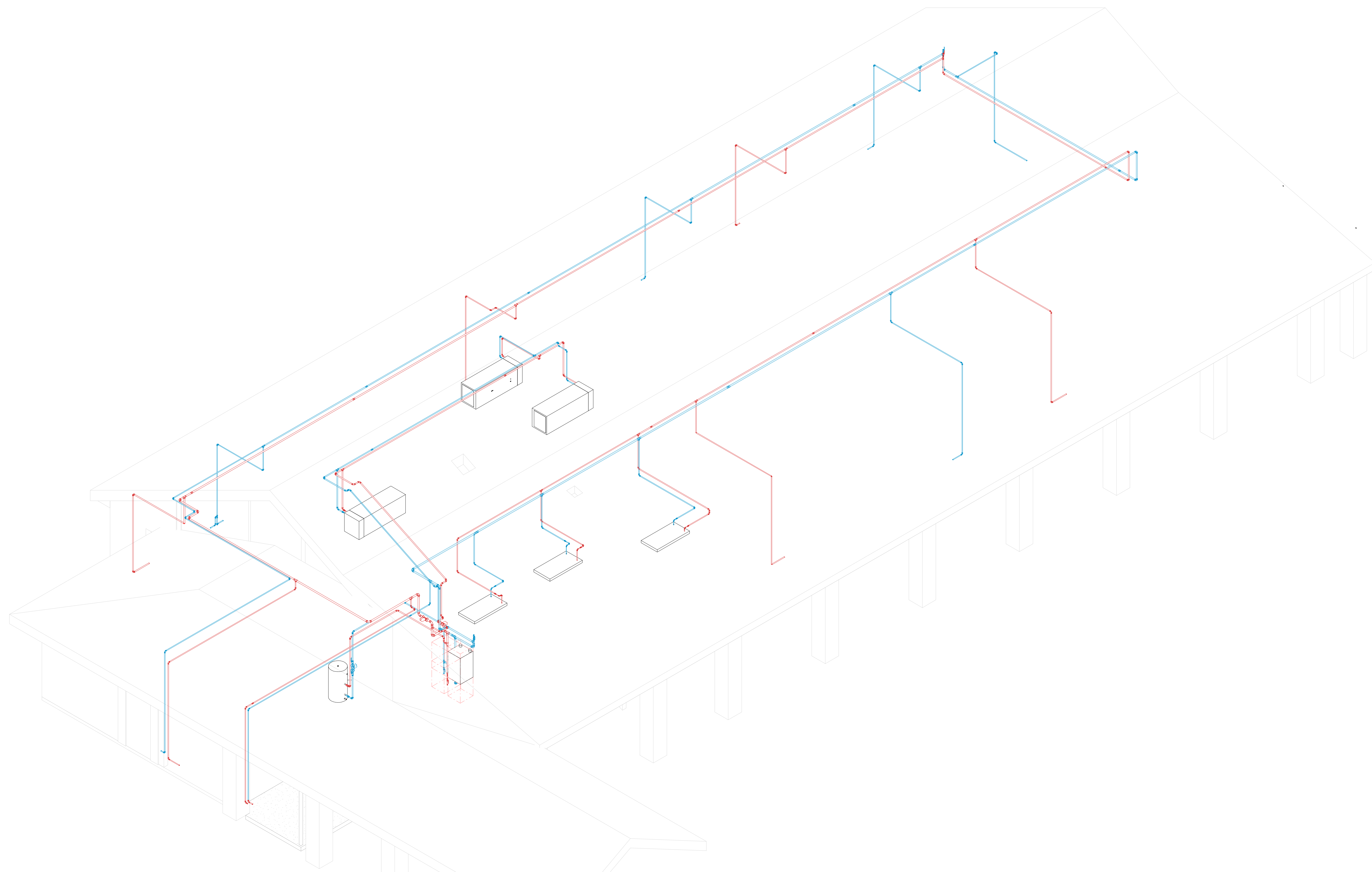
Project Number	4666
Date	6/10/17
Drawn By	T. Huizinga
Checked By	T. Huizinga

M-4

10/9/2017 10:08:01 AM



1 HVAC HYDRONIC PIPING
 1/4" = 1'-0"



2 ISOMETRIC HVAC HYDRONIC PIPING

No.	Description	Date

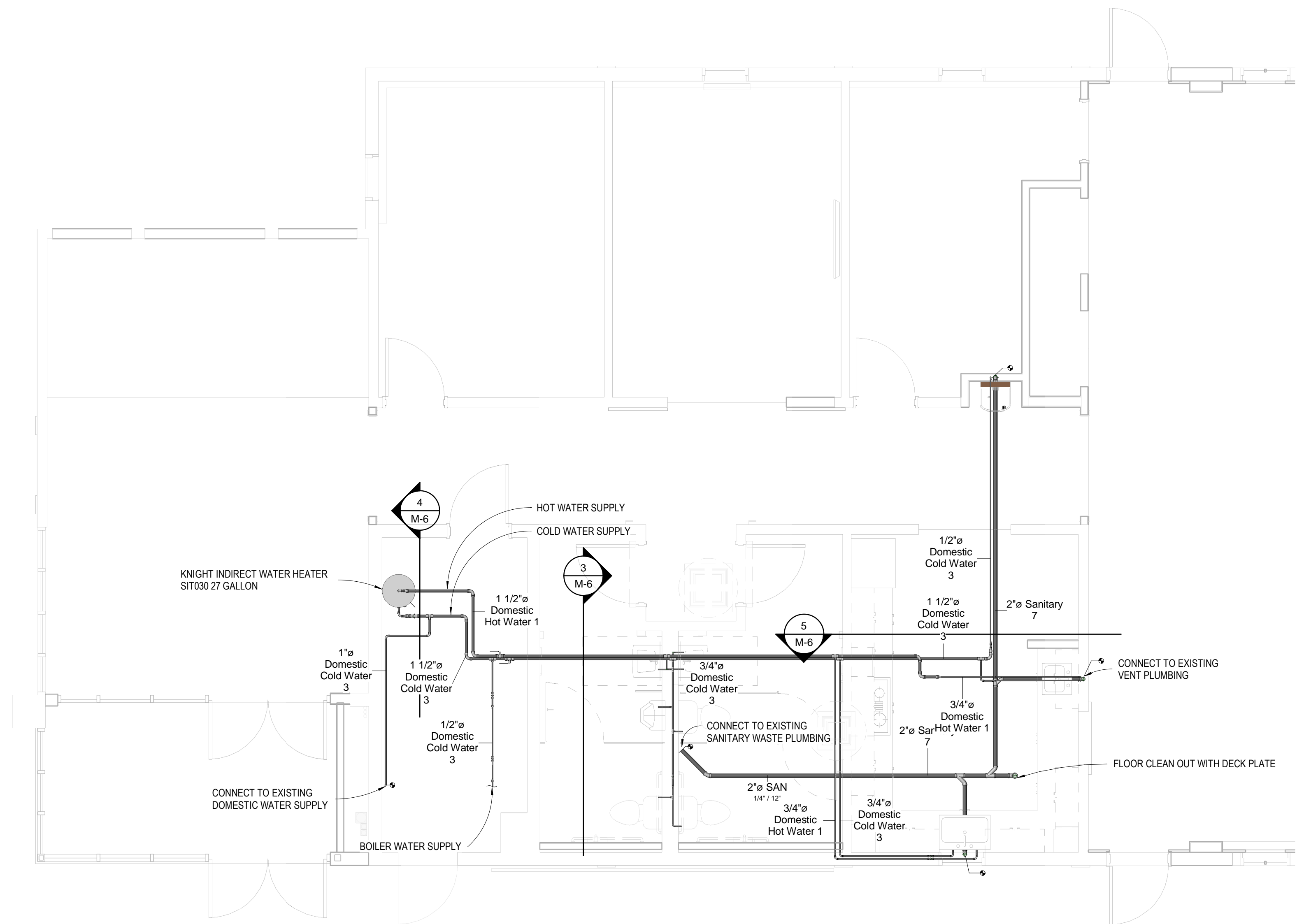
**QUINNIPIAC UNIVERSITY
 CATHOLIC CENTER**

385 NEW ROAD
 HAMDEN, CT 06518

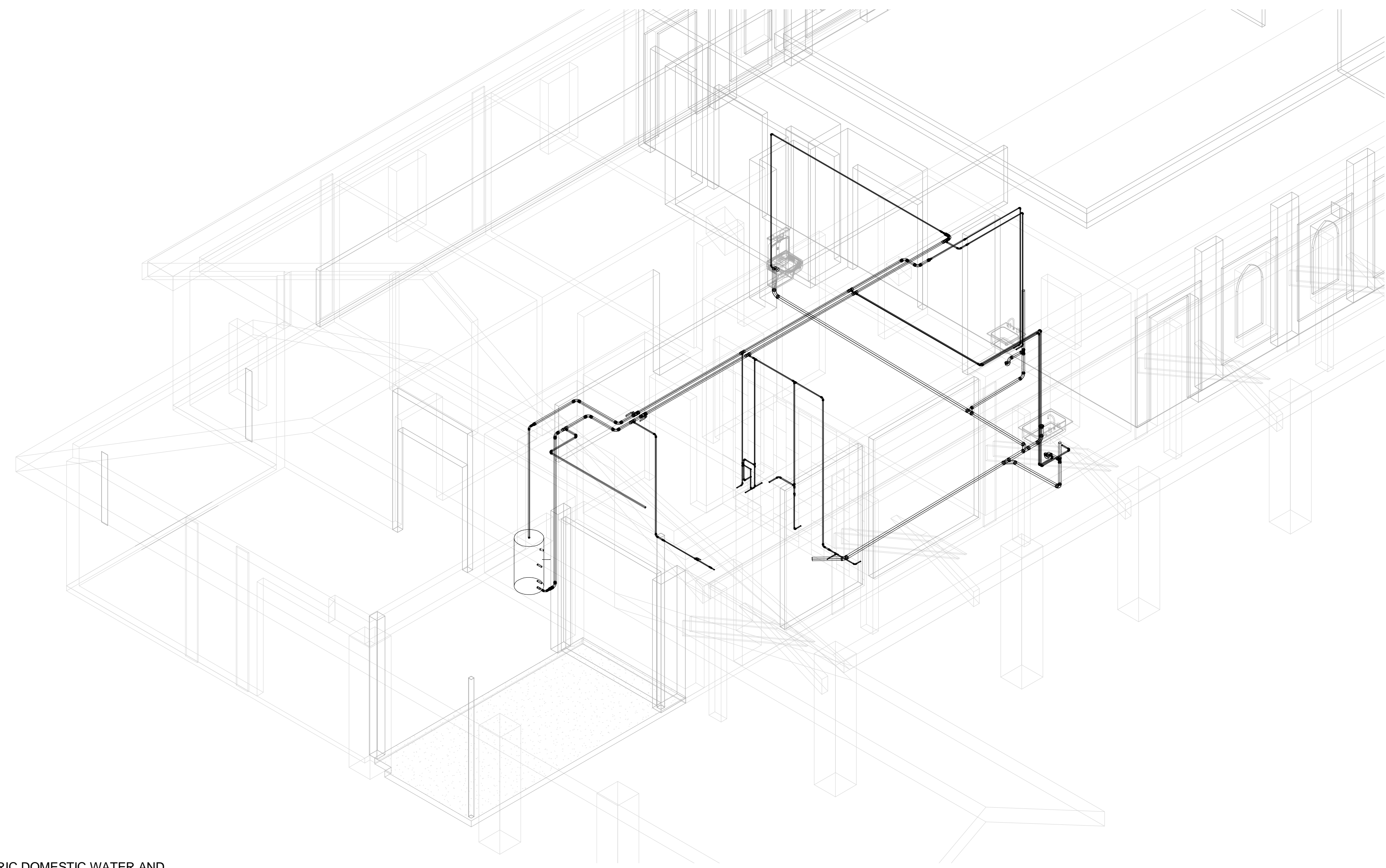
HVAC HYDRONIC PIPING AS-BUILT

Project Number	4666
Date	6/10/17
Drawn By	T. Huizinga
Checked By	T. Huizinga

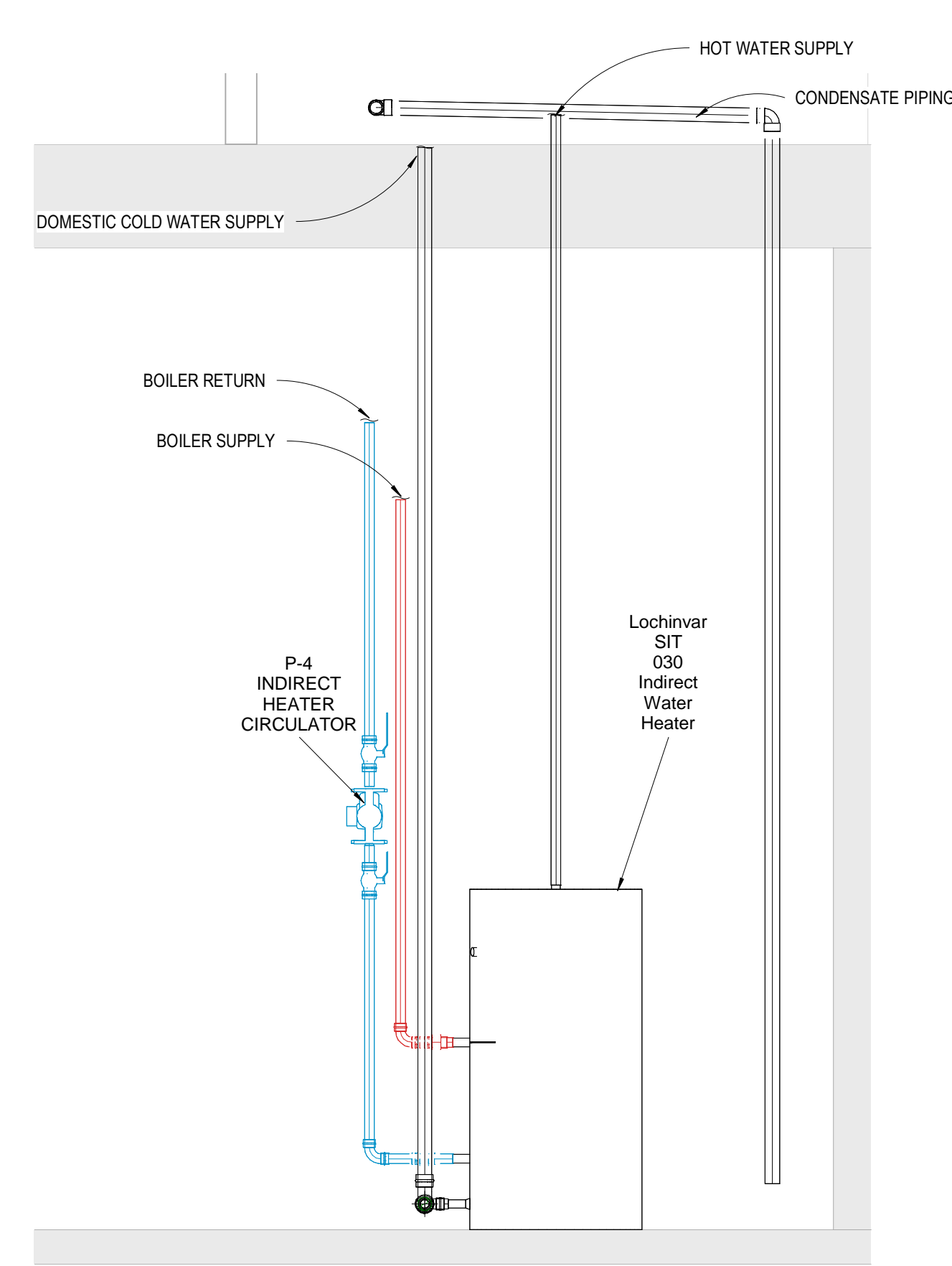
M-5



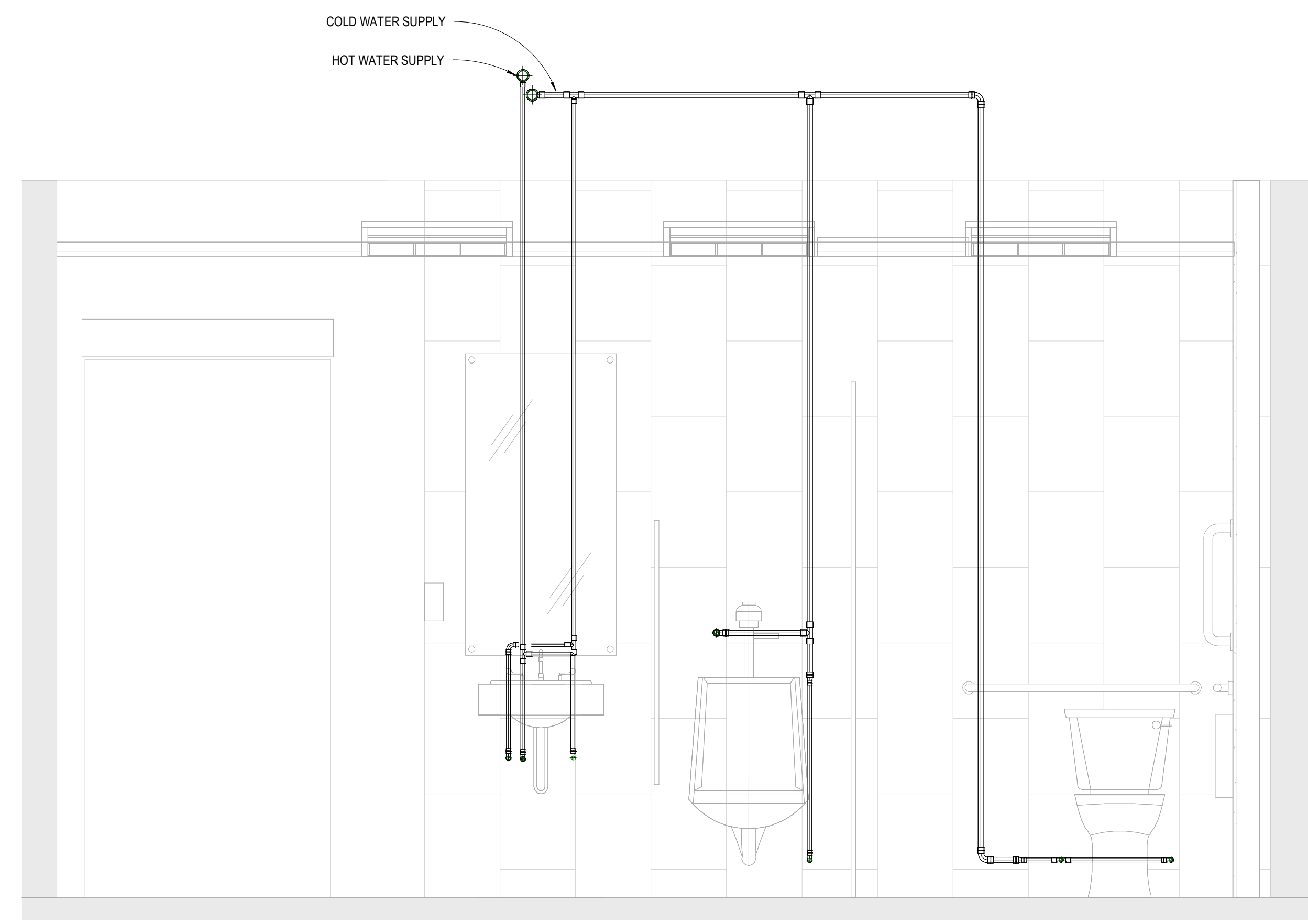
DOMESTIC WATER AND SANITARY WASTE PIPING
 1/4" = 1'-0"



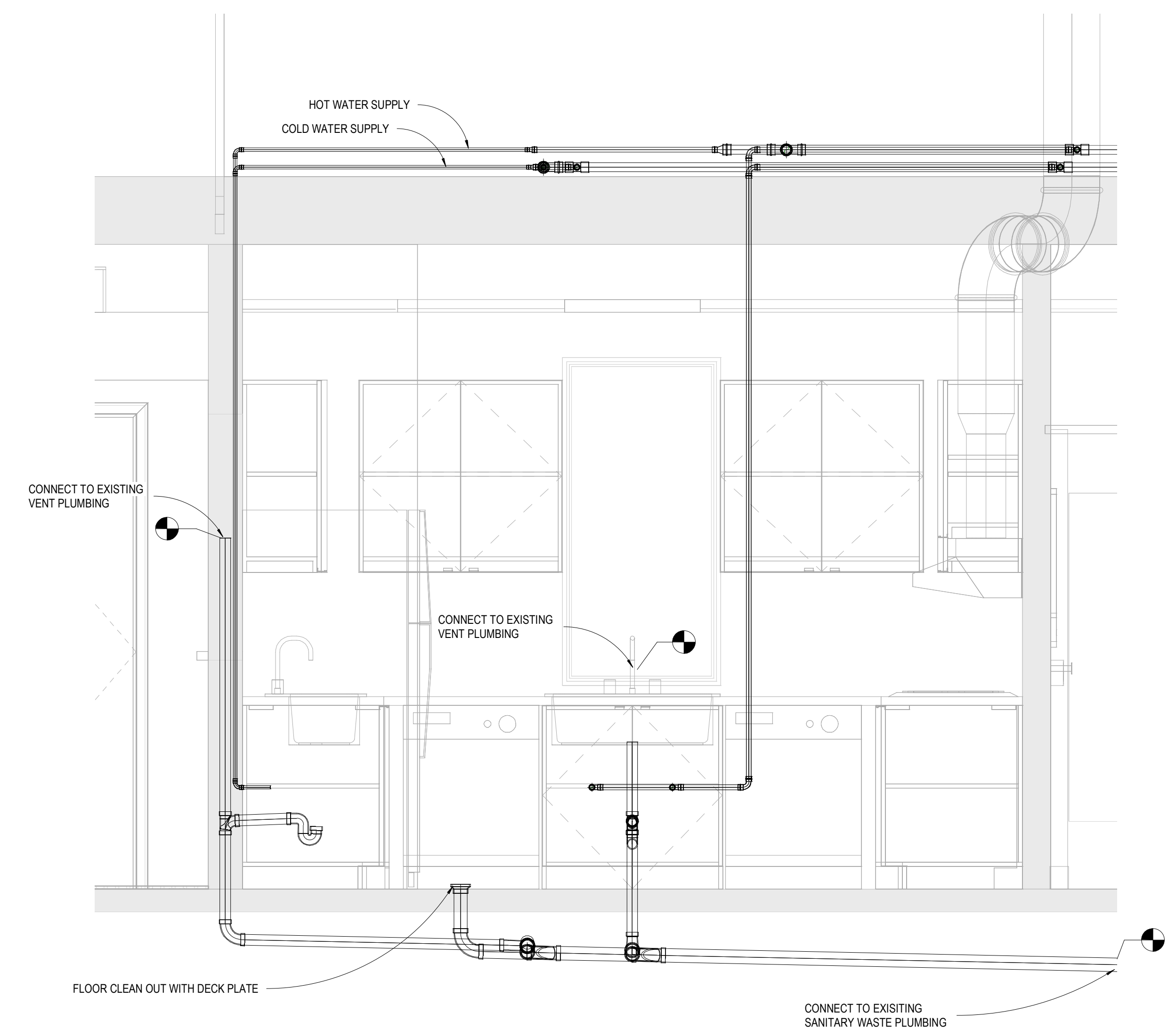
ISOMETRIC DOMESTIC WATER AND SANITARY WASTE PIPING
 2



INDIRECT WATER HEATER ELEVATION
 3/4" = 1'-0"



BATHROOM PLUMBING ELEVATION
 3/4" = 1'-0"



KITCHEN PLUMBING ELEVATION
 3/4" = 1'-0"

No.	Description	Date

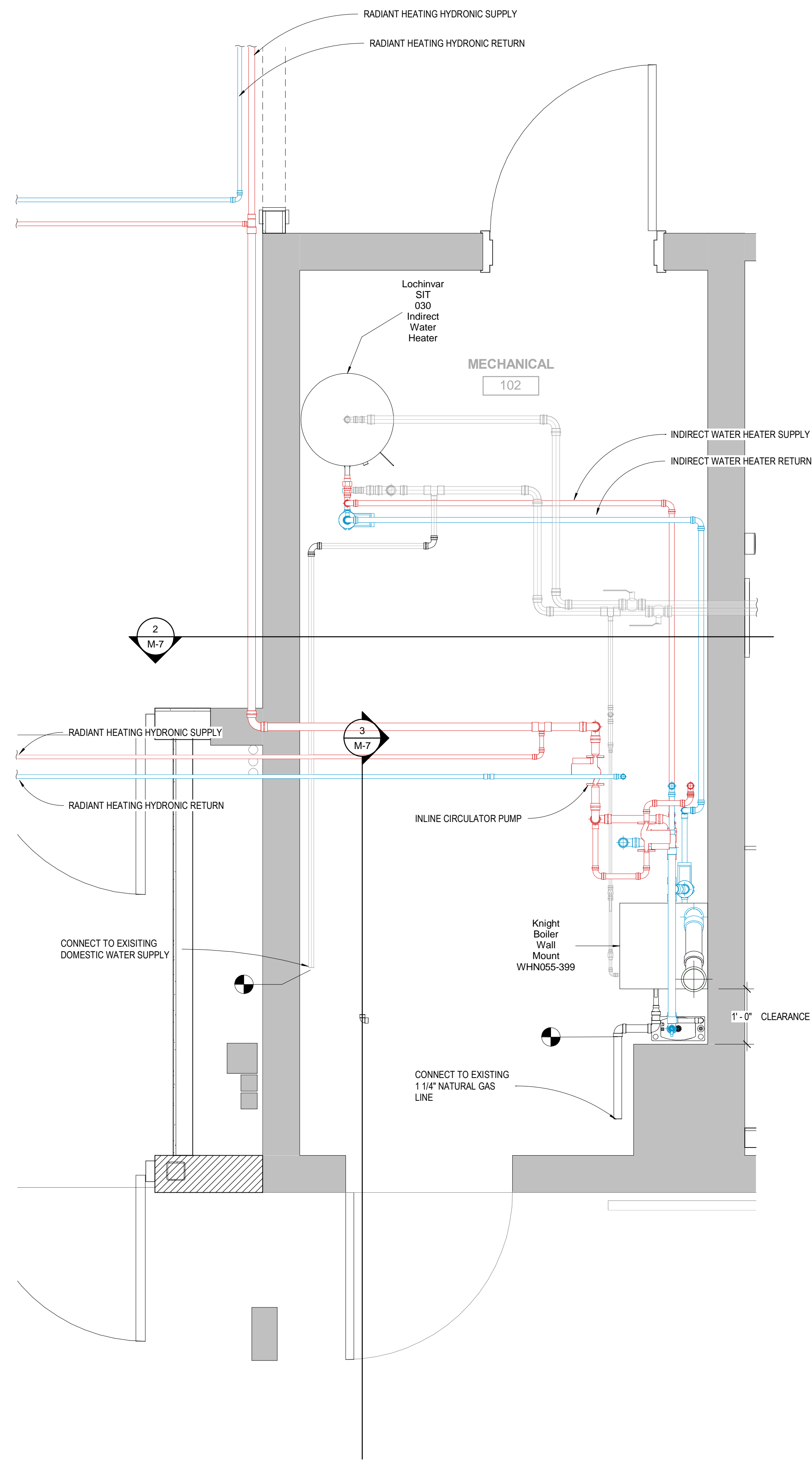
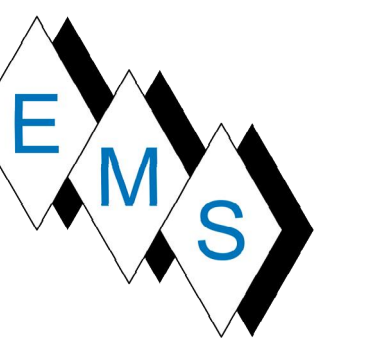
**QUINNIPIAC UNIVERSITY
 CATHOLIC CENTER**

385 NEW ROAD
 HAMDEN, CT 06518

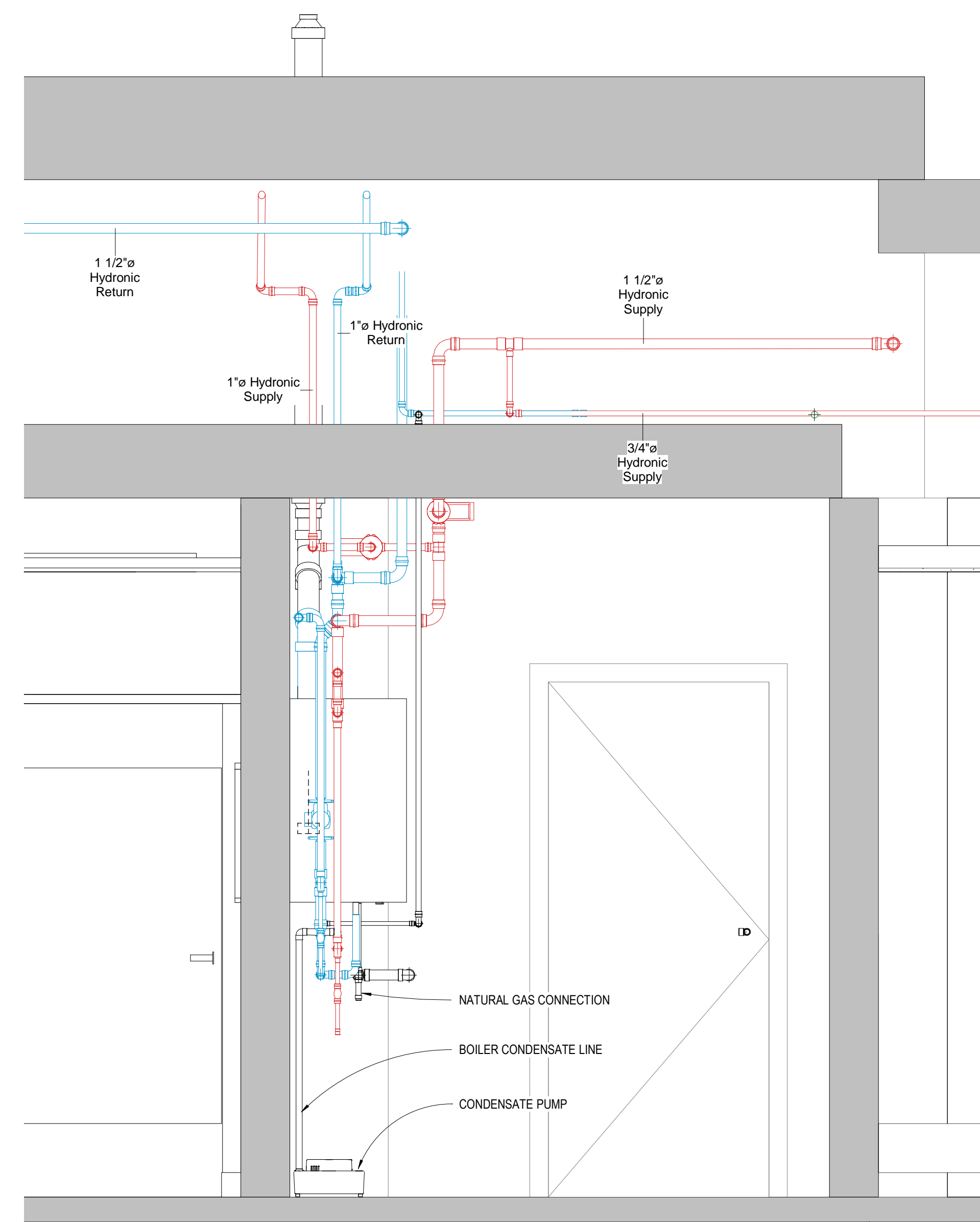
DOMESTIC WATER AND WASTE PIPING AS-BUILT

Project Number	4666
Date	6/10/17
Drawn By	T. Huizinga
Checked By	T. Huizinga

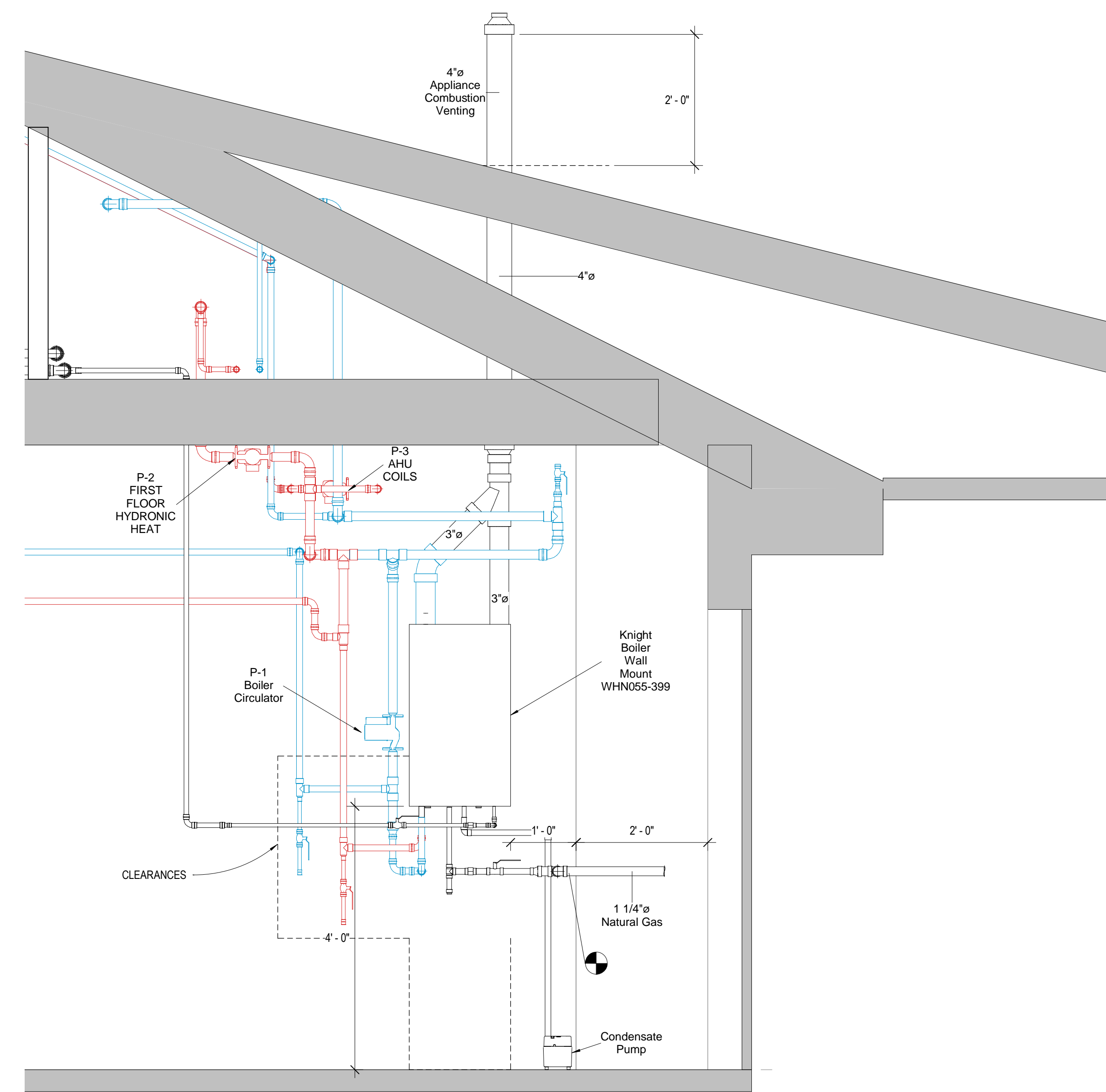
M-6



1 WET HEAT FIRST FLOOR PLAN
 3/4" = 1'-0"



2 WET HEAT SIDE ELEVATION
 3/4" = 1'-0"



3 WET HEAT FRONT ELEVATION
 3/4" = 1'-0"

No.	Description	Date

**QUINNIPIAC UNIVERSITY
 CATHOLIC CENTER**

385 NEW ROAD
 HAMDEN, CT 06518

BOILER PLAN & DETAILS AS-BUILT

Project Number	4666
Date	6/10/17
Drawn By	T. Huizinga
Checked By	T. Huizinga

M-7