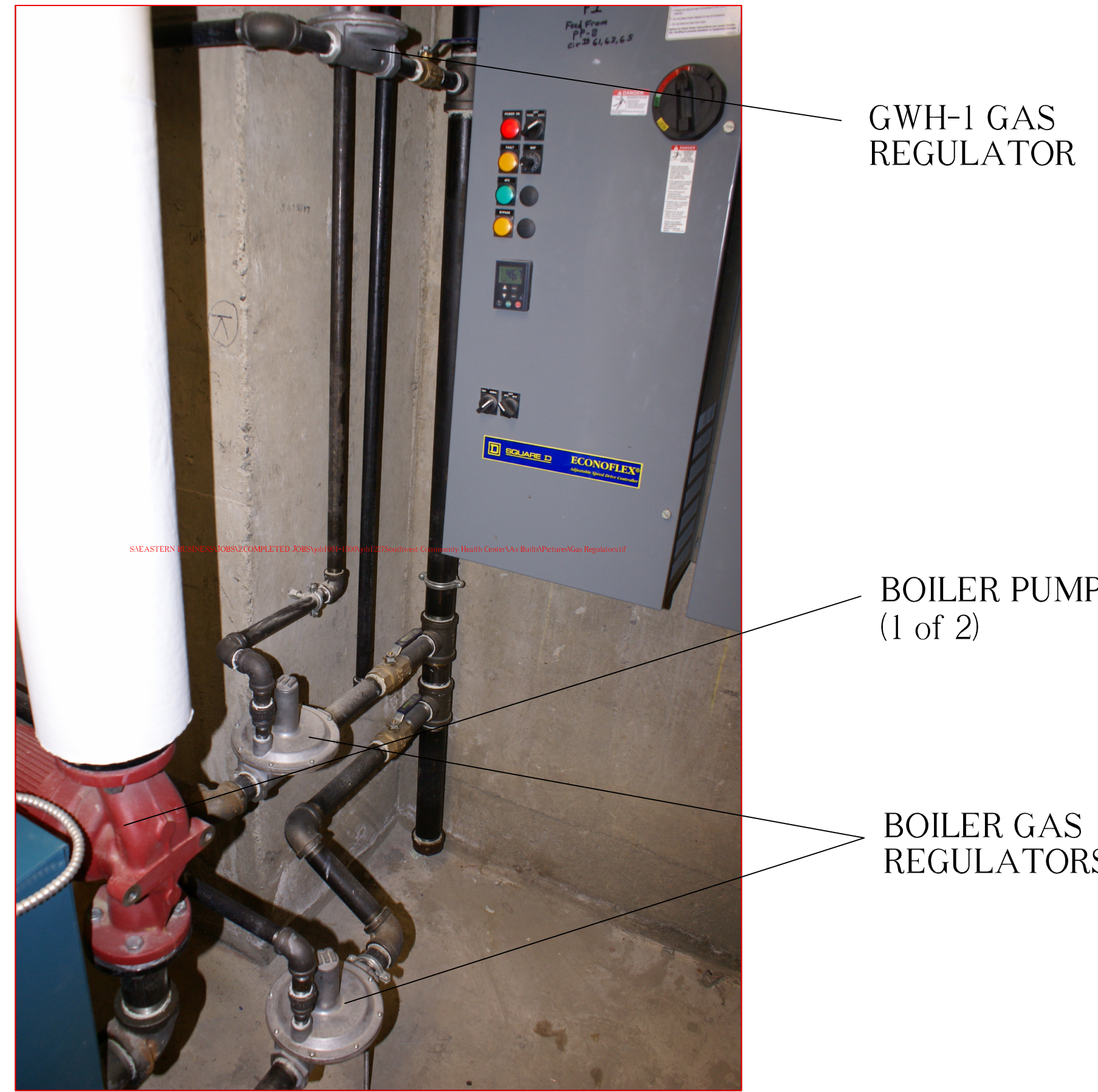


COORDINATION SIGN OFF

REP.	COMPANY	DATE
	Perkins Eastman Architects	
	W&M Construction	

SHEET NOTES



GWH-1 GAS REGULATOR

BOILER PUMP (1 of 2)

BOILER GAS REGULATORS



DENTAL VACUUM PUMP

DENTAL AIR COMPRESSOR

DENTAL MER



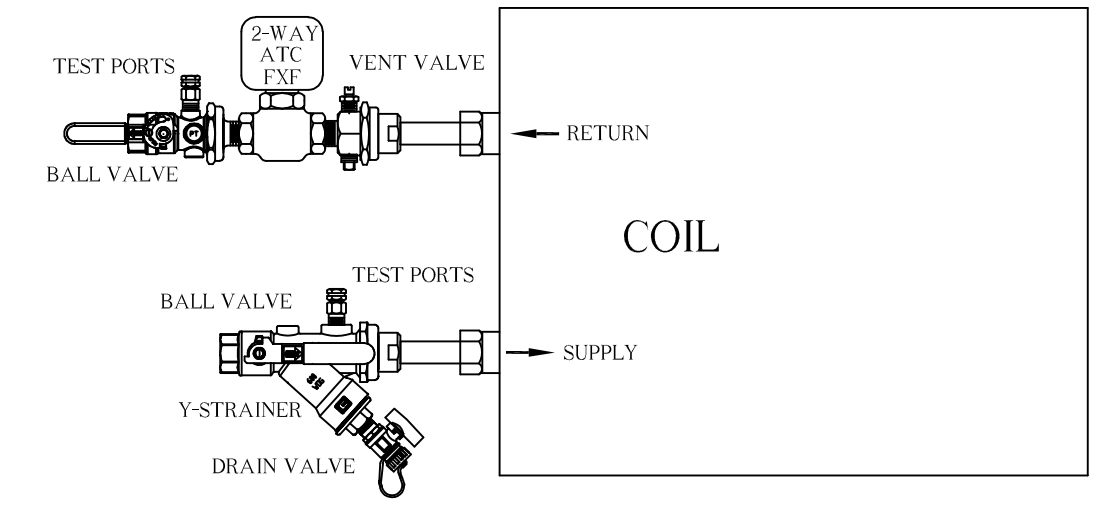
H-9

H-7

H-10

H-8

HWP-1 & 2



TYPICAL GRISWOLD HOSE KIT CONNECTION TO HEATING COIL

HEATING VALVE TAG	SIZE	TYPE	LOCATION	SERVES
H-1	2"	Ball valve	Lab room 1207	Hot water return first floor south side
H-2	2"	Ball valve	Lab room 1207	Hot water supply first floor south side
H-3	2"	Ball valve	Lab room 1207	Hot water return first floor north side
H-4	2"	Ball valve	Lab room 1207	Hot water supply first floor north side
H-5	2"	Ball valve	Second floor mechanical electrical room	Hot water return second floor
H-6	2"	Ball valve	Second floor mechanical electrical room	Hot water supply second floor
H-7	2 1/2"	Butterfly	Boiler room	Hot water supply upstream of pump P-1
H-8	2 1/2"	Butterfly	Boiler room	Hot water supply upstream of pump P-2
H-9	2 1/2"	Triple duty	Boiler room	Hot water supply downstream of pump P-1
H-10	2 1/2"	Triple duty	Boiler room	Hot water supply downstream of pump P-2
H-11	3"	Butterfly	Boiler room	Hot water return first and second floor
H-12	1 1/4"	Ball valve	Boiler room	Hot water supply for basement
H-13	2"	Ball valve	Boiler room	Hot water supply for boiler #1
H-14	2"	Ball valve	Boiler room	Hot water return for boiler #1
H-15	2"	Ball valve	Boiler room	Hot water supply for boiler #2
H-16	2"	Ball valve	Boiler room	Hot water return for boiler #2
H-17	1 1/4"	Ball valve	Boiler room	Hot water return for basement



H-13

H-14

H-15

H-16

HWRP-1

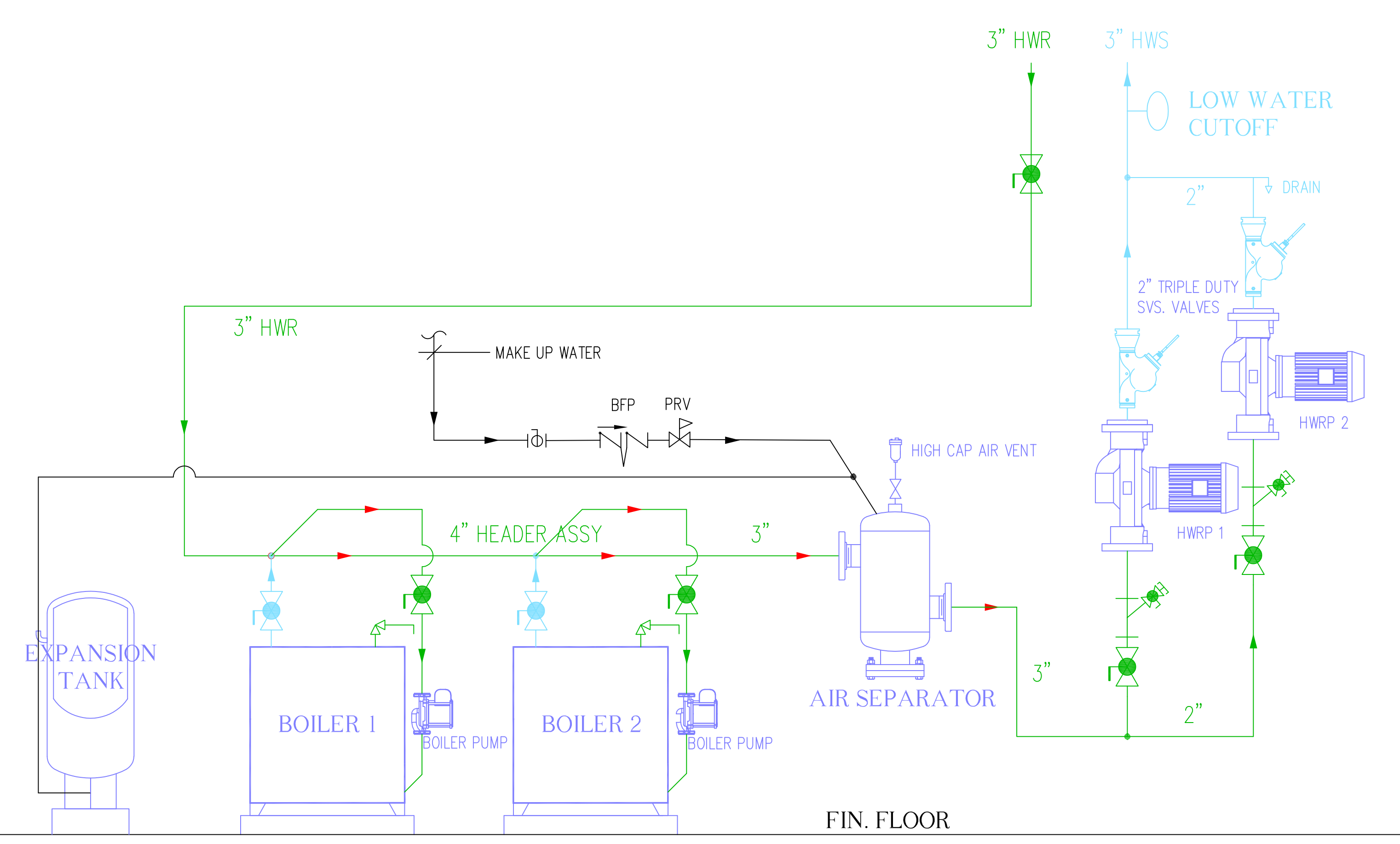
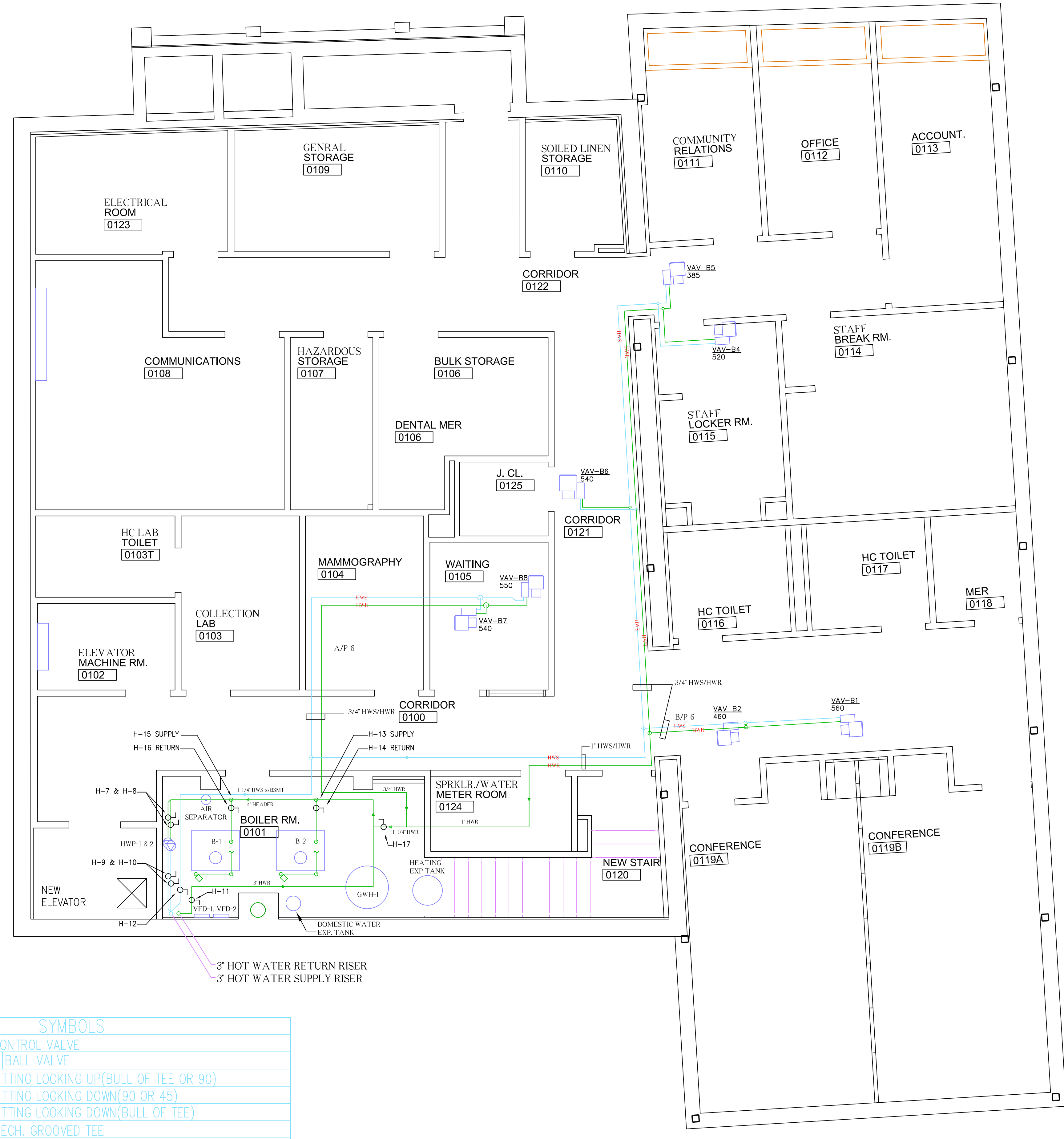
GWH-1

DOMESTIC WATER EXP TANK

LOW WATER CUT-OFF

VFD-1 & 2

BOILERS-1 & 2



BOILER ROOM PIPING DETAILS

[Symbol]	CONTROL VALVE
[Symbol]	BALL VALVE
[Symbol]	FITTING LOOKING UP (BULL OF TEE OR 90)
[Symbol]	FITTING LOOKING DOWN (90 OR 45)
[Symbol]	FITTING LOOKING DOWN (BULL OF TEE)
[Symbol]	MECH. GROOVED TEE
[Symbol]	STRAINER WITH BLOW DOWN VALVE & CAP
[Symbol]	BACK FLOW PREVENTER
[Symbol]	PRESSURE REDUCING VALVE
[Symbol]	BALANCING VALVE
[Symbol]	BALL VALVE DRAIN W/ HOSE CONNECTION AND CAP
[Symbol]	RELIEF VALVE

NO.	REVISION	DATE

DWG. TITLE
BASMENT HYDRONICS [As Built]

PROJECT
**SOUTHWEST COMMUNITY HEALTH CENTER INC.
968 FAIRFIELD AVE
BRIDGEPORT, CONNECTICUT 06605**



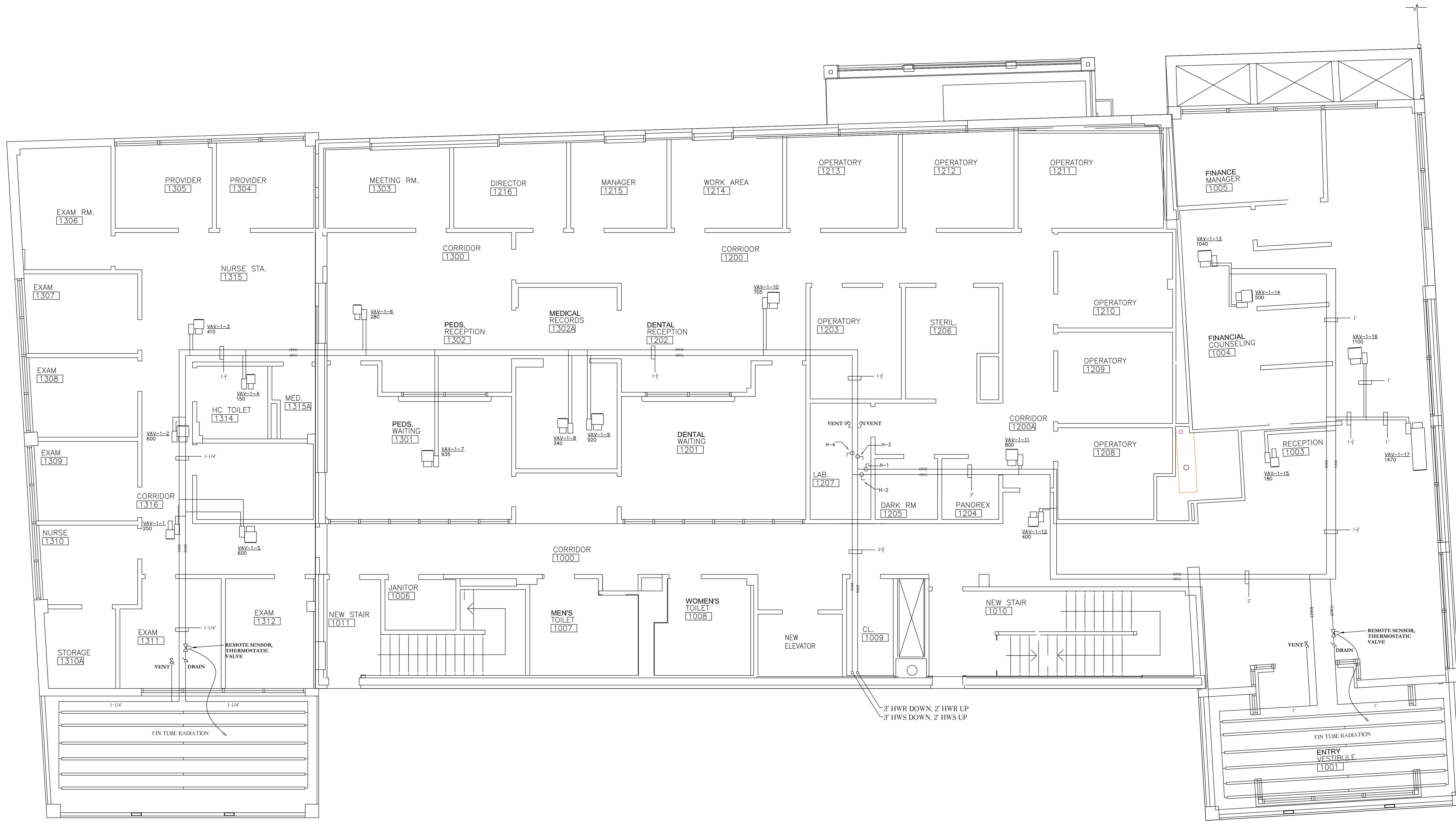
EASTERN MECHANICAL SERVICES, INC
64 TRIANGLE STREET SUITE H2
PO BOX 246
DANBURY, CT 06810

DES. BY	DWN. BY	DATE	DWG. NO.
JH	CAD	3/16/07	M-1
EMS JOB NO.	CHECKED BY	SCALE	
1227		1/4"=1'-0"	

COORDINATION SIGN OFF

REP.	COMPANY	DATE
	Perkins Eastman Architects	
	W&M Construction	
	SYSKA HENNESSY	

SHEET NOTES:



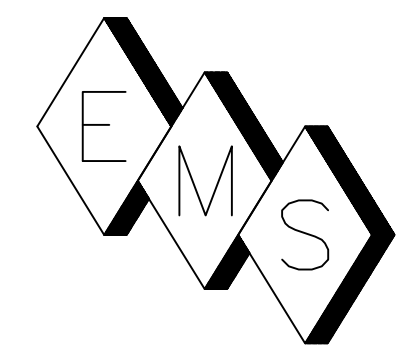
NOTES:

- SEE DRAWING M-1 FOR BOILER ROOM, DENTAL MER DETAILS AND VALVE TAC SCHEDULE.

NO.	REVISION	DATE

DWG. TITLE
FIRST FLOOR HYDRONICS
[As Built]

PROJECT
SOUTHWEST COMMUNITY HEALTH
CENTER INC.
968 FAIRFIELD AVE
BRIDGEPORT, CONNECTICUT 06605



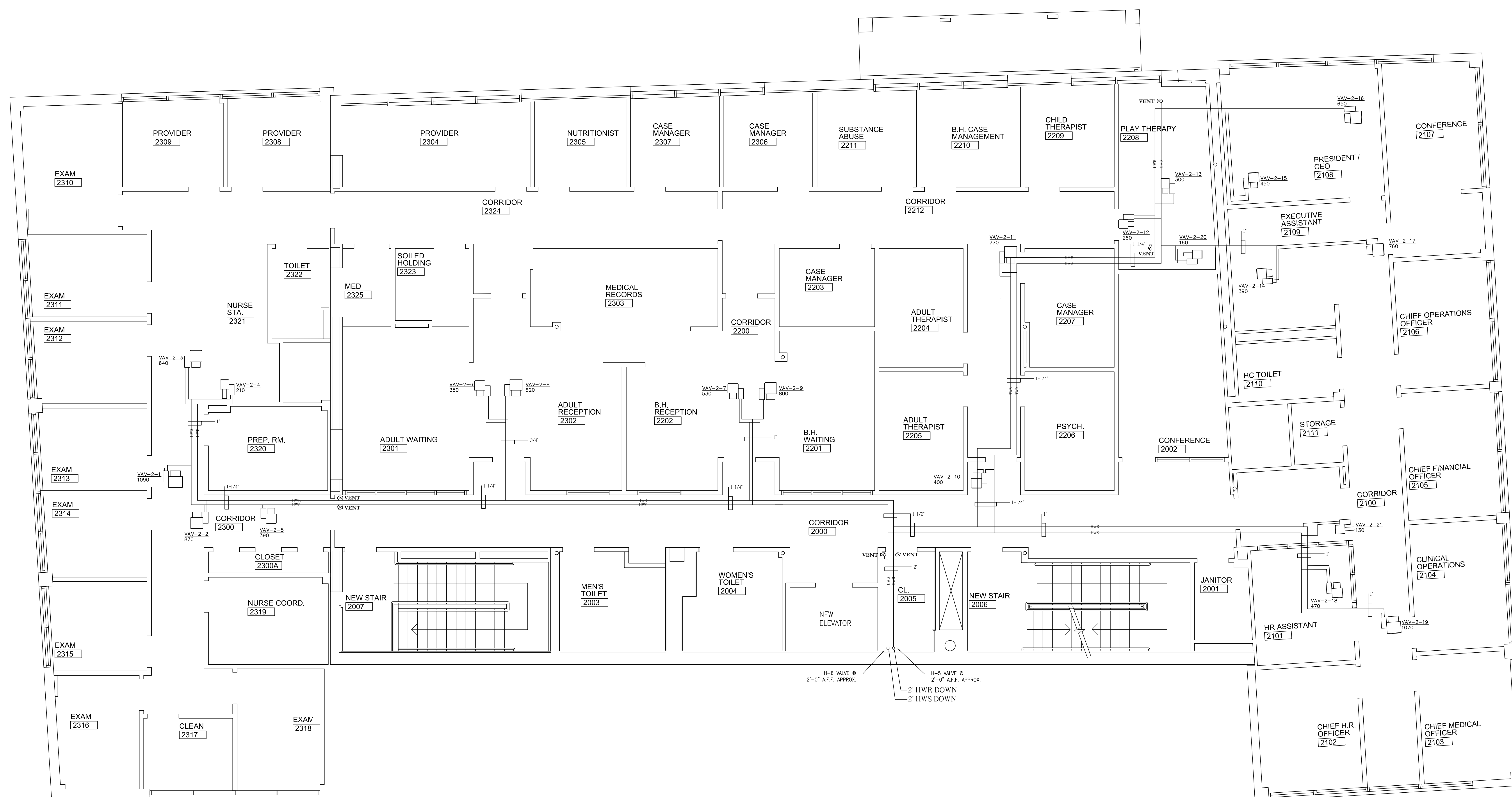
EASTERN MECHANICAL SERVICES, INC
64 TRIANGLE STREET SUITE H2
PO BOX 246
DANBURY, CT 06810

DES. BY	DWN. BY	DATE	DWG. NO.
JH	CAD	3/16/07	M-2
EMS JOB NO.	CHECKED BY	SCALE	
1227		1/4"=1'-0"	

COORDINATION SIGN OFF

REP.	COMPANY	DATE
	Perkins Eastman Architects	
	W&M Construction	

SHEET NOTES:

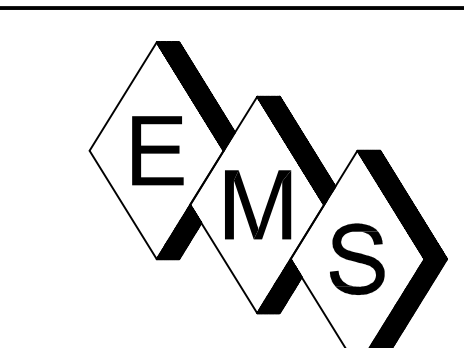


NOTES:
 1. SEE DRAWING M-1 FOR BOILER ROOM, DENTAL MER DETAILS AND VALVE TAG SCHEDULE.

NO.	REVISION	DATE

DWG. TITLE
 SECOND FLOOR HYDRONICS
 [As Built]

PROJECT
 SOUTHWEST COMMUNITY HEALTH
 CENTER INC.
 968 FAIRFIELD AVE
 BRIDGEPORT, CONNECTICUT 06605

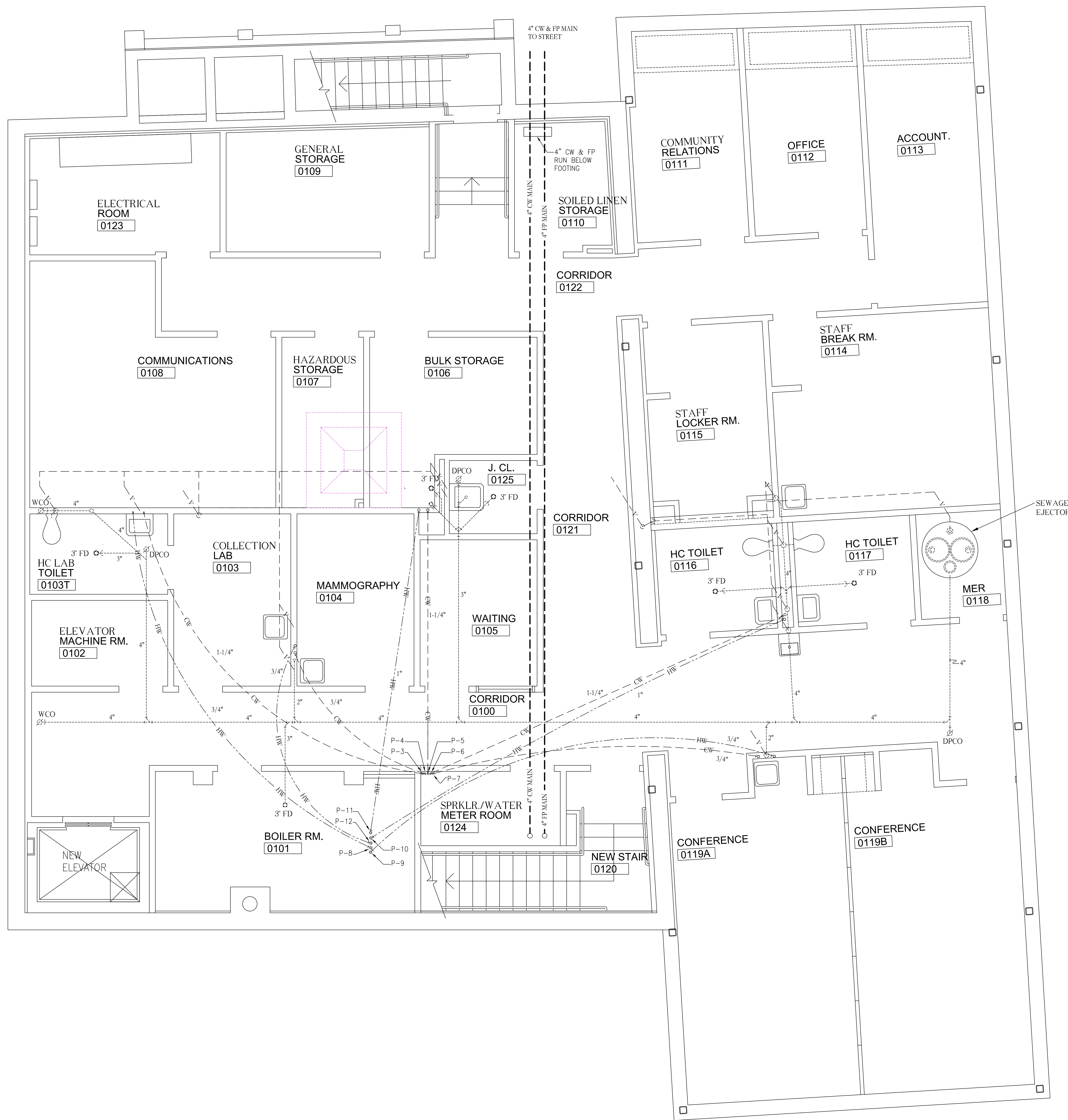


EASTERN MECHANICAL SERVICES, INC
 64 TRIANGLE STREET SUITE H2
 PO BOX 246
 DANBURY, CT 06810

DES. BY	DWN. BY	DATE	DWG. NO.
JH	CAD	3/16/07	M-3
EMS JOB NO.	CHECKED BY	SCALE	
1227		1/4"=1'-0"	

PLUMBING VALVE TAG CHART

PLUMBING VALVE TAG	SIZE	TYPE	LOCATION	SERVES
P-1	3"	Butterfly	Sprinkler Room	Main domestic water
P-2	3"	Butterfly	Sprinkler Room	Main domestic water
P-3	1 1/4"	Ball Valve	Sprinkler Room	Cold to single restroom
P-4	3/4"	Ball Valve	Sprinkler Room	Cold to managrum room
P-5	1 1/4"	Ball Valve	Sprinkler Room	Cold to janitors closet
P-6	1 1/4"	Ball Valve	Sprinkler Room	Cold to back to back restrooms
P-7	1/2"	Ball Valve	Sprinkler Room	Cold to conference room
P-8	1/2"	Ball Valve	Sprinkler Room	Hot to single restroom
P-9	1/2"	Ball Valve	Sprinkler Room	Hot to conference room
P-10	1"	Ball Valve	Sprinkler Room	Hot to back to back restrooms
P-11	1"	Ball Valve	Boiler Room	Hot to janitors closet
P-12	3/4"	Ball Valve	Boiler Room	Hot to managrum room
P-13	3/4"	Ball Valve	Boiler Room	Main cold water to hot water heater
P-14	1/2"	Ball Valve	Boiler Room	Trap primer
P-15	1 1/2"	Ball Valve	Boiler Room	Main hot water valve
P-16	1/2"	Ball Valve	Single restroom in wall	Trap primer
P-17	1/2"	Ball Valve	Back to back restroom in wall	Trap primer
P-18	1/2"	Ball Valve	Storage room	Trap primer
P-19	1"	Ball Valve	Boiler Room	Hot water recirculating pump
P-20	2"	Ball Valve	Boiler Room	Main cold water boilers and hot water heater
P-21	1 1/2"	Ball Valve	First floor mechanical closet 1009	Hot water shut off for the first floor
P-22	3/4"	Ball Valve	First floor mechanical closet 1009	Recirculating hot water
P-23	1/2"	Ball Valve	First floor ladies room 1008	Cold water for Ladies room 1008
P-24	1/2"	Ball Valve	First floor ladies room 1008	Hot water for the Ladies room 1008
P-25			Tag not used	
P-26	1/2"	Ball Valve	First floor mens room 1007	Trap primer for floor drain in 1007
P-27	2"	Ball Valve	First floor Ladies room 1008 in wall	Main cold water for first and second floor bathrooms
P-28	1/2"	Ball Valve	Hallway between men's and janitor's closet	Hot water for janitor's mop basin
P-29	1/2"	Ball Valve	Hallway between men's and janitor's closet	Cold water for janitor's mop basin
P-30	1/2"	Ball Valve	North hallway between rooms 1311 and 1312	Hot water for prep room 2320
P-31	1/2"	Ball Valve	North hallway between rooms 1311 and 1312	Hot water for prep room 1313
P-32	1/2"	Ball Valve	North hallway between rooms 1311 and 1312	Cold water for prep room 2320
P-33	1/2"	Ball Valve	North hallway between rooms 1311 and 1312	Cold water for prep room 1313
P-34	3/4"	Ball Valve	North hallway between rooms 1311 and 1312	Hot water for exam rooms 1311 and 1312
P-35	3/4"	Ball Valve	North hallway between rooms 1311 and 1312	Cold water for exam rooms 1311 and 1312
P-36	1/2"	Ball Valve	Prep room 1313	Trap primer for floor drain in 1313
P-37	3/4"	Ball Valve	Exam room 1309	Cold water for exam rooms 1308 and 1309
PLUMBING VALVE TAG	SIZE	TYPE	LOCATION	SERVES
P-38	3/4"	Ball Valve	Exam room 1308	Hot water for exam rooms 1308 and 1309
P-39	3/4"	Ball Valve	North hallway between rooms 1308 and 1309	Cold water for exam rooms 2312 and 2313
P-40	3/4"	Ball Valve	North hallway between rooms 1308 and 1309	Hot water for exam rooms 2312 and 2313
P-41	3/4"	Ball Valve	Exam room 1311	Hot water for exam rooms 2314 and 2315
P-42	3/4"	Ball Valve	Exam room 1311	Cold water for exam rooms 2314 and 2315
P-43	2"	Ball Valve	North hallway in front of exam room 1308	Cold water for rooms 2320, 2322, 2323
P-44	1"	Ball Valve	North hallway in front of exam room 1308	Hot water for rooms 2320, 2322, 2323
P-45	1/2"	Ball Valve	North hallway in front of exam room 1306	Hot water for exam room 2311
P-46	1/2"	Ball Valve	North hallway in front of exam room 1306	Cold water for exam room 2311
P-47	1/2"	Ball Valve	North hallway in front of exam room 1306	Hot water for exam room 1307
P-48	1/2"	Ball Valve	North hallway in front of exam room 1306	Cold water for exam room 1307
P-49	1/2"	Ball Valve	Exam room 1306	Cold water for exam room 2310
P-50	1/2"	Ball Valve	Exam room 1306	Hot water for exam room 2310
P-51	1/2"	Ball Valve	Exam room 1306	Cold water for exam room 1306
P-52	1/2"	Ball Valve	Exam room 1306	Hot water for exam room 1306
P-53	1 1/4"	Ball Valve	Handicapped bathroom 1314	Cold water for bathroom 1314
P-54	1/2"	Ball Valve	Handicapped bathroom 1314	Hot water for bathroom 1314
P-55	3/4"	Ball Valve	Lab room 1207	Hot water for lab room 1207 and room 1204



COORDINATION SIGN OFF

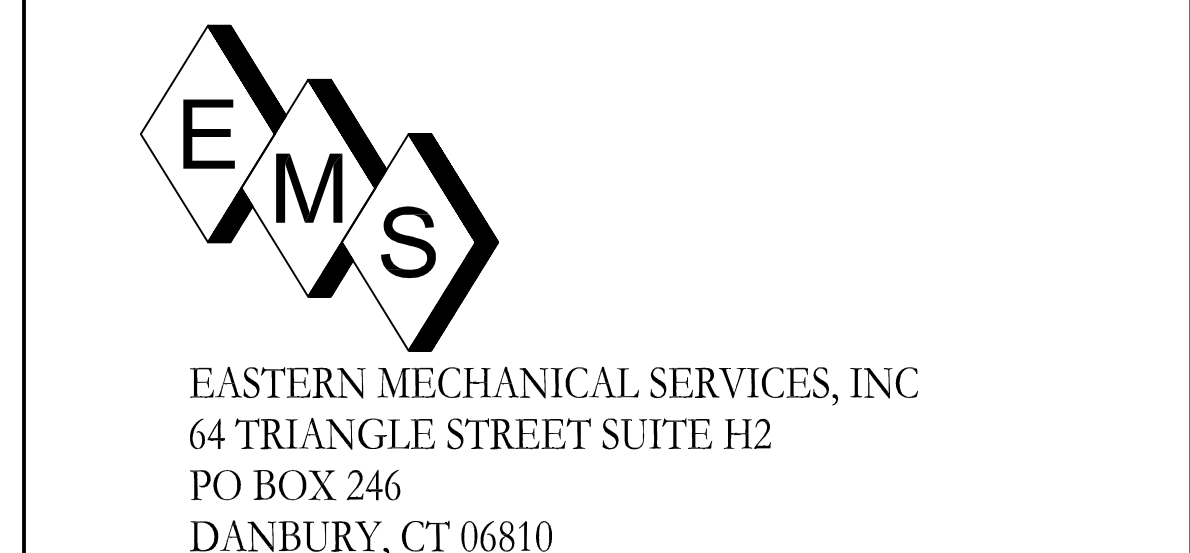
REP.	COMPANY	DATE
	Perkins Eastman Architects	
	W&M Construction	

1	SEWER EJECTOR RELO.	8-31-06
---	---------------------	---------

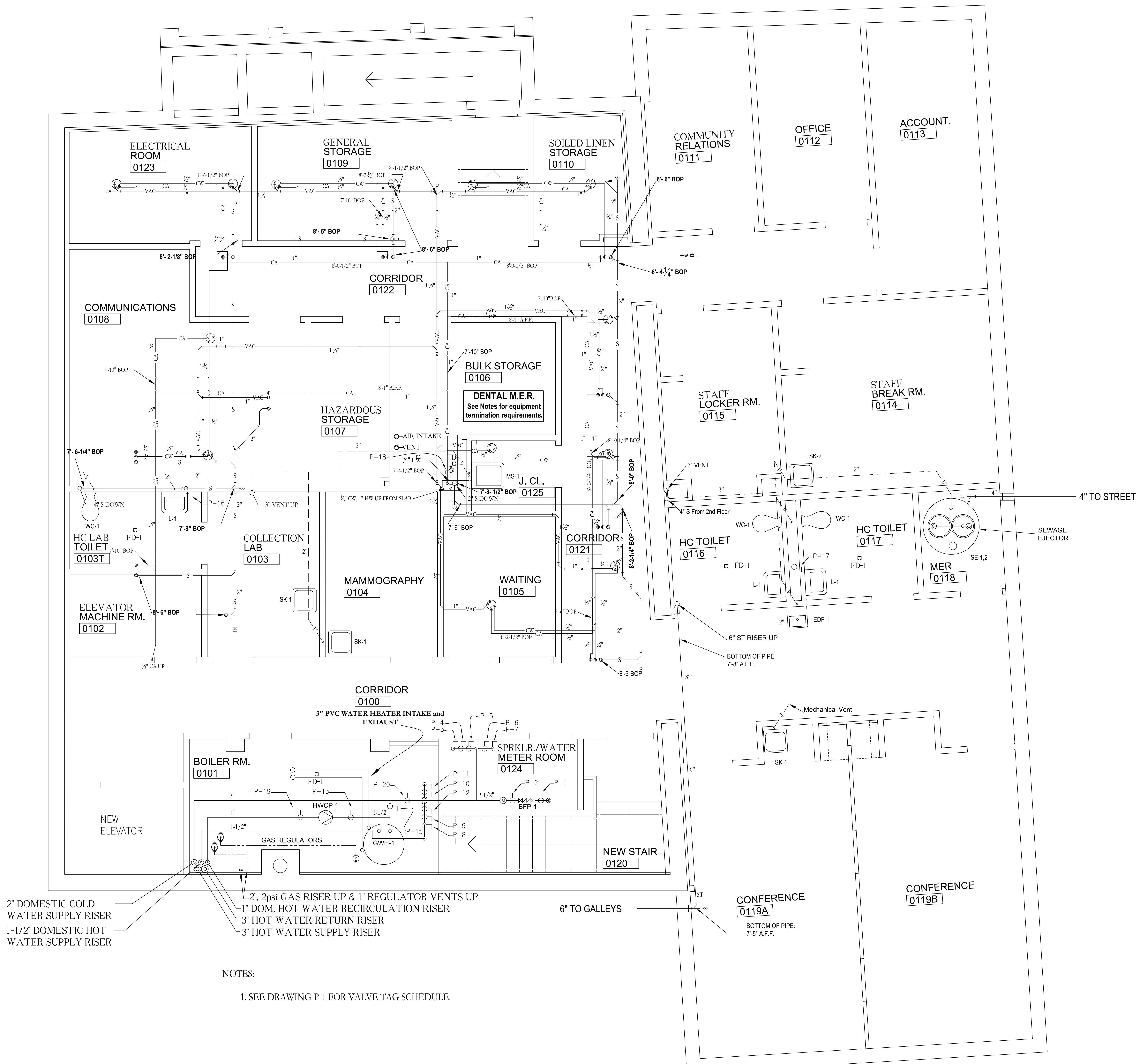
NO.	REVISION	DATE

DWG. TITLE
BASEMENT SUB SLAB PLUMBING
 [As Built]

PROJECT
SOUTHWEST COMMUNITY HEALTH CENTER INC.
 968 FAIRFIELD AVE
 BRIDGEPORT, CONNECTICUT 06605



DES. BY	DWN. BY	DATE	DWG. NO.
CAD	CAD	3/16/07	P-1
EMS JOB NO.	CHECKED BY	SCALE	
1227		3/8"=1'-0"	



2" DOMESTIC COLD WATER SUPPLY RISER
 1-1/2" DOMESTIC HOT WATER SUPPLY RISER
 2" 2psi GAS RISER UP & 1" REGULATOR VENTS UP
 1" DOM. HOT WATER RECIRCULATION RISER
 3" HOT WATER RETURN RISER
 3" HOT WATER SUPPLY RISER

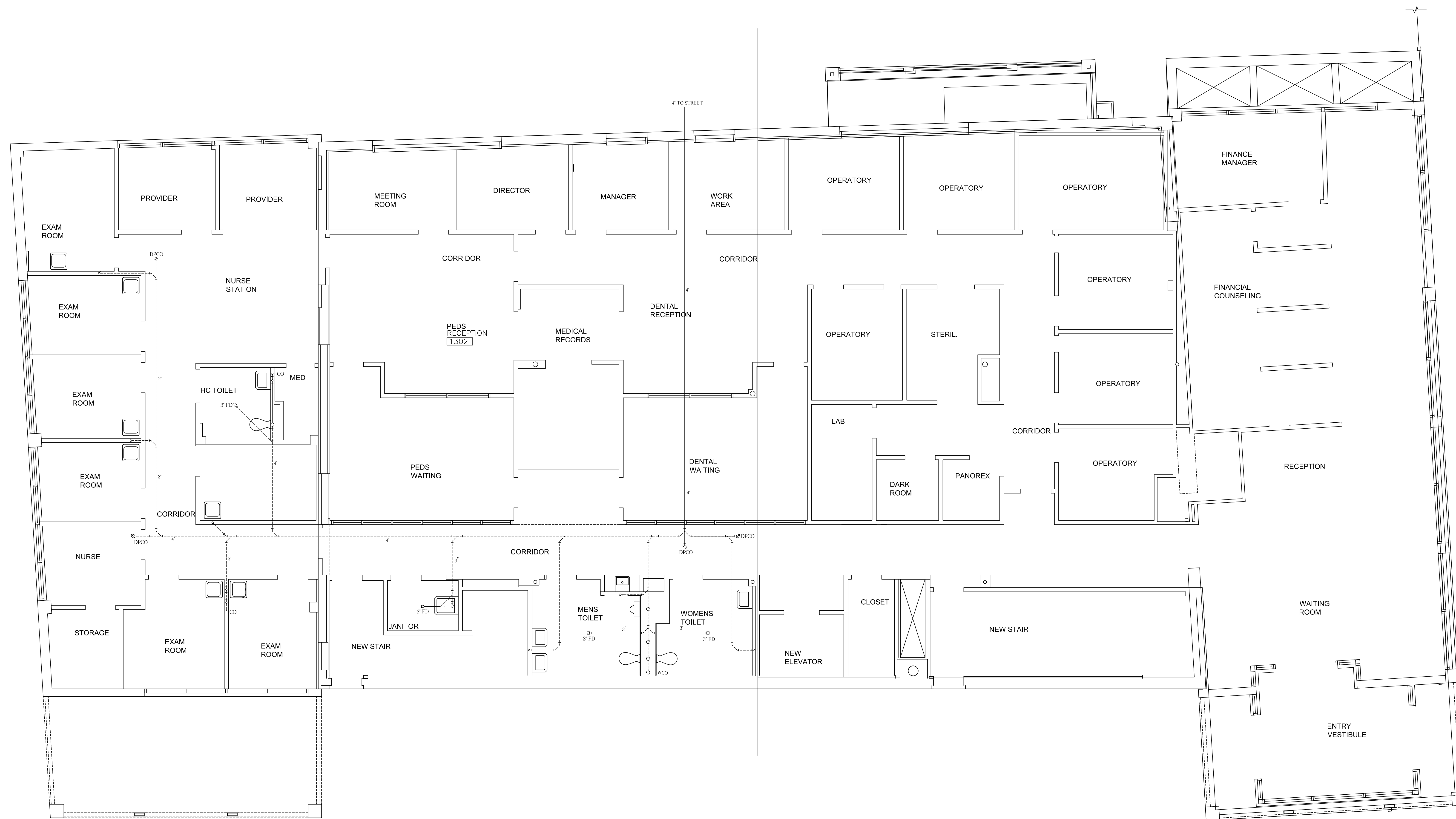
NOTES:
 1. SEE DRAWING P-1 FOR VALVE TAG SCHEDULE.

COORDINATION SIGN OFF		
REP.	COMPANY	DATE
	Perkins Eastman Architects	
	W&M Construction	

NO.	REVISION	DATE
DWG. TITLE		
BASEMENT PLUMBING [As Built]		
PROJECT		
SOUTHWEST COMMUNITY HEALTH CENTER INC. 968 FAIRFIELD AVE BRIDGEPORT, CONNECTICUT 06605		

EMS
 EASTERN MECHANICAL SERVICES, INC.
 64 TRIANGLE STREET SUITE H2
 PO BOX 246
 DANBURY, CT 06810

DES. BY	DWN. BY	DATE	DWG. NO.
CAD	CAD	3/16/07	P-2
EMS JOB NO.	CHECKED BY	SCALE	
1227		3/8"=1'-0"	



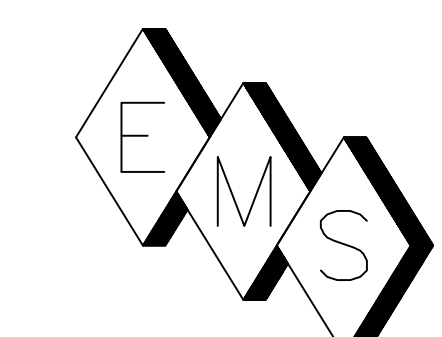
COORDINATION SIGN OFF

REP.	COMPANY	DATE
	Perkins Eastman Architects	
	W&M Construction	
	Patterson Dental	

NO.	REVISION	DATE

DWG. TITLE
 1ST FLOOR SUB SLAB PLUMBING
 [As Built]

PROJECT
 SOUTHWEST COMMUNITY HEALTH
 CENTER INC.
 968 FAIRFIELD AVE
 BRIDGEPORT, CONNECTICUT 06605

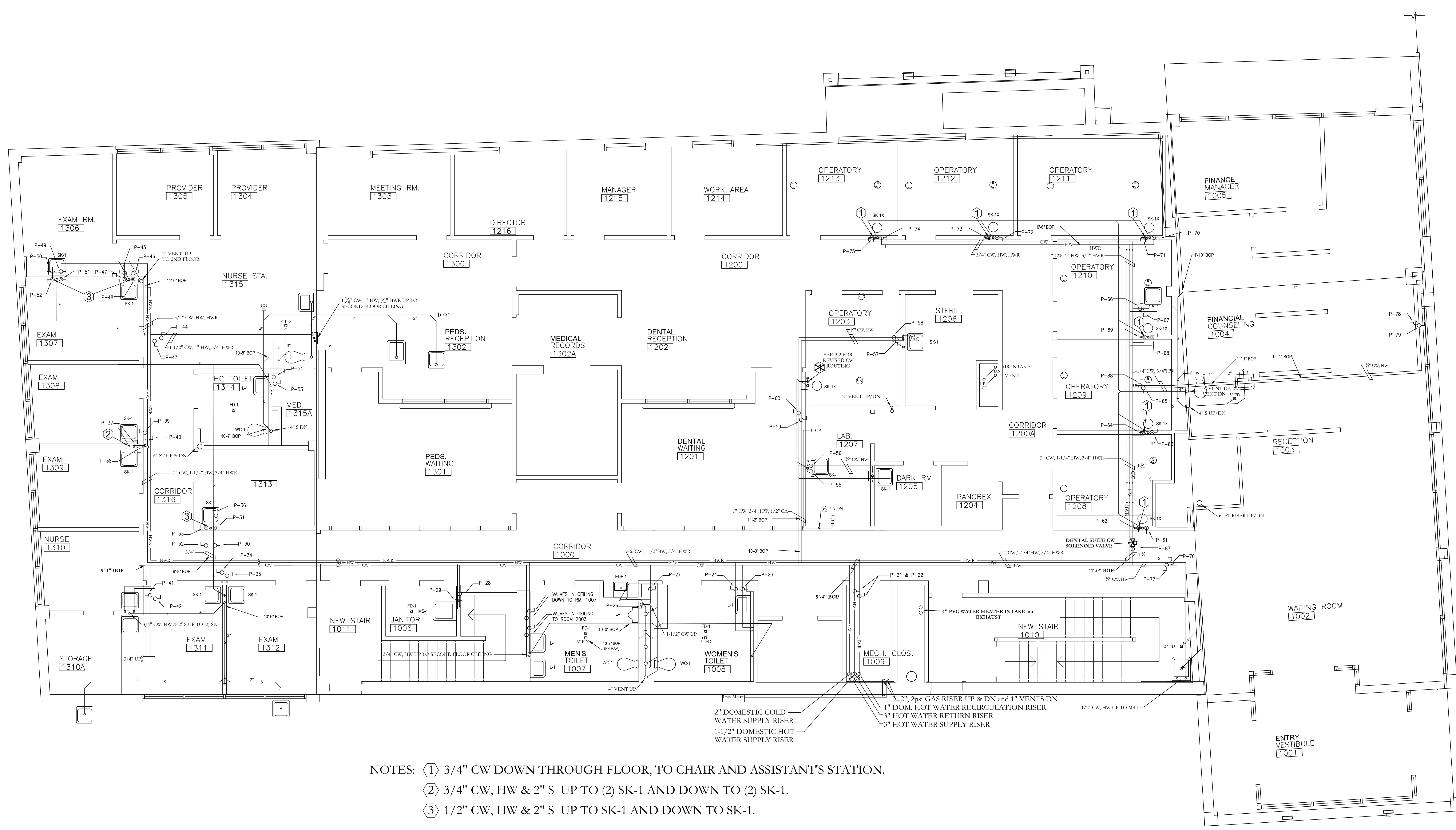


EASTERN MECHANICAL SERVICES, INC
 64 TRIANGLE STREET SUITE H2
 PO BOX 246
 DANBURY, CT 06810

DES. BY	DWN. BY	DATE	DWG. NO.
CAD	CAD	3/16/07	P-3
EMS JOB NO.	CHECKED BY	SCALE	
1227		1/4"=1'-0"	

COORDINATION SIGN OFF

REP.	COMPANY	DATE
	Perkins Eastman Architects	
	W&M Construction	
	Patterson Dental	



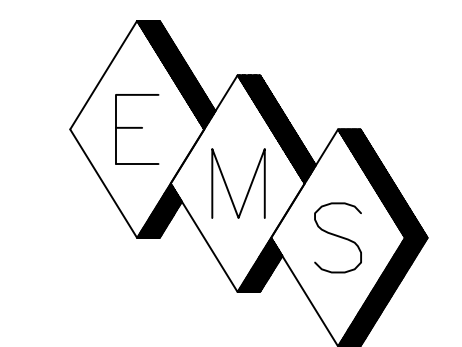
- NOTES: ① 3/4" CW DOWN THROUGH FLOOR, TO CHAIR AND ASSISTANT'S STATION.
 ② 3/4" CW, HW & 2" S UP TO (2) SK-1 AND DOWN TO (2) SK-1.
 ③ 1/2" CW, HW & 2" S UP TO SK-1 AND DOWN TO SK-1.

NOTES:
 1. SEE DRAWING P-1 FOR VALVE TAG SCHEDULE.

NO.	REVISION	DATE

DWG. TITLE
FIRST FLOOR PLUMBING
 [As Built]

PROJECT
SOUTHWEST COMMUNITY HEALTH CENTER INC.
 968 FAIRFIELD AVE
 BRIDGEPORT, CONNECTICUT 06605

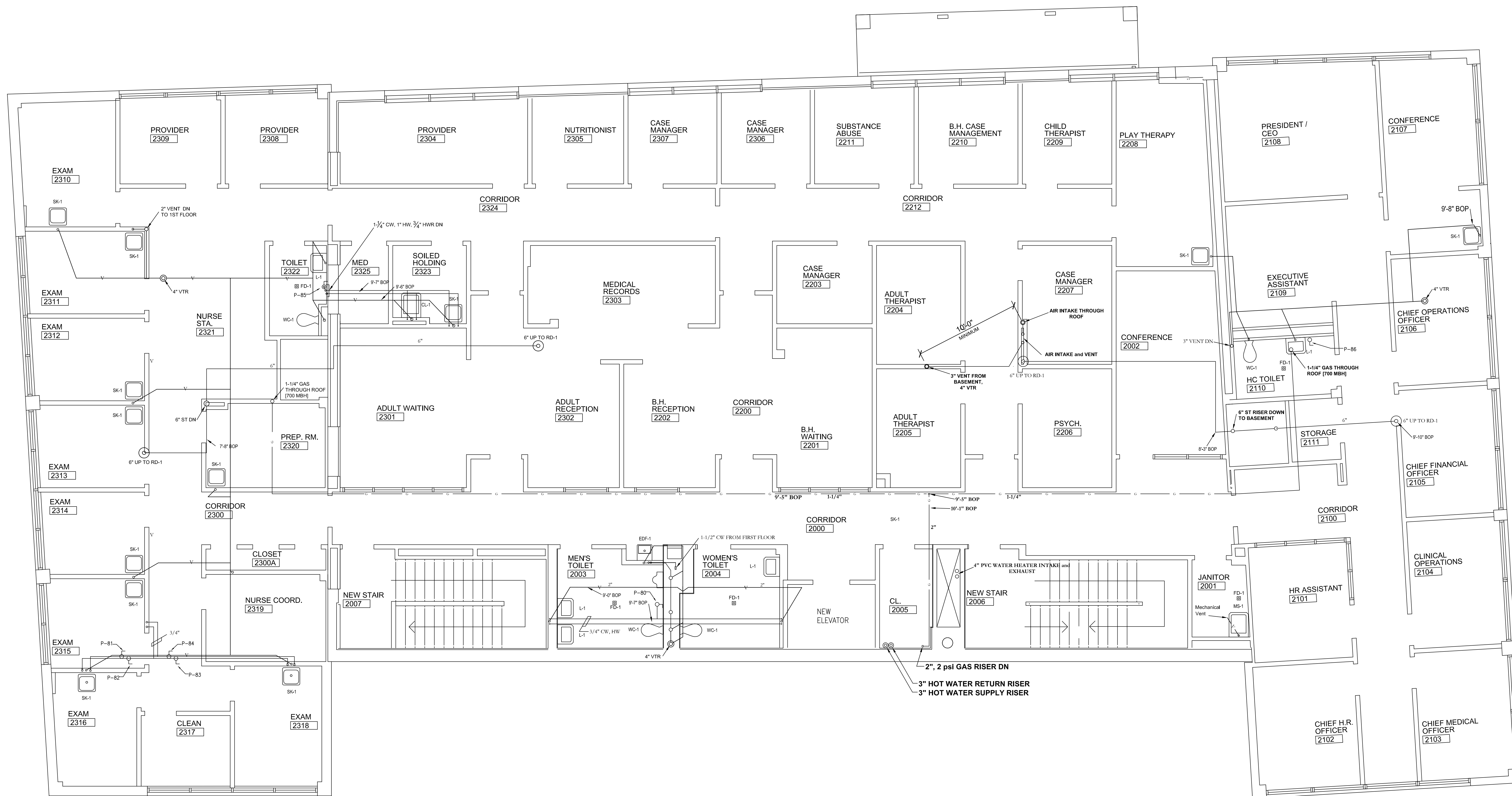


EASTERN MECHANICAL SERVICES, INC
 64 TRIANGLE STREET SUITE H2
 PO BOX 246
 DANBURY, CT 06810

DES. BY	DWN. BY	DATE	DWG. NO.
CAD	CAD	3/16/07	P-4
EMS JOB NO.	CHECKED BY	SCALE	
1227		1/4"=1'-0"	

COORDINATION SIGN OFF

REP.	COMPANY	DATE
	Perkins Eastman Architects	
	W&M Construction	
	Patterson Dental	

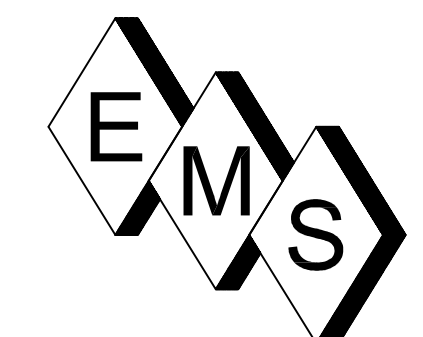


NOTES:
 1. SEE DRAWING P-1 FOR VALVE TAG SCHEDULE.

NO.	REVISION	DATE

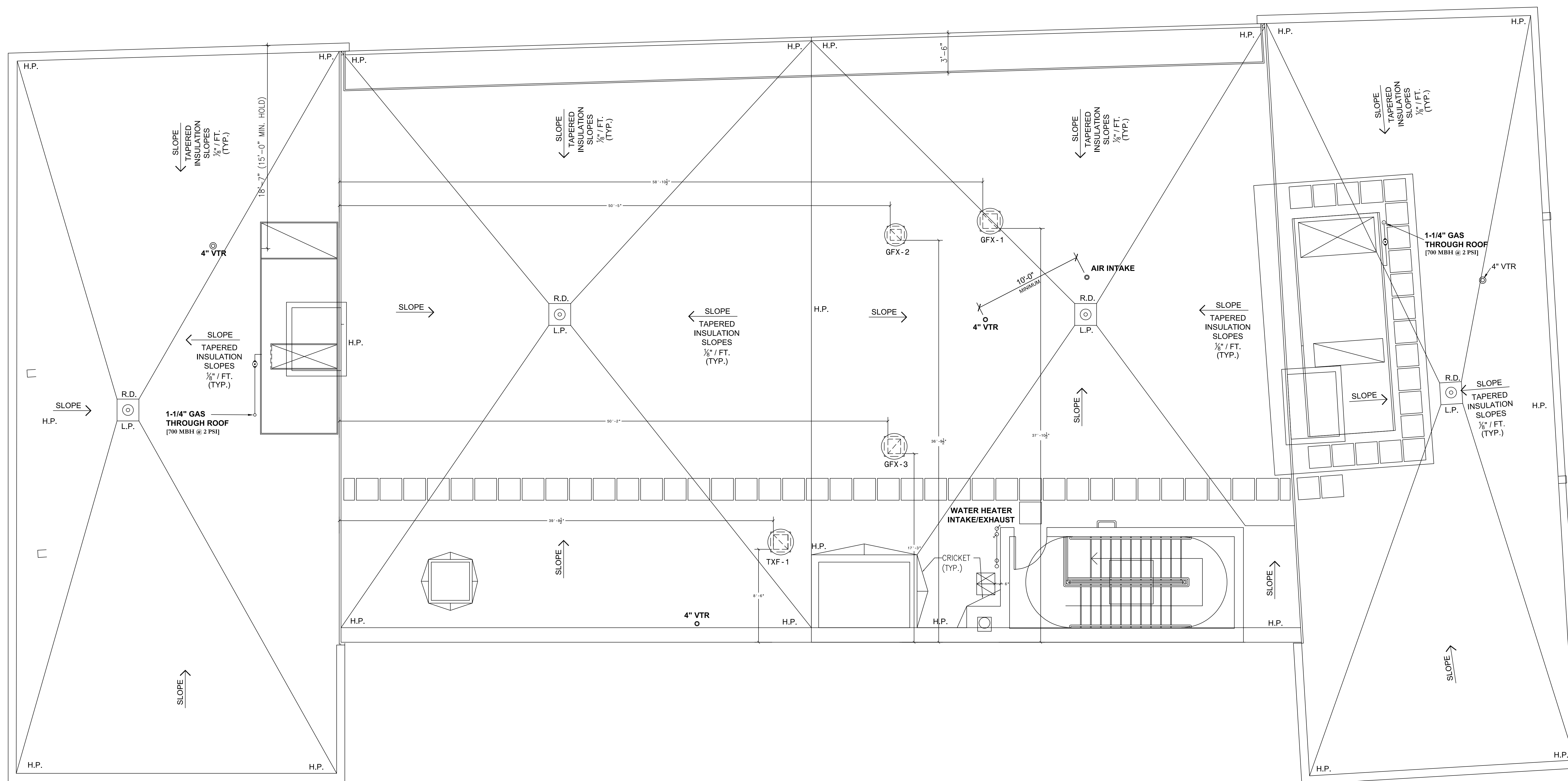
DWG. TITLE
 2ND FLOOR PLUMBING
 [As Built]

PROJECT
 SOUTHWEST COMMUNITY HEALTH
 CENTER INC.
 968 FAIRFIELD AVE
 BRIDGEPORT, CONNECTICUT 06605



EASTERN MECHANICAL SERVICES, INC
 64 TRIANGLE STREET SUITE H2
 PO BOX 246
 DANBURY, CT 06810

DES. BY	OWN. BY	DATE	DWG. NO.
CAD	CAD	3/16/07	P-5
EMS JOB NO.	CHECKED BY	SCALE	
1227		1/4"=1'-0"	



COORDINATION SIGN OFF

REP.	COMPANY	DATE
	Perkins Eastman Architects	
	W&M Construction	
	Patterson Dental	

SHEET NOTES:

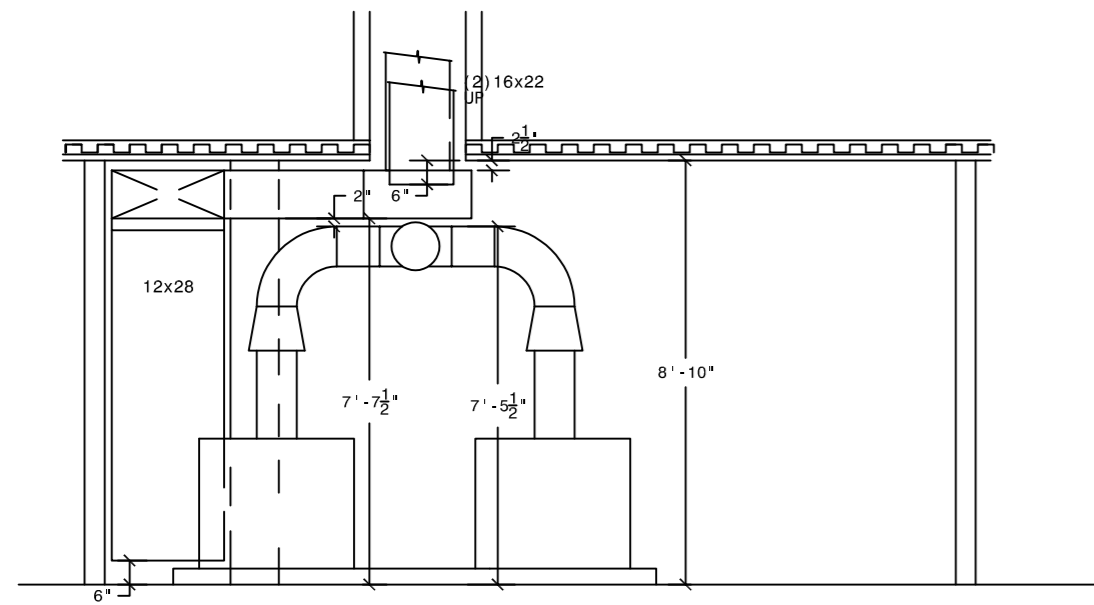
NO.	REVISION	DATE

DWG. TITLE
ROOF PLUMBING
 [As Built]

PROJECT
 SOUTHWEST COMMUNITY HEALTH
 CENTER INC.
 968 FAIRFIELD AVE
 BRIDGEPORT, CONNECTICUT 06605

EMS
 EASTERN MECHANICAL SERVICES, INC
 64 TRIANGLE STREET SUITE H2
 PO BOX 246
 DANBURY, CT 06810

DES. BY	DWN. BY	DATE	DWG. NO.
CAD	CAD	3/16/07	P-6
EMS JOB NO.	CHECKED BY	SCALE	
1227		1/4"=1'-0"	



BOILER ROOM
ELEVATION VIEW



BASEMENT

AS-BUILTS
3/13/07

REVISIONS

NO.	DATE	BY	REVISION
1	10/08/06	ONE	REVISED DUCT WHERE NOTED

STAMP:

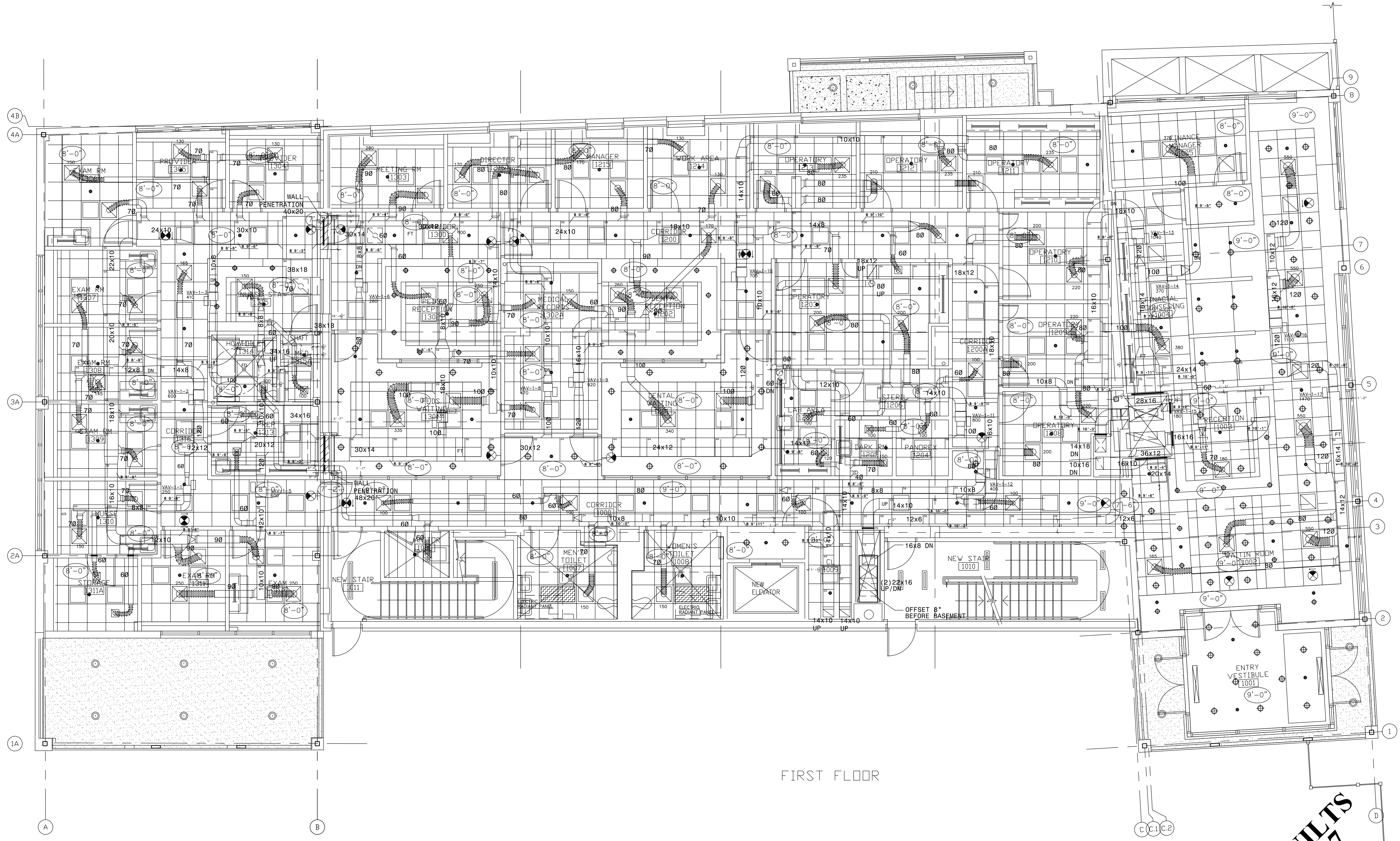
DATE: 9/08/06
DRAWN BY: K.M.S.
SCALE: 1/4" = 1'-0"
FILE NUMBER:

DRAWING NUMBER:
M-1
SHEET 1 OF 4

BASEMENT HVAC PLAN

NO.	DATE	BY	REVISIONS
1	10/12/06	MS	BASED NOTIFIED UNDER FIRE DAMPER

STAMP:	
DATE:	9/08/06
DRAWN BY:	K.M.S.
SCALE:	1/4" = 1'-0"
FILE NUMBER:	
DRAWING NUMBER:	M-2
SHEET	2 OF 4



FIRST FLOOR

AS-BUILTS
 3/13/07

REVISIONS

NO.	DATE	BY	DESCRIPTION
1	8/13/06	MS	ISSUED UNREVISED CHANGE STATE ADDRESS

STAMP:

DATE: 9/08/06

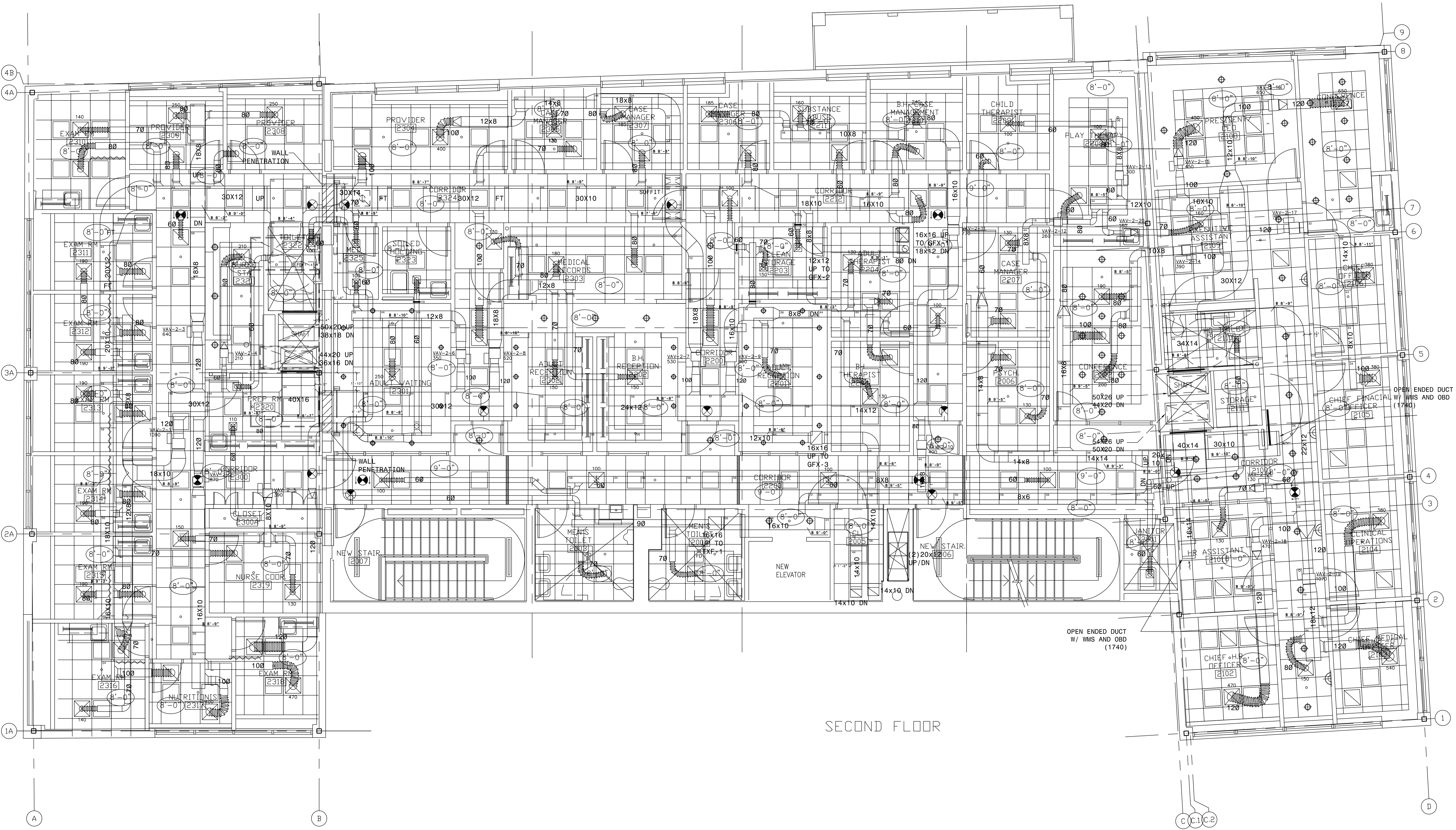
DRAWN BY: K.M.S.

SCALE: 1/4" = 1'-0"

FILE NUMBER:

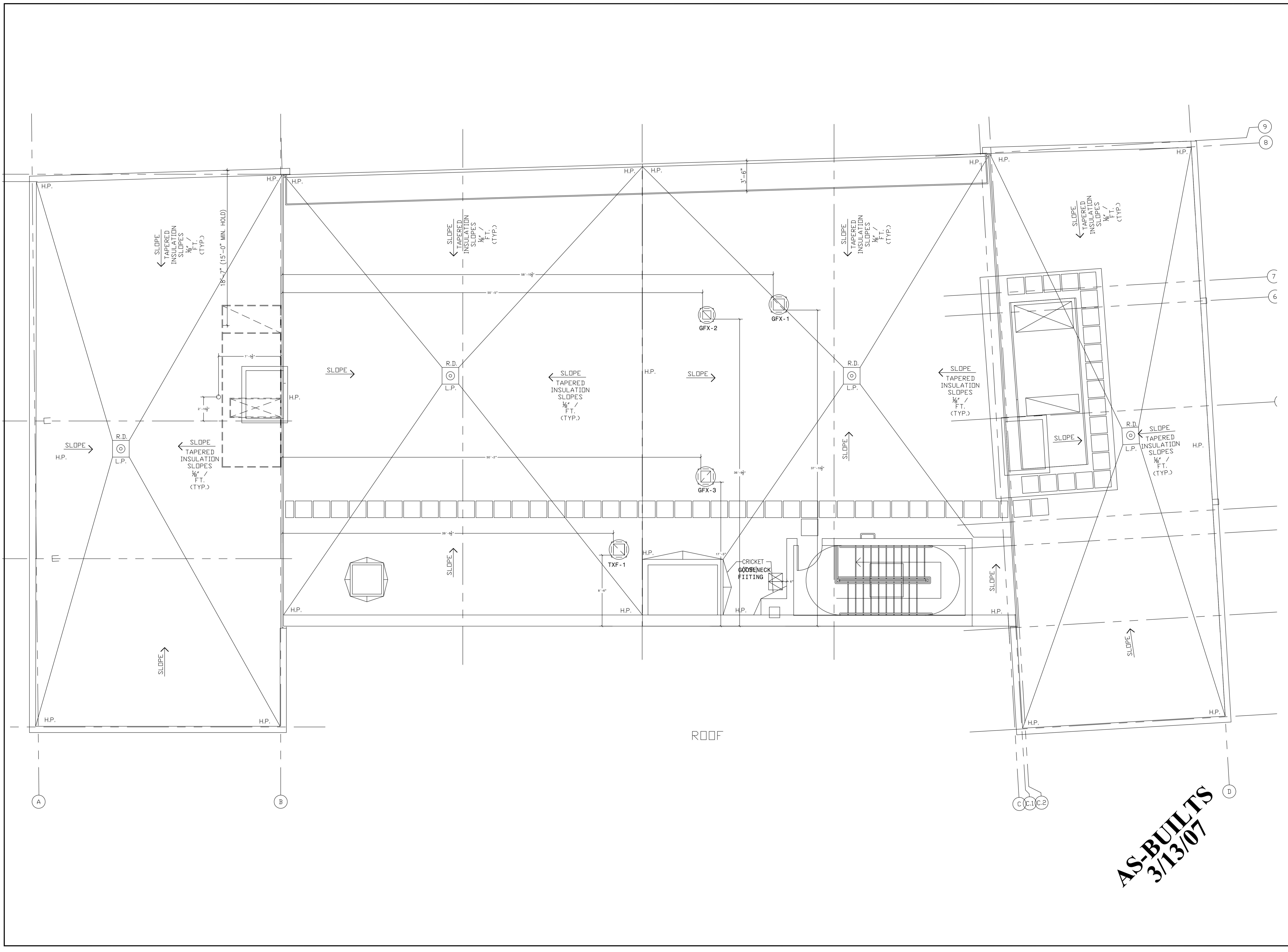
DRAWING NUMBER:

M-3



SECOND FLOOR

AS-BUILTS
 3/13/07



ROOF

AS-BUILTS
3/13/07

ROOF HVAC PLAN