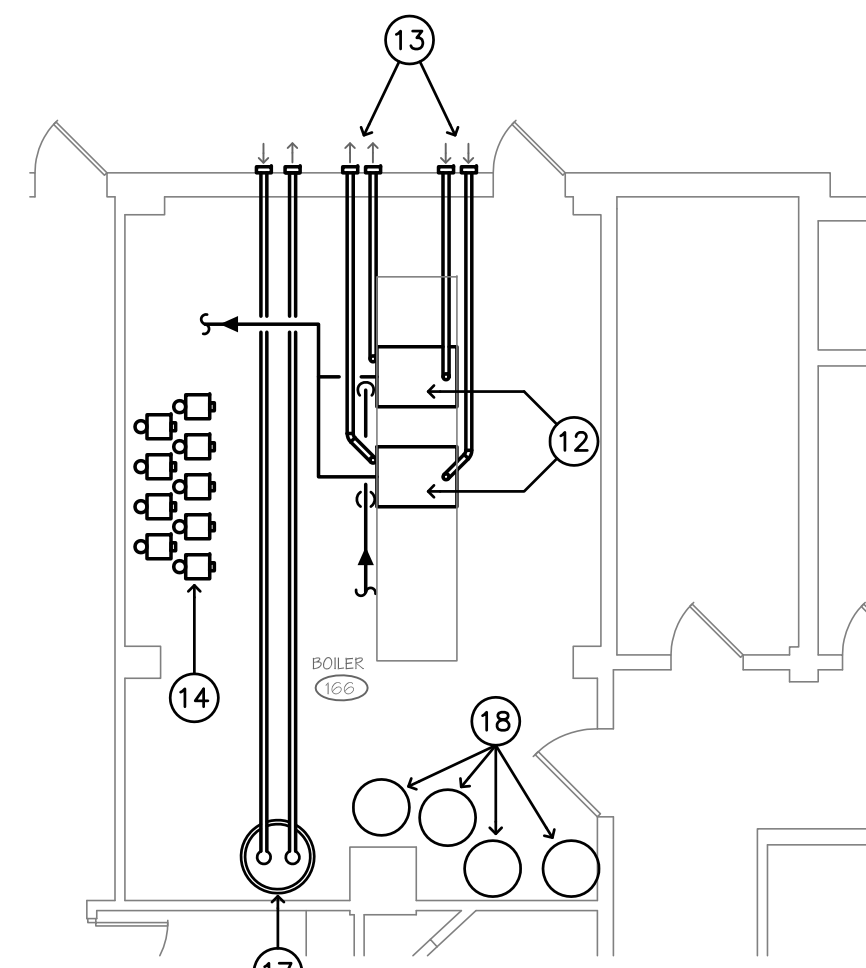




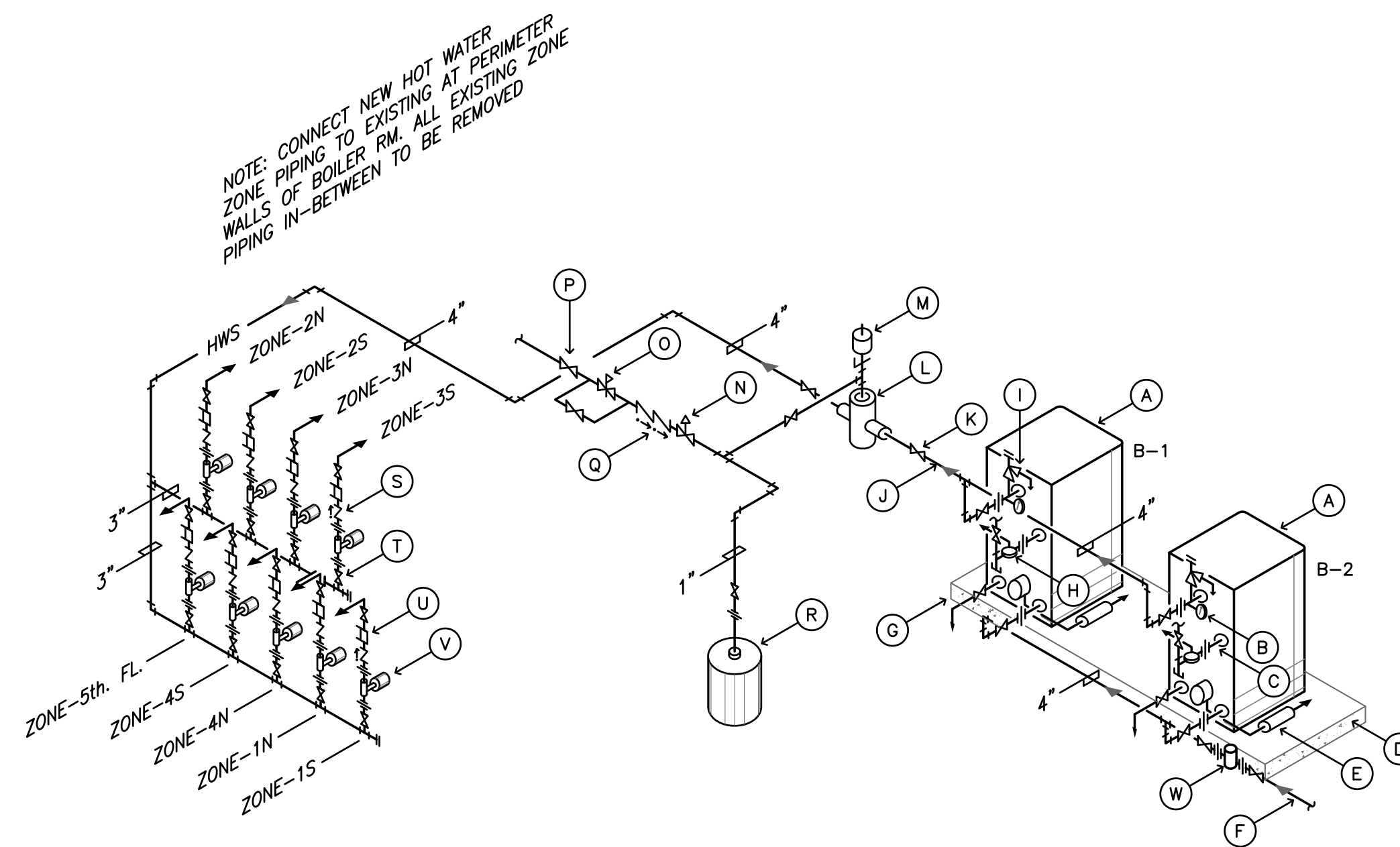


**LEGEND**

- 1 EXISTING 8" FIRE LINE UP THROUGH FLOOR SLAB TO REMAIN.
- 2 EXISTING DOMESTIC WATER LINE UP THROUGH FLOOR SLAB WITH METER TO REMAIN.
- 3 EXISTING VENTS FROM FOUR (4) SEALED COMBUSTION DOMESTIC WATER HEATERS TO REMAIN.
- 4 REMOVE EXISTING "HYDRO THERM" MULTI-TEMP, GAS FIRED 6 SECTION MODULAR BOILERS, SUPPLY AND RETURN HEATERS, VALVES, GAS PIPING AND BREECHING.
- 5 FOUR (4) EXISTING HIGH EFFICIENCY SEALED COMBUSTION DOMESTIC WATER HEATERS TO BE REMOVED.
- 6 DISCONNECT AND REMOVE EXISTING 120 GALLON (LAUNDRY) HOT WATER STORAGE TANK.
- 7 DISCONNECT AND REMOVE EXISTING (LAUNDRY) GAS FIRED ATMOSPHERIC TYPE DOMESTIC WATER HEATER AND ACCESSORIES REMOVE FLUE PIPING AND PATCH CHIMNEY. REMOVE GAS PIPING CONNECTION AND MODIFY PIPING FOR CONNECTION TO NEW WATER HEATER.
- 8 EXISTING FIRE PUMP CONTROL PANEL TO REMAIN.
- 9 EXISTING AUTOMATIC POWER TRANSFER SWITCH TO REMAIN.
- 10 REMOVE ALL EXISTING HOT WATER (SPACE HEATING) CIRCULATORS, ASSOCIATED VALVES, SUPPLY AND RETURN PIPING, FITTINGS, INSULATION AND HANGERS UP TO PERIMETER WALLS IN BOILER ROOM AND PROVIDE ALL NEW PIPING, FITTINGS, VALVES, HANGERS AND INSULATION.
- 11 EXISTING 40 H.P. FIRE PUMP.
- 12 NEW "AERCO" HIGH EFFICIENCY GAS FIRE BOILER SEE PIPING SCHEMATIC.
- 13 NEW 6" DIA. COMBUSTION/EXHAUST PIPING THROUGH EXTERIOR WALL.
- 14 NINE (9) NEW ECOCIRC XL HIGH EFFICIENCY HOT WATER (SPACE HEATING) CIRCULATORS.
- 15 EXISTING UNDERSLAB SUPPLY AND RETURN PIPING TO PERIMETER RADIATION HAS BEEN CAPPED AND PIPING ABANDONED. UNDER THIS CONTRACT THE RADIATION SHALL BE ACTIVATED. NEW SUPPLY AND RETURN MAINS SHALL BE RUN ABOVE SUSPENDED CEILING AND DROPPED DOWN TO REFEED RADIATION. PIPING SHALL BE "M" COPPER WITH 1-1/2" INSULATION.
- 16 REMOVE EXISTING WALL HUNG SELF-CONTAINED HEATING/A.C. UNIT AND REPLACE WITH A "BARD" MODEL WA/WL-3S, 460V/3PH, 9KW ELECTRIC REHEAT, 2" MERV 8 FILTERS, FRONT SUPPLY AND RETURNS WITH CONTROLS AND ALARMS.
- 17 PROVIDE AND INSTALL A "A.O. SMITH" COMMERCIAL HIGH EFFICIENCY WATER STORAGE HEATER CYCLONE XHE MODEL # BTH-400 WITH 1-1/2" INLET AND OUTLET CONNECTIONS VALVE BOTH. HEATER TO BE ASME RATED AND STAMPED. HEATER SHALL HAVE THE CAPACITY TO SUPPLY 466 G.P.H. OF WATER AT 100°F TEMPERATURE RISE. SET HEATER ABOVE FLOOR ON 4" HIGH SOLID CONCRETE BLOCKS. EXTEND EXISTING HOT AND COLD WATER PIPING TO NEW HEATER FROM OLD HEATER LOCATION AND MODIFY AS NECESSARY. EXTEND AND RECONNECT GAS PIPING TO NEW HEATER. PROVIDE MAXITROL 325-5L GAS PRESSURE REGULATOR WITH POSITIVE DEAD-END LOCK-UP, BALL VALVE, DIRT POCKET AND UNION AT CONNECTION. INLET PRESSURE TO REGULATOR IS 2 P.S.I. OUTLET PRESSURE 10" W.C.
- 18 EXISTING DOMESTIC WATER HEATERS TO BE REPLACED IN KIND WITH HTP "PHOENIX" MULTI-FIT COMMERCIAL CONDENSING HEATERS MODEL # PHM199-100. RECONNECT TO EXISTING SERVICES. CONTRACTOR TO PROVIDE AND INSTALL NEW CONDENSATE NEUTRALIZERS, GAS PRESSURE REGULATOR ON EXISTING GAS DROP TO EACH WATER HEATER (MAXITROL MODEL # 325-51).
- 19 NEW 1-1/4" HOT WATER SUPPLY AND RETURN MAINS TO REFEED RADIATION.
- 20 REMOVE PORTION OF RADIATION FOR NEW DOOR OPENING.



**NEW BOILER ROOM PLAN  
MECHANICAL**  
SCALE: 1/8" = 1'-0"



**NEW BOILER ROOM PIPING PLAN**  
N.T.S.

**BOILER FLOW COORDINATION NOTE**

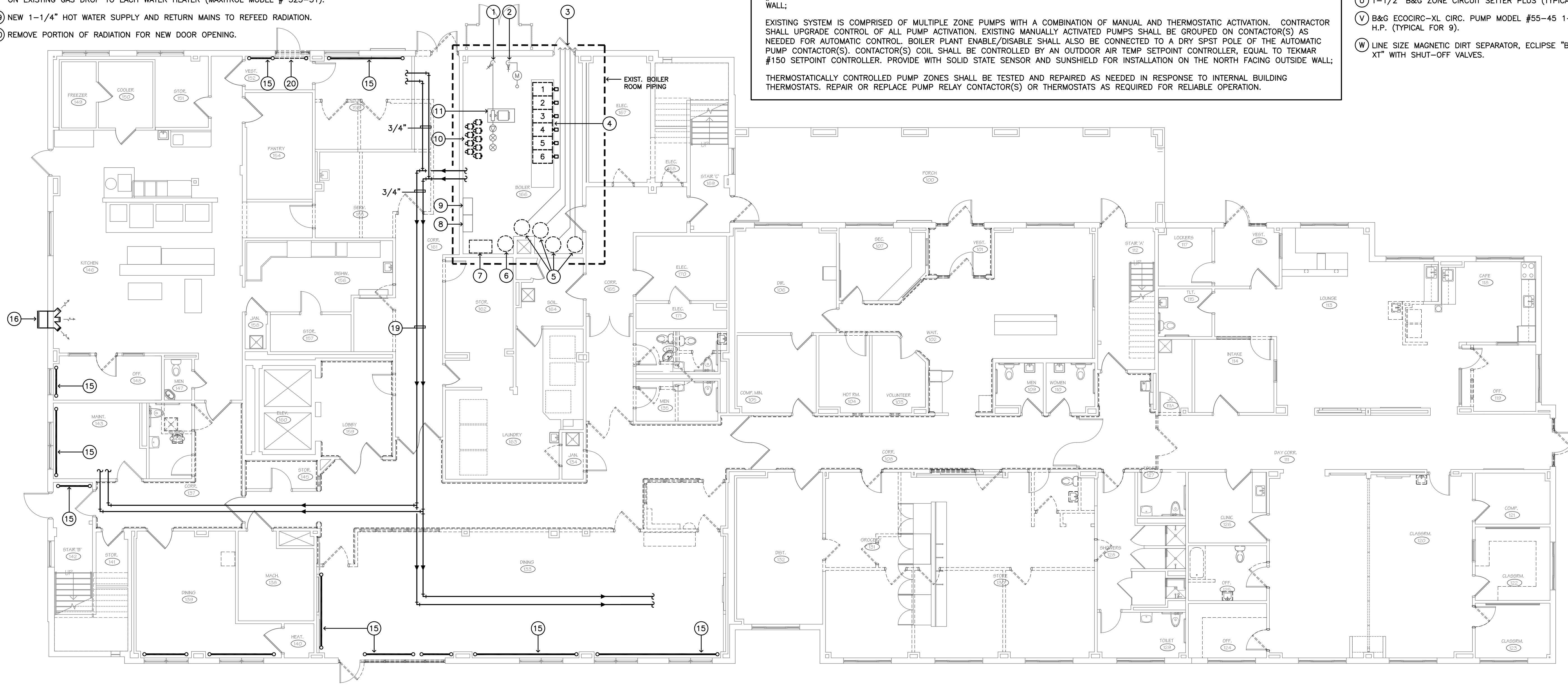
EXISTING SYSTEM IS COMPRISED OF MULTIPLE ZONE PUMPS WITH A COMBINATION OF MANUAL AND THERMOSTATIC ACTIVATION. CONTRACTOR SHALL UPGRADE CONTROL OF ALL PUMP ACTIVATION. EXISTING MANUALLY ACTIVATED PUMPS SHALL BE GROUPED ON CONTACTOR(S) AS NEEDED FOR AUTOMATIC CONTROL. BOILER PLANT ENABLE/DISABLE SHALL ALSO BE CONNECTED TO A DRY SPST POLE OF THE AUTOMATIC PUMP CONTACTOR(S). CONTACTOR(S) COIL SHALL BE CONTROLLED BY AN OUTDOOR AIR TEMP SETPOINT CONTROLLER, EQUAL TO TEKMAR #150 SETPOINT CONTROLLER. PROVIDE WITH SOLID STATE SENSOR AND SUNSHIELD FOR INSTALLATION ON THE NORTH FACING OUTSIDE WALL;

EXISTING SYSTEM IS COMPRISED OF MULTIPLE ZONE PUMPS WITH A COMBINATION OF MANUAL AND THERMOSTATIC ACTIVATION. CONTRACTOR SHALL UPGRADE CONTROL OF ALL PUMP ACTIVATION. EXISTING MANUALLY ACTIVATED PUMPS SHALL BE GROUPED ON CONTACTOR(S) AS NEEDED FOR AUTOMATIC CONTROL. BOILER PLANT ENABLE/DISABLE SHALL ALSO BE CONNECTED TO A DRY SPST POLE OF THE AUTOMATIC PUMP CONTACTOR(S). CONTACTOR(S) COIL SHALL BE CONTROLLED BY AN OUTDOOR AIR TEMP SETPOINT CONTROLLER, EQUAL TO TEKMAR #150 SETPOINT CONTROLLER. PROVIDE WITH SOLID STATE SENSOR AND SUNSHIELD FOR INSTALLATION ON THE NORTH FACING OUTSIDE WALL;

THERMOSTATICALLY CONTROLLED PUMP ZONES SHALL BE TESTED AND REPAIRED AS NEEDED IN RESPONSE TO INTERNAL BUILDING THERMOSTATS. REPAIR OR REPLACE PUMP RELAY CONTACTOR(S) OR THERMOSTATS AS REQUIRED FOR RELIABLE OPERATION.

**BOILER PIPING LEGEND**

- A "AREO" BENCHMARK BMK-1500 CONDENSING BOILER.
- B PRESSURE & TEMPERATURE GAUGE.
- C 2" GAS CONNECTION ON BOILER. RUN 1" 2lb. GAS LINE TO INLET OF GAS REGULATOR AND 1-1/2" (10 W.C. OUTLET PRESSURE) TO BOILER. GAS REGULATOR SHALL BE EQUAL TO MAXITROL MODEL # 325-9L WITH POSITIVE DEAD-END LOCK-UP. VENT REGULATOR TO EXTERIOR OF BUILDING.
- D EXISTING CONCRETE HOUSEKEEPING PAD.
- E CONDENSATE NEUTRALIZING TUBE, PIPE DISCHARGE TO FLOOR DRAIN.
- F NEW 4" RETURN HEADER CONNECT TO EXISTING.
- G 1-1/2" DRAIN.
- H BALL VALVE, DIRT LEG, REGULATOR AND UNION AT CONNECTION.
- I T&P RELIEF VALVE.
- J NEW 4" HOT WATER SUPPLY HEADER.
- K LINE SIZE GATE VALVE.
- L LINE SIZE AIR SEPARATOR, BELL & GOSSETT "ROLAIRTROL"
- M AUTOMATIC AIR VENT.
- N 3/4" AUTOMATIC "FAST FILL" FEED WATER VALVE.
- O 3/4" PRESSURE REDUCING VALVE WITH LINE SIZE BYPASS.
- P 3/4" BALL VALVE.
- Q 3/4" "WATTS" # 909 BACKFLOW PREVENTER WITH AIR GAP DRAIN (PIPE TO FLOOR DRAIN).
- R FLOOR MOUNTED ASME EXPANSION TANK, BELL & GOSSETT SERIES D-144V. APPROX. DIMENSIONS 24" DIA. x 48" HIGH, 1" TANK CONN. WEIGHT: 244 lbs.
- S 1-1/2" CHECK VALVE (TYPICAL FOR 9).
- T 1-1/2" BALL VALVE (TYPICAL FOR 18).
- U 1-1/2" B&G ZONE CIRCUIT SETTER PLUS (TYPICAL FOR 9).
- V B&G ECOCIRC-XL CIRC. PUMP MODEL #55-45 1-1/2", 1/2 H.P. (TYPICAL FOR 9).
- W LINE SIZE MAGNETIC DIRT SEPARATOR, ECLIPSE "BOILERMAG XT" WITH SHUT-OFF VALVES.



**FIRST FLOOR PLAN - MECHANICAL**  
SCALE: 1/8" = 1'-0"



**ANTINOZZI ASSOCIATES**  
ARCHITECTURE & INTERIORS

COPYRIGHT 2017 BY:  
ANTINOZZI ASSOCIATES, P.C.  
271 Fairfield Avenue  
Bridgeport, Connecticut 06604  
Tel: (203) 377-1300  
Fax: (203) 378-3002

301 Merritt 7  
Norwalk, Connecticut 06851  
Tel: (203) 956-5460 www.antinozzi.com

These documents have been prepared specifically for this project. Reproduction or other use of these documents is prohibited without the approval of the Engineer.

CONSULTANT:



140 Washington Avenue, 3rd Floor  
North Haven, Connecticut 06473  
P: 203.239.0818 F: 203.239.7275  
gdd@aol.net

REVISIONS:

DATE	DESCRIPTION

**JOEL SMILOW CARE CENTER OF  
THE BRIDGEPORT RESCUE MISSION**  
INTERIOR RENOVATIONS  
725 PARK AVENUE  
BRIDGEPORT, CONNECTICUT

DRAWING TITLE:  
**FIRST FLOOR PLAN  
HVAC & PARTIAL  
PLUMBING**

SCALE: 1/8" = 1'-0" DRAWN BY: BIC REVIEWED BY: GDD  
DRAWING NO.:

**M-3**

DATE: 07 MAY 2019 GDD JOB NUMBER: 19469

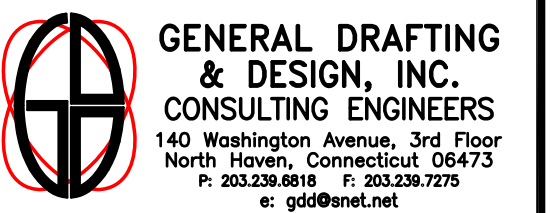


ANTINOZZI ASSOCIATES  
ARCHITECTURE & INTERIORS

COPYRIGHT 2017 BY:  
ANTINOZZI ASSOCIATES, P.C.  
271 Fairfield Avenue  
Bridgeport, Connecticut 06604  
Tel: (203) 377-1300  
Fax: (203) 378-3002  
301 Merritt 7  
Norwalk, Connecticut 06851  
Tel: (203) 956-5460 www.antinozzi.com

These documents have been prepared specifically for this project. Reproduction or other use of these documents is prohibited without the approval of the Engineer.

CONSULTANT:



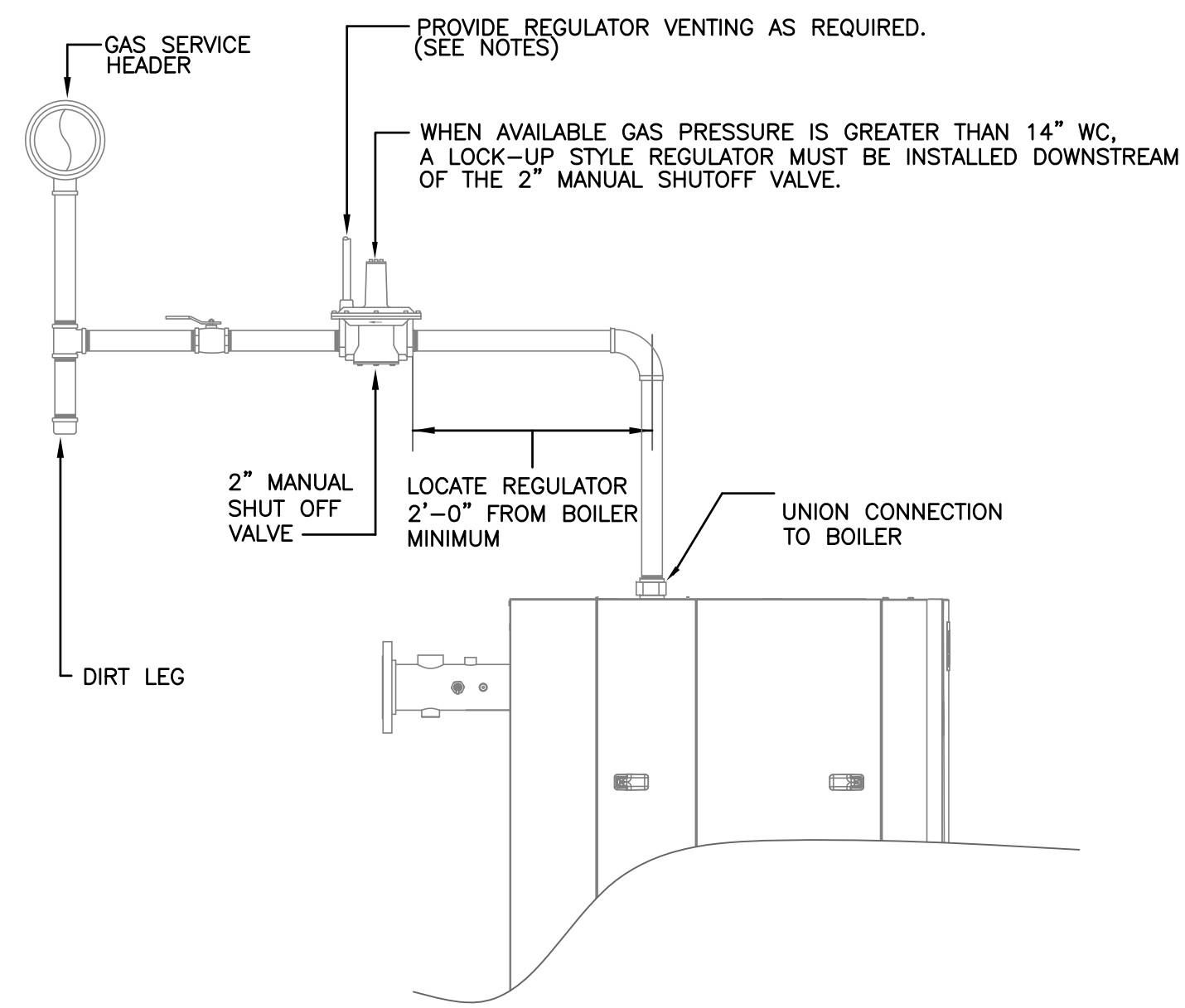
REVISIONS:  
DATE DESCRIPTION

NO.	DATE	DESCRIPTION

JOEL SMILOW CARE CENTER OF  
THE BRIDGEPORT RESCUE MISSION  
INTERIOR RENOVATIONS  
725 PARK AVENUE  
BRIDGEPORT, CONNECTICUT

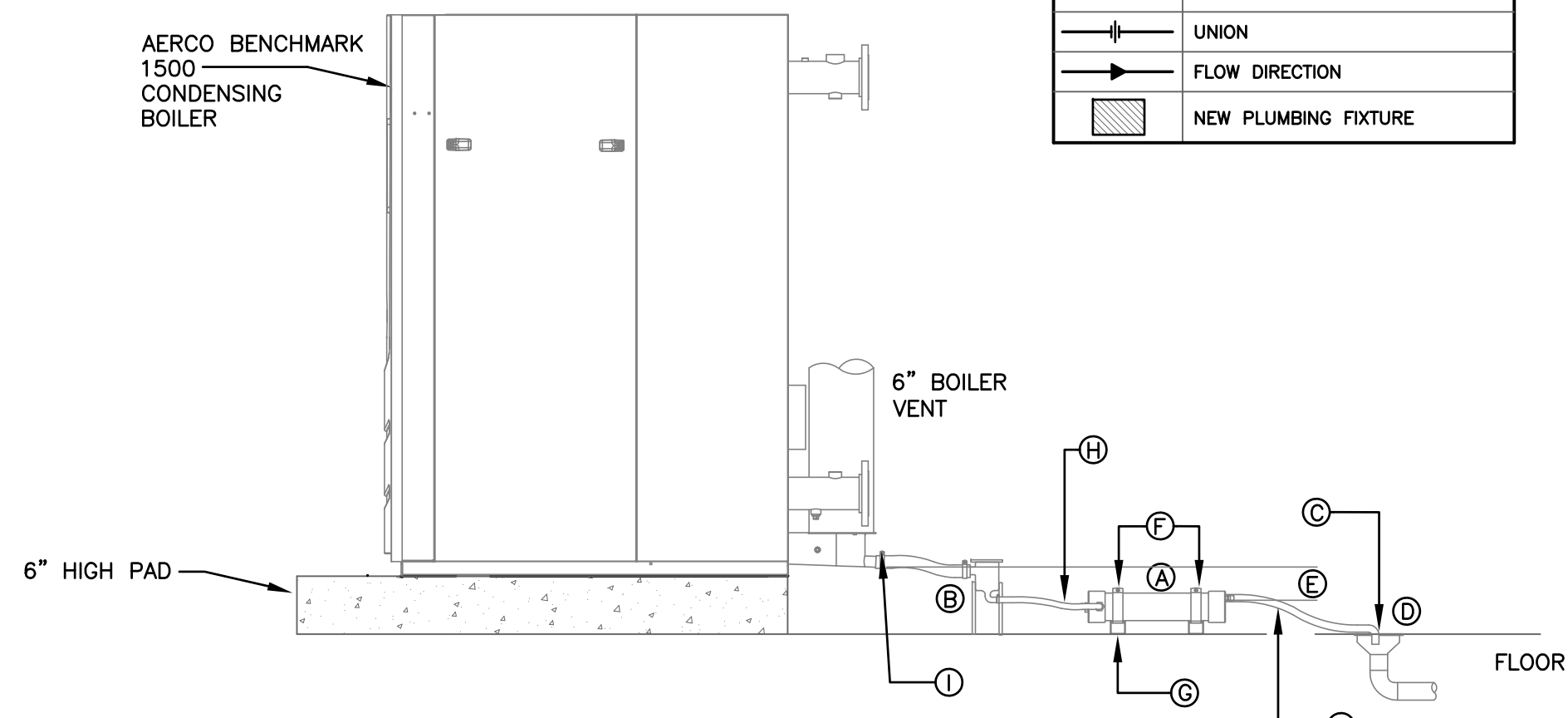
DETAIL,  
SCHEDULES AND  
SYMBOLS

SCALE: NONE DRAWN BY: BIC REVIEWED BY: GDD  
DRAWING NO. M-4  
DATE: 07 MAY 2019 GDD JOB NUMBER: 19469



BENCHMARK 1500  
GAS CONNECTION DETAIL  
N.T.S.

PLUMBING SYMBOLS	
	NEW COLD WATER LINE
	HOT WATER LINE
	RECIRC. HOT WATER LINE
	VENT LINE
	PIPING TO BE REMOVED
	NATURAL GAS LINE
	PITCH DIRECTION DOWN
	SANITARY LINE
	SANITARY LINE (BELOW FLOOR)
	POINT OF CONNECTION
	BALL VALVE
	UNION
	FLOW DIRECTION
	NEW PLUMBING FIXTURE

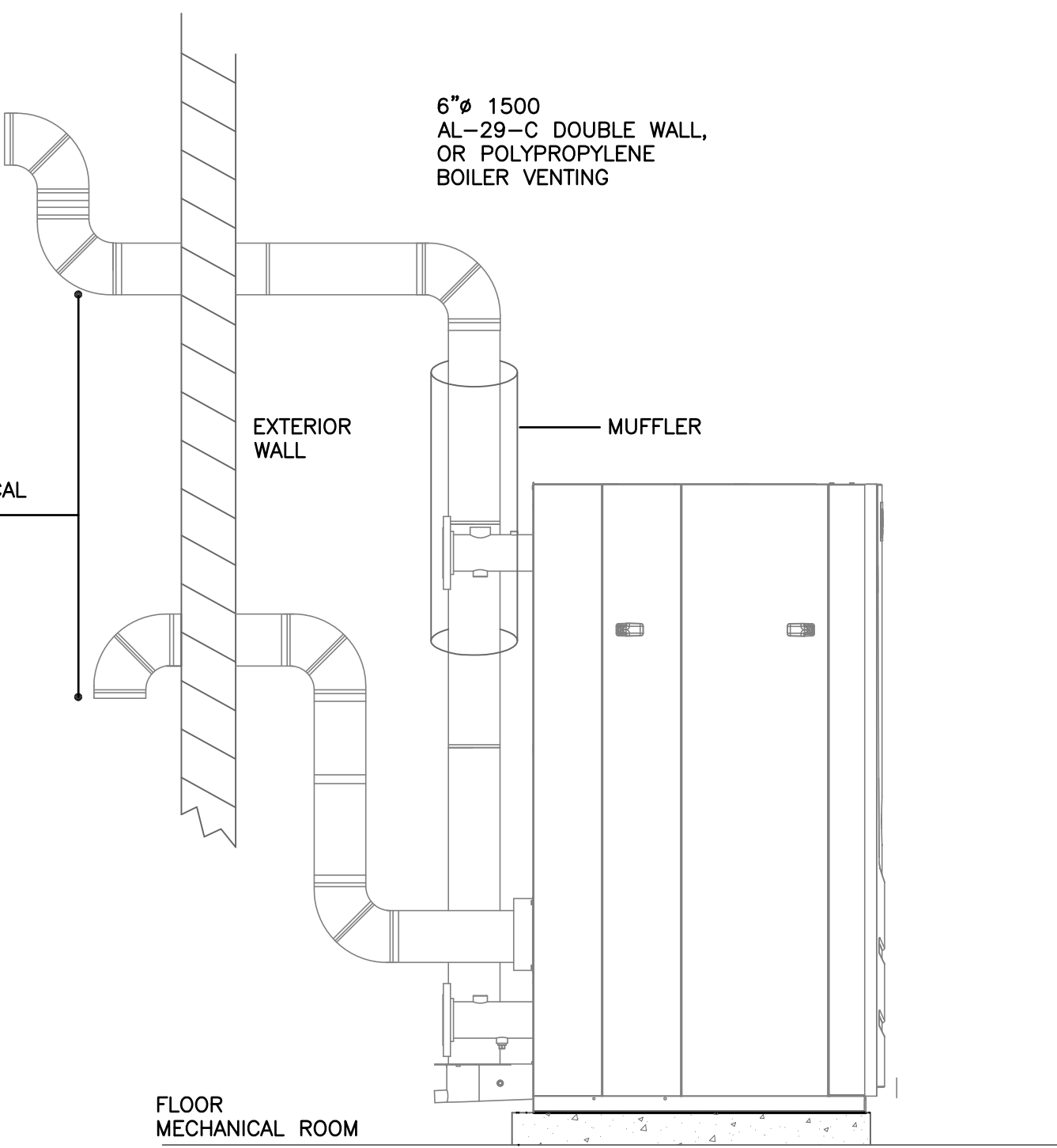


BENCHMARK 1500  
WITH CONDENSATE  
TUBE INSTALLATION  
N.T.S.

- |                                                                                                     |                                                                                                                                     |
|-----------------------------------------------------------------------------------------------------|-------------------------------------------------------------------------------------------------------------------------------------|
| A. JIM CONDENSATE NEUTRALIZING TUBE.                                                                | F. UNISTRUT CLAMPS, SECURE TUBE IN POSITION AND SECURELY. CONDENSATE OUTLET MUST BE ORIENTED UP, WITH CONDENSATE INLET TO THE SIDE. |
| B. FACTORY SUPPLIED CONDENSATE TRAP. PROVIDE FIELD FABRICATED SUPPORTS AS REQUIRED.                 | G. UNISTRUT BASE, BOLT TO FLOOR OR MOUNTING PAD.                                                                                    |
| C. CONDENSATE DRAIN TERMINATION AT FLOOR DRAIN SECURE IN PLACE AS REQUIRED.                         | H. PLASTIC TUBING OR PVC PIPE.                                                                                                      |
| D. FLOOR DRAIN                                                                                      | I. USE HOSE CLAMPS AT ALL CONNECTIONS WHEN USING FACTORY SUPPLIED RUBBER HOSE.                                                      |
| E. BOTTOM OF BOILER CONDENSATE OUTLET MUST BE ABOVE THE THE BOTTOM OF THE JM TUBE CONDENSATE OUTLET |                                                                                                                                     |

HIGH EFFICIENCY CONDENSING BOILER SCHEDULE															
UNIT NUMBER	UNIT LOCATION	INPUT (MBH)	OUTPUT (MBH)	FUEL	GAS PRESSURE MIN-MAX	SUPPLY WATER TEMP	RETURN WATER TEMP	WATER FLOW MIN-MAX (GPM)	WATER VOLUME (GAL)	VENT SIZE	BOILER TURN DOWN	NOx EMISSIONS	ELECTRICAL	THERMAL EFFICIENCY	REMARKS
B-1	BOILER ROOM	1500	1425	NAT. GAS	4" - 14" WC	180°F.	160°F.	25-250	34	6"	20:1	< 20 PPM	120V/60/1PH	95.0	1, 2, 3 & 4
B-2	BOILER ROOM	1500	1425	NAT. GAS	4" - 14" WC	180°F.	160°F.	25-250	34	6"	20:1	< 20 PPM	120V/60/1PH	95.0	1, 2, 3 & 4

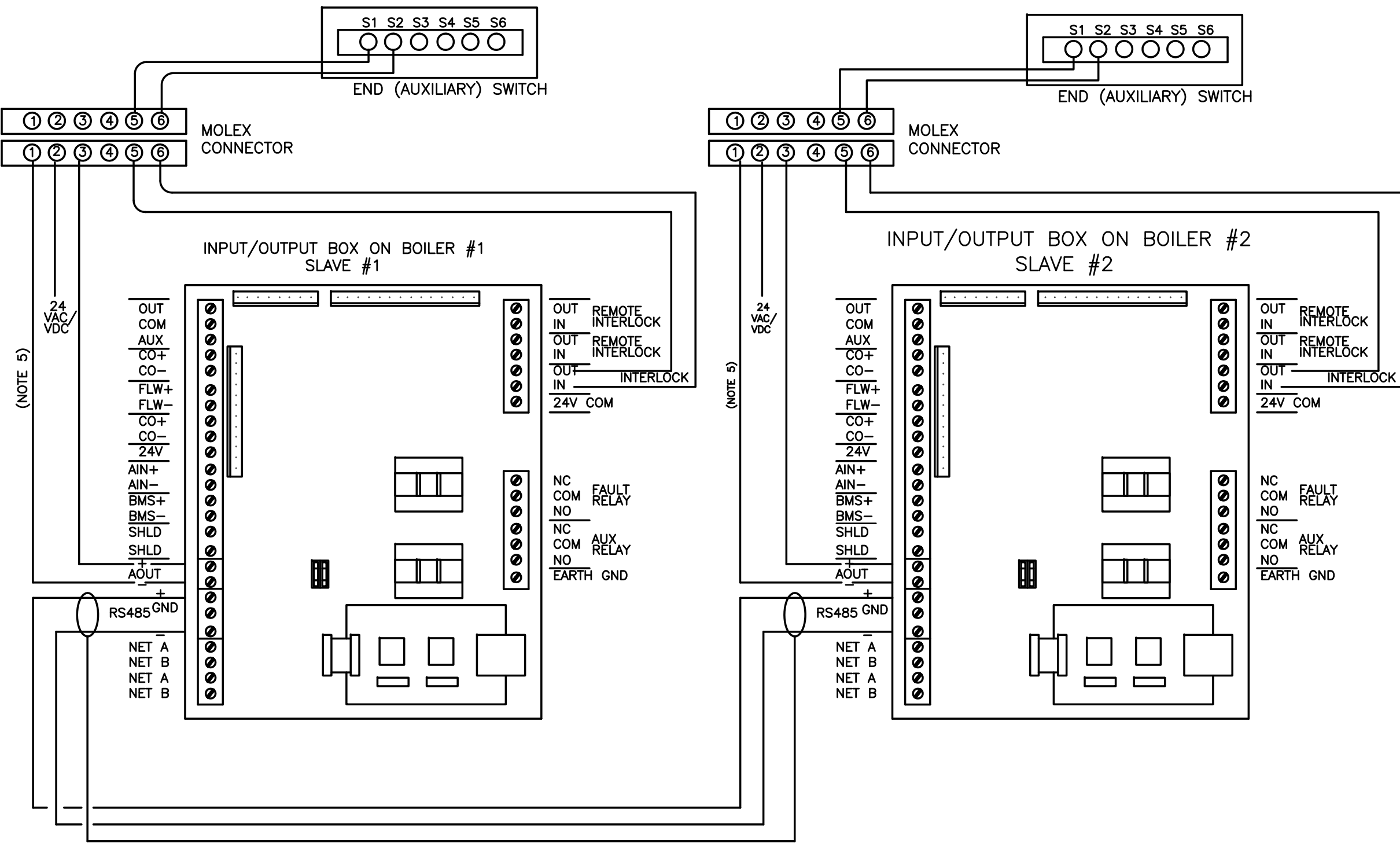
1. PROVIDE WITH ON-BOARD FACTORY BOILER MANAGEMENT SYSTEM, AERCO BST.  
2. PROVIDE WITH POLYPROPYLENE, OR AL29-4C STAINLESS STEEL VENTING PER UL1738  
3. PROVIDE WITH CONDENSATE NEUTRALIZATION TUBE EQUAL TO JM-20.  
4. PROVIDE MUFLER IN EXHAUST PIPE (TYPICAL FOR 2).



BENCHMARK 1500 BOILERS  
HORIZONTAL EXHAUST VENTING DETAIL  
N.T.S.

SYMBOL	FIXTURE TYPE	FIXTURE SPECIFICATIONS	COMMENTS
P1	WATER CLOSET ADA ACCESSIBLE	WATER CLOSET SHALL BE "KOHLER" KINGSTON MODEL #K-3423, ADA WALL HUNG VITREOUS CHINA WITH ELONGATED BOWL AND WHITE KOHLER STRONGHOLD COMMERCIAL TOILET SEAT #K-4731-C. FLUSH VALVE SHALL BE SLOAN ROYAL MODEL #111-1.28. CARRIER SHALL BE ZURN ADJUSTABLE VERTICAL MODEL #1200 SERIES.	WALL HUNG SET AT PROPER HEIGHT FOR ADA
P2	LAVATORY ADA ACCESSIBLE	LAVATORY SHALL BE KOHLER "GREENWICH" VITREOUS CHINA #K-2032 20" X 18" WALL MOUNTED WITH 4" FAUCET CENTERS. FAUCET SHALL BE "SYMMONS" SYMMETREX #S-20-G-FR-VP-W. SUPPLIES SHALL BE #K-7607. TRAP SHALL BE #K-9000. LAVATORY REQUIRES OFF-SET DRAIN NUMBER K-13885. INSULATE TRAP AND SUPPLIES BELOW LAVATORY WITH "HANDI LAV-GUARD" PRE-FORMED INSULATING KIT AS MANUFACTURED BY TRU BRO. INC. SET LAV AT PROPER HEIGHT FOR HANDICAPPED. LAVATORY SHALL BE SUPPORTED ON PROPER BLOCKING IN WALL.	MOUNT FIXTURE AT PROPER HEIGHT FOR ADA
P3	SHOWER STALL ADA ACCESSIBLE	SHOWER STALLS SHALL BE PREFABRICATED MODULES AS MANUFACTURED BY STERLING PLUMBING GROUP, INC. UNIT SHALL BE MADE OF SOLID "VIRELL" COMPRESSION MOLDED FIBERGLAS REINFORCED RESIN. MODULES SHALL BE MADE UP OF FOUR (4) PIECE SHOWER STALLS. FINISH SHALL BE HIGH GLOSS COLOR SHALL BE SELECTED BY ARCHITECT. SHOWER STALL SHALL BE MODEL #62500115ADA, 39-3/8"X39-38"X72" RIGHT OR LEFT HAND AS REQUIRED. SHOWER ASSEMBLY SHALL BE "SYMMONS" TEMPTROL #66-500-830-1-V1. PRESSURE-BALANCING MIXING VALVE WITH INTEGRAL STOPS, SINGLE BLADE HANDLE AND ADJUSTABLE STOP SCREW TO LIMIT HANDLE TURN, LEVERTOL 4-488 DIVERTER. SHOWER HEAD WITH ARM AND FLANGE. SHOWER HEAD MUST HAVE 1.5 G.P.M. FLOW RESTRICTOR. WALL/HAND SHOWER WITH FLEXIBLE METAL HOSE, IN-LINE VACUUM BREAKER, WALL CONNECTION AND FLANGE 30" SLIDE BAR FOR HAND SHOWER MOUNTING. PROVIDE FACTORY INSTALLED STAINLESS STEEL GRAB BARS AND FOLDING SEAT. NOTE RIGHT OR LEFT HAND UNIT REQUIREMENTS INDICATED ON DRAWINGS. SHOWER UNIT MUST BE SET IN A MUD BASE AND EVENLY SUPPORTED FOR ITS ENTIRE LENGTH AND WIDTH FOR PROPER INSTALLATION.	STERLING IS A "KOHLER" CO.
P4	SHOWER STALL	SHOWER STALLS SHALL BE PREFABRICATED MODULES AS MANUFACTURED BY STERLING PLUMBING GROUP, INC. UNIT SHALL BE MADE OF SOLID "VIRELL" COMPRESSION MOLDED FIBERGLAS REINFORCED RESIN. MODULES SHALL BE MADE UP OF FOUR (4) PIECE SHOWER STALLS. FINISH SHALL BE HIGH GLOSS COLOR SHALL BE SELECTED BY ARCHITECT. SHOWER STALL SHALL BE MODEL #6200100, 36"X34"X73.25" RIGHT OR LEFT HAND AS REQUIRED. SHOWER ASSEMBLY SHALL BE "SYMMONS" TEMPTROL #66-1-X1 PRESSURE-BALANCING MIXING VALVE WITH INTEGRAL STOPS, SINGLE BLADE HANDLE AND ADJUSTABLE STOP. SHOWER HEAD WITH ARM AND FLANGE. SHOWER VALVES TO BE MOUNTED AT 48" A.F.F. AS SHOWN IN MANUFACTURER'S INSTRUCTIONS. SHOWER HEADS MUST HAVE 1.5 G.P.M.FLOW RESTRICTOR. SHOWER UNIT MUST BE SET IN A MUD BASE AND EVENLY SUPPORTED FOR ITS ENTIRE LENGTH AND WIDTH FOR PROPER INSTALLATION.	STERLING IS A "KOHLER" CO.
P5	FLOOR RECEPTER	FLOOR RECEPTER SHALL BE FIAT MOLDED STONE MOP SERVICE BASIN #MSB 2424, 24" X 24" X 10", #830-AA SERVICE FAUCET WITH INTEGRAL VACUUM BREAKER, #889-CC MOP HANGER, #E-88-AA BUMPER GUARD, #832-AA HOSE AND HOSE BRACKET.	FAUCET CONTAINS VACUUM BREAKER
P6	HAND WASHING LAVATORY	LAVATORY SHALL BE KOHLER "GREENWICH" VITREOUS CHINA #K-2032 20" X 18" WALL MOUNTED WITH 4" FAUCET CENTERS. FAUCET SHALL BE "ELKAY" MODEL #LK406GNO08L2 GOOSENECK FAUCET WITH LEVER HANDLES. PROVIDE SEMI-CAST TRAP AND FLEX RISERS. LAVATORY SHALL BE SUPPORTED ON PROPER BLOCKING IN WALL.	STAND LAVATORY

FIXTURE NOTES:  
1. INCLUDED SHALL BE PLUMBING FIXTURES NOTED, ALL TRIM ITEMS AND ALL ACCESSORY ITEMS SHOWN OR REQUIRED FOR A COMPLETE INSTALLATION. UNLESS NOTED OTHERWISE.  
2. THE FIXTURES SHALL BE COMPLETE WITH CHROME PLATING ON EXPOSED IRON OR PIPE, TRAPS, ANCHOR BOLTS, HANGERS, STRAINERS, LOOSE KEY STOP VALVES AT EVERY FIXTURE, FAUCET AND OTHER INCIDENTAL ITEMS FURNISHED AS STANDARD. UNLESS NOTES OTHERWISE KOHLER NUMBERS ARE SPECIFIED.  
3. ALL FIXTURES ARE TO BE FIRST QUALITY, FREE OF CRACKS, BLEMISHES, OR OTHER IMPERFECTIONS AND TO BE "ACID RESISTING" QUALITY. SET AND PROPERLY CONNECT ALL FIXTURES WITH HOT AND COLD WATER, VENT AND DRAINAGE PIPING AND OTHER SERVICES AS REQUIRED AND PROTECT FIXTURES UNTIL FINAL ACCEPTANCE AND TEST.  
4. THE PLUMBING CONTRACTOR SHALL FURNISH, SET AND CONNECT ALL FIXTURES AND ACCESSORIES SHOWN AND SPECIFIED TO FULLY COMPLETE THE PLUMBING INSTALLATION.



BENCHMARK ONBOARD BOILER SEQUENCING TECHNOLOGY  
WITH FIELD WIRING DIAGRAM 2 BOILERS  
N.T.S.



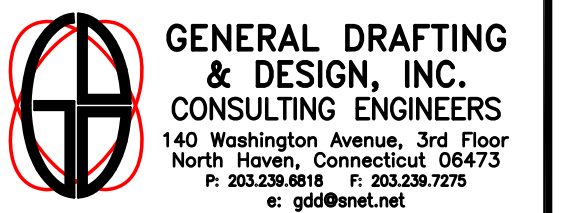
ANTINOZZI ASSOCIATES  
ARCHITECTURE & INTERIORS

COPYRIGHT 2017 BY:  
ANTINOZZI ASSOCIATES, P.C.  
271 Fairfield Avenue  
Bridgeport, Connecticut 06604  
Tel: (203) 377-1300  
Fax: (203) 378-3002

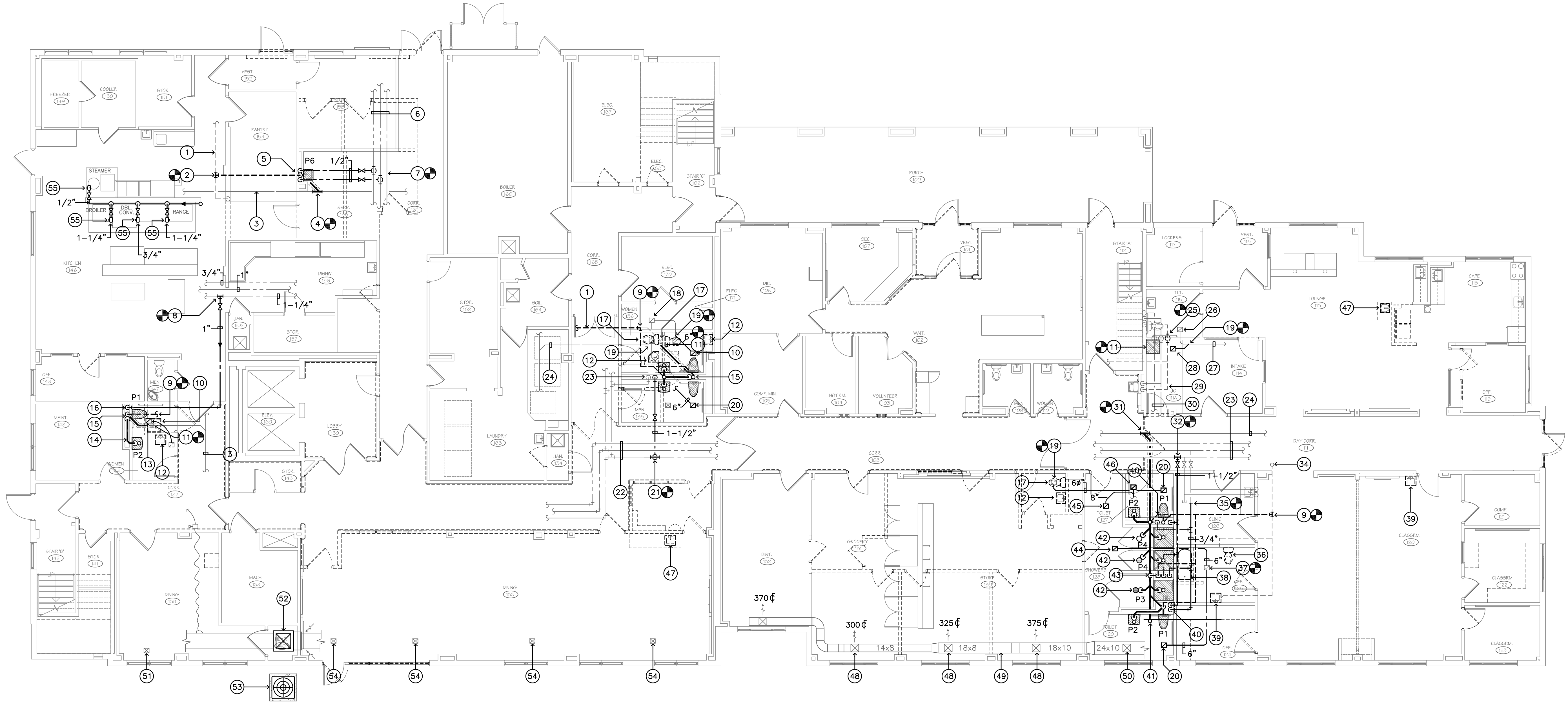
301 Merritt 7  
Norwalk, Connecticut 06851  
Tel: (203) 956-5460 www.antinozzi.com

These documents have been prepared specifically for this project. Reproduction or other use of these documents is prohibited without the approval of the Engineer.

CONSULTANT:



REVISIONS	DATE	DESCRIPTION



FIRST FLOOR PLAN – MECHANICAL  
SCALE: 1/8" = 1'-0" NORTH

**LEGEND**

- |                                                                                                                                                                                                                                                                                                                                                                                                                                                                                                                                                                                                                                                                                                                                                                                                                                                                                                                                                                                                                                                                                                                                                                                                                                                                                                                                                                                                                                                                                                                                                                                                                                                                                                    |                                                                                                                                                                                                                                                                                                                                                                                                                                                                                                                                                                                                                                                                                                                                                                                                                                                                                                                                                                                                                                                                                                                                                                                                                                                                                                                                                                                                                                                                                                                                                                                                                                                                                                                           |                                                                                                                                                                                                                                                                                                                                                                                                                                                                                                                                                                                                                                                                                                                                                                                                                                                                                                                                                                                                                                                                                                                                                                                                                                                                                                                                                                                                                                                                                                                                                                                                                                                                                                                                                     |
|----------------------------------------------------------------------------------------------------------------------------------------------------------------------------------------------------------------------------------------------------------------------------------------------------------------------------------------------------------------------------------------------------------------------------------------------------------------------------------------------------------------------------------------------------------------------------------------------------------------------------------------------------------------------------------------------------------------------------------------------------------------------------------------------------------------------------------------------------------------------------------------------------------------------------------------------------------------------------------------------------------------------------------------------------------------------------------------------------------------------------------------------------------------------------------------------------------------------------------------------------------------------------------------------------------------------------------------------------------------------------------------------------------------------------------------------------------------------------------------------------------------------------------------------------------------------------------------------------------------------------------------------------------------------------------------------------|---------------------------------------------------------------------------------------------------------------------------------------------------------------------------------------------------------------------------------------------------------------------------------------------------------------------------------------------------------------------------------------------------------------------------------------------------------------------------------------------------------------------------------------------------------------------------------------------------------------------------------------------------------------------------------------------------------------------------------------------------------------------------------------------------------------------------------------------------------------------------------------------------------------------------------------------------------------------------------------------------------------------------------------------------------------------------------------------------------------------------------------------------------------------------------------------------------------------------------------------------------------------------------------------------------------------------------------------------------------------------------------------------------------------------------------------------------------------------------------------------------------------------------------------------------------------------------------------------------------------------------------------------------------------------------------------------------------------------|-----------------------------------------------------------------------------------------------------------------------------------------------------------------------------------------------------------------------------------------------------------------------------------------------------------------------------------------------------------------------------------------------------------------------------------------------------------------------------------------------------------------------------------------------------------------------------------------------------------------------------------------------------------------------------------------------------------------------------------------------------------------------------------------------------------------------------------------------------------------------------------------------------------------------------------------------------------------------------------------------------------------------------------------------------------------------------------------------------------------------------------------------------------------------------------------------------------------------------------------------------------------------------------------------------------------------------------------------------------------------------------------------------------------------------------------------------------------------------------------------------------------------------------------------------------------------------------------------------------------------------------------------------------------------------------------------------------------------------------------------------|
| <p>1 APPROXIMATE LOCATION OF EXISTING 2" VENT PIPING ABOVE CEILING.</p> <p>2 CONNECT NEW 1-1/2" VENT TO EXISTING VENT LINE ABOVE CEILING.</p> <p>3 APPROXIMATE LOCATION OF EXISTING 3" WASTE LINE BELOW FLOOR.</p> <p>4 CONNECT NEW 2" WASTE LINE TO EXISTING BELOW FLOOR.</p> <p>5 1/2" HOT AND COLD WATER DOWN, 1-1/2" VENT UP AND 2" WASTE DOWN INTO FLOOR.</p> <p>6 APPROXIMATE LOCATION OF EXISTING 3" COLD, 2-1/2" HOT AND 3/4" HOT WATER RECIRC. PIPING.</p> <p>7 CONNECT NEW 1/2" HOT AND COLD WATER PIPING TO EXISTING.</p> <p>8 CONNECT NEW 1" COLD WATER TO EXISTING 1-1/4" ABOVE CEILING.</p> <p>9 CONNECT NEW 2" VENT TO EXISTING ABOVE CEILING.</p> <p>10 REMOVE AND DISCARD EXISTING SERVICE SINK AND ALL ASSOCIATED HOT, COLD WASTE AND VENT PIPING. REMOVE ALL PIPING IN WALLS TO BE DEMOLISHED.</p> <p>11 CONNECT NEW 3" SANITARY PIPING TO EXISTING BELOW FLOOR.</p> <p>12 REMOVE AND DISCARD EXISTING WALL HUNG LAVATORY AND ALL ASSOCIATED HOT, COLD, WASTE AND VENT PIPING. REMOVE ALL PIPING IN WALLS TO BE DEMOLISHED.</p> <p>13 ADJUST LOCATION OF EXISTING EXHAUST GRILLE. LOCATE IN NEW TOILET ROOM, EXTEND DUCTWORK AS REQUIRED (70 C.F.M.).</p> <p>14 1-1/2" WASTE LINE IN PIPE CHASE. EXTEND 1/2" HOT WATER TO LAVATORY FROM EXISTING ABOVE CEILING.</p> <p>15 3" SANITARY DOWN AND 2" VENT UP.</p> <p>16 1" COLD WATER DOWN IN PIPE CHASE.</p> <p>17 REMOVE AND DISCARD EXISTING WATER CLOSET AND ALL ASSOCIATED COLD WATER, SANITARY AND VENT PIPING. REMOVE ALL PIPING IN WALLS TO BE DEMOLISHED.</p> <p>18 EXISTING 6"x6" EXHAUST RISER.</p> <p>19 CONNECT NEW 6" DIA. EXHAUST DUCTWORK TO EXISTING.</p> <p>20 NEW 8"x8" CEILING EXHAUST GRILLE (70 C.F.M.).</p> | <p>21 CONNECT NEW 1-1/2" COLD WATER TO EXISTING 2-1/2" ABOVE SUSPENDED CEILING.</p> <p>22 APPROXIMATE LOCATION OF EXISTING 2-1/2" COLD, 2" HOT AND 3/4" RECIRC. HOT WATER.</p> <p>23 1/2" HOT AND COLD WATER DOWN IN PIPE CHASE.</p> <p>24 APPROXIMATE LOCATION OF EXISTING 4" SANITARY LINE BELOW FLOOR.</p> <p>25 CONNECT TO EXISTING PIPING AND DROP 1/2" HOT, COLD AND 1-1/2" VENT DOWN IN PARTITION.</p> <p>26 EXISTING EXHAUST GRILLE TO REMAIN.</p> <p>27 EXISTING 6"x6" EXHAUST DUCTWORK.</p> <p>28 NEW 6"x6" CEILING EXHAUST GRILLE (50 C.F.M.).</p> <p>29 EXISTING VENT PIPING ABOVE CEILING.</p> <p>30 EXISTING HOT AND COLD WATER ABOVE CEILING.</p> <p>31 CONNECT NEW 4" SANITARY PIPING TO EXISTING BELOW FLOOR.</p> <p>32 CONNECT NEW 1-1/2" COLD WATER TO EXISTING 2" ABOVE SUSPENDED CEILING.</p> <p>33 APPROXIMATE LOCATION OF EXISTING 2" COLD, 1" HOT AND 3/4" RECIRC. HOT WATER.</p> <p>34 EXISTING 3" VENT THROUGH ROOF.</p> <p>35 CONNECT NEW 3/4" HOT WATER TO EXISTING.</p> <p>36 REMOVE AND DISCARD EXISTING WATER CLOSET AND ASSOCIATED COLD WATER, VENT AND SANITARY PIPING. CAP AND MAKE SAFE ALL UNUSED PIPING BEHIND FINISHED SURFACES.</p> <p>37 EXISTING 10"x10" EXHAUST RISER UP. CONNECT TWO NEW 6" DIA. EXHAUST DUCTS TO RISER.</p> <p>38 REMOVE AND DISCARD EXISTING TUB AND ALL ASSOCIATED HOT, COLD, WASTE AND VENT PIPING. CAP AND MAKE SAFE ALL UNUSED PIPING BEHIND FINISHED SURFACES.</p> <p>39 REMOVE AND DISCARD EXISTING LAVATORY ASSOCIATED HOT, COLD, WASTE AND VENT PIPING. CAP AND MAKE SAFE ALL UNUSED PIPING BEHIND FINISHED SURFACES.</p> <p>40 1/2" HOT AND 1-1/4" COLD WATER DOWN, 2" VENT UP AND 3" SANITARY DOWN INTO FLOOR.</p> <p>41 FLUSH FLOOR CLEANOUT.</p> | <p>42 2" FLOOR DRAIN (IN SHOWER DRYING AREA).</p> <p>43 1/2" HOT AND COLD WATER DOWN AND 2" VENT UP.</p> <p>44 NEW 8"x8" CEILING EXHAUST GRILLE (120 C.F.M.).</p> <p>45 NEW 8"x8" CEILING SUPPLY REGISTER (170 C.F.M.).</p> <p>46 EXISTING SUPPLY REGISTER REDUCE AIR SUPPLY TO 65 C.F.M.</p> <p>47 REMOVE AND DISCARD EXISTING COUNTER SINK AND ALL ASSOCIATED HOT, COLD, WASTE AND VENT PIPING. REMOVE ALL PIPING IN WALLS TO BE DEMOLISHED. CAP AND MAKE SAFE ALL UNUSED PIPING BEHIND FINISHED SURFACES.</p> <p>48 ADJUST LOCATION OF EXISTING SUPPLY DIFFUSER AND ASSOCIATED DUCTWORK TO SUIT NEW REFLECTED CEILING LAYOUT. ADJUST AIR FLOW TO C.F.M. NOTED.</p> <p>49 EXISTING TRUNK DUCTWORK TO REMAIN IN SERVICE.</p> <p>50 BLANK-OFF EXISTING SUPPLY DIFFUSER AIR TIGHT.</p> <p>51 EXISTING CEILING SUPPLY DIFFUSERS TO REMAIN.</p> <p>52 REMOVE AND DISCARD EXISTING 5 TON UNIT AIR HANDLING UNIT AND REPLACE WITH NEW "ENVIRCO-TEC" MODEL VE SERIES "C" UNIT SIZE 20 VERTICAL BELT DRIVE BLOWER COIL UNIT WITH FIELD INSTALLED PLENUM. NEW BLOWER COIL TO BE TIED INTO EXISTING SUPPLY AND RETURN DUCTWORK. BOILER COIL TO BE WIRED FOR 208V, 1PH SERVICE.</p> <p>53 REMOVE AND DISCARD EXISTING 5 TON CONDENSING UNIT AND REPLACE WITH NEW "DAIKIN" OUTDOOR UNIT MODEL # DX13SA0603 WIRED FOR 208V, 3PH SERVICE. SET NEW CONDENSING UNIT ON NEW CONCRETE BASE. PROVIDE AND INSTALL NEW REFRIGERANT LINE SETS.</p> <p>54 ADJUST LOCATION OF EXISTING SUPPLY DIFFUSER AND ASSOCIATED DUCTWORK TO SUIT NEW REFLECTED CEILING LAYOUT.</p> <p>55 PROVIDE AND INSTALL A GAS PRESSURE REGULATOR ON EACH PIECE OF KITCHEN EQUIPMENT. REGULATORS SHALL BE EQUAL TO MAXITROL #325 SERIES WITH 2 P.S.I. INLET PRESSURE AND 6" OUTLET PRESSURE.</p> |
|----------------------------------------------------------------------------------------------------------------------------------------------------------------------------------------------------------------------------------------------------------------------------------------------------------------------------------------------------------------------------------------------------------------------------------------------------------------------------------------------------------------------------------------------------------------------------------------------------------------------------------------------------------------------------------------------------------------------------------------------------------------------------------------------------------------------------------------------------------------------------------------------------------------------------------------------------------------------------------------------------------------------------------------------------------------------------------------------------------------------------------------------------------------------------------------------------------------------------------------------------------------------------------------------------------------------------------------------------------------------------------------------------------------------------------------------------------------------------------------------------------------------------------------------------------------------------------------------------------------------------------------------------------------------------------------------------|---------------------------------------------------------------------------------------------------------------------------------------------------------------------------------------------------------------------------------------------------------------------------------------------------------------------------------------------------------------------------------------------------------------------------------------------------------------------------------------------------------------------------------------------------------------------------------------------------------------------------------------------------------------------------------------------------------------------------------------------------------------------------------------------------------------------------------------------------------------------------------------------------------------------------------------------------------------------------------------------------------------------------------------------------------------------------------------------------------------------------------------------------------------------------------------------------------------------------------------------------------------------------------------------------------------------------------------------------------------------------------------------------------------------------------------------------------------------------------------------------------------------------------------------------------------------------------------------------------------------------------------------------------------------------------------------------------------------------|-----------------------------------------------------------------------------------------------------------------------------------------------------------------------------------------------------------------------------------------------------------------------------------------------------------------------------------------------------------------------------------------------------------------------------------------------------------------------------------------------------------------------------------------------------------------------------------------------------------------------------------------------------------------------------------------------------------------------------------------------------------------------------------------------------------------------------------------------------------------------------------------------------------------------------------------------------------------------------------------------------------------------------------------------------------------------------------------------------------------------------------------------------------------------------------------------------------------------------------------------------------------------------------------------------------------------------------------------------------------------------------------------------------------------------------------------------------------------------------------------------------------------------------------------------------------------------------------------------------------------------------------------------------------------------------------------------------------------------------------------------|

**JOEL SMILOW CARE CENTER OF  
THE BRIDGEPORT RESCUE MISSION**  
 INTERIOR RENOVATIONS  
 725 PARK AVENUE  
 BRIDGEPORT, CONNECTICUT

DRAWING TITLE:		
<b>FIRST FLOOR PLAN - MECHANICAL</b>		
SCALE:	DRAWN BY:	REVIEWED BY:
1/8"=1'-0"	BIC	GDD
DRAWING NO.:		

M-5

DATE: 07 MAY 2019 GDD JOB NUMBER: 19469



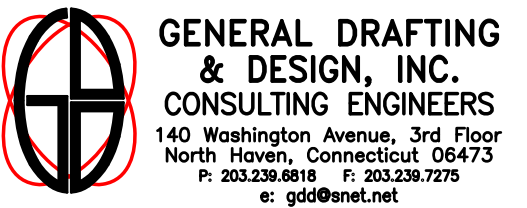
ANTINOZZI ASSOCIATES  
ARCHITECTURE & INTERIORS

COPYRIGHT 2017 BY:  
ANTINOZZI ASSOCIATES, P.C.  
271 Fairfield Avenue  
Bridgeport, Connecticut 06604  
Tel: (203) 377-1300  
Fax: (203) 378-3002

301 Merritt 7  
Norwalk, Connecticut 06851  
Tel: (203) 956-5460 www.antinozzi.com

These documents have been prepared specifically for this project. Reproduction or other use of these documents is prohibited without the approval of the Engineer.

CONSULTANT:



REVISIONS  
DATE DESCRIPTION

REVISIONS	DATE	DESCRIPTION

JOEL SMILOW CARE CENTER OF  
THE BRIDGEPORT RESCUE MISSION  
INTERIOR RENOVATIONS  
725 PARK AVENUE  
BRIDGEPORT, CONNECTICUT

DRAWING TITLE:  
FIRST FLOOR PLAN  
- FIRE PROTECTION

SCALE: 1/8"=1'-0" DRAWN BY: BIC REVIEWED BY: GDD

DRAWING NO.

M-6

DATE: 07 MAY 2019 GDD JOB NUMBER: 19469



FIRST FLOOR PLAN – FIRE PROTECTION  
SCALE: 1/8" = 1'-0" NORTH

**EXISTING SPRINKLER NOTE:**  
THE BUILDING IS FULLY SPRINKLERED THROUGHOUT THE BUILDING ALONG WITH A FIRE PUMP AND EXISTING HEADS ARE NOT SHOWN. IN AREAS BEING RENOVATED AND NEW PARTITIONS ARE BEING INSTALLED NEW SEMI-RECESSED CHROME PENDANT SPRINKLER HEADS ARE SHOWN ON PLANS IN NEW LOCATIONS. EXISTING SPRINKLER HEADS TO BE REMOVED, EXTEND EXISTING BRANCH PIPING TO NEW LOCATION AND INSTALL NEW SEMI-RECESSED SPRINKLER HEAD IN NEW SUSPENDED CEILING.

**SPRINKLER ESCUTCHEON COVER NOTE:**  
INSTALL NEW WHITE ESCUTCHEON COVER PLATES AS REQUIRED WHERE MISSING.

**LEGEND**

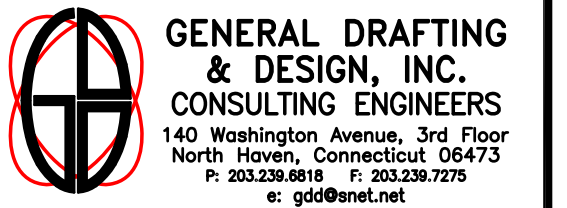
- ① EXISTING 40 H.P. FIRE PUMP LOCATED IN BOILER ROOM TO REMAIN.
- ② NEW SPRINKLER HEAD IN NEW LOCATION, TYPICAL.

**SPRINKLER SYMBOLS**

- - NEW SEMI-RECESSED CHROME PENDANT SPRINKLER HEAD. CONNECT TO EXISTING PIPING. EXTEND BRANCH PIPING OR CROSS MAIN AS NECESSARY TO SUIT NEW LAYOUT. MODIFY AS REQUIRED.



CONSULTANT:



REVISIONS:

NO.	DATE	DESCRIPTION

JOEL SMILOW CARE CENTER OF  
THE BRIDGEPORT RESCUE MISSION  
INTERIOR RENOVATIONS  
725 PARK AVENUE  
BRIDGEPORT, CONNECTICUT

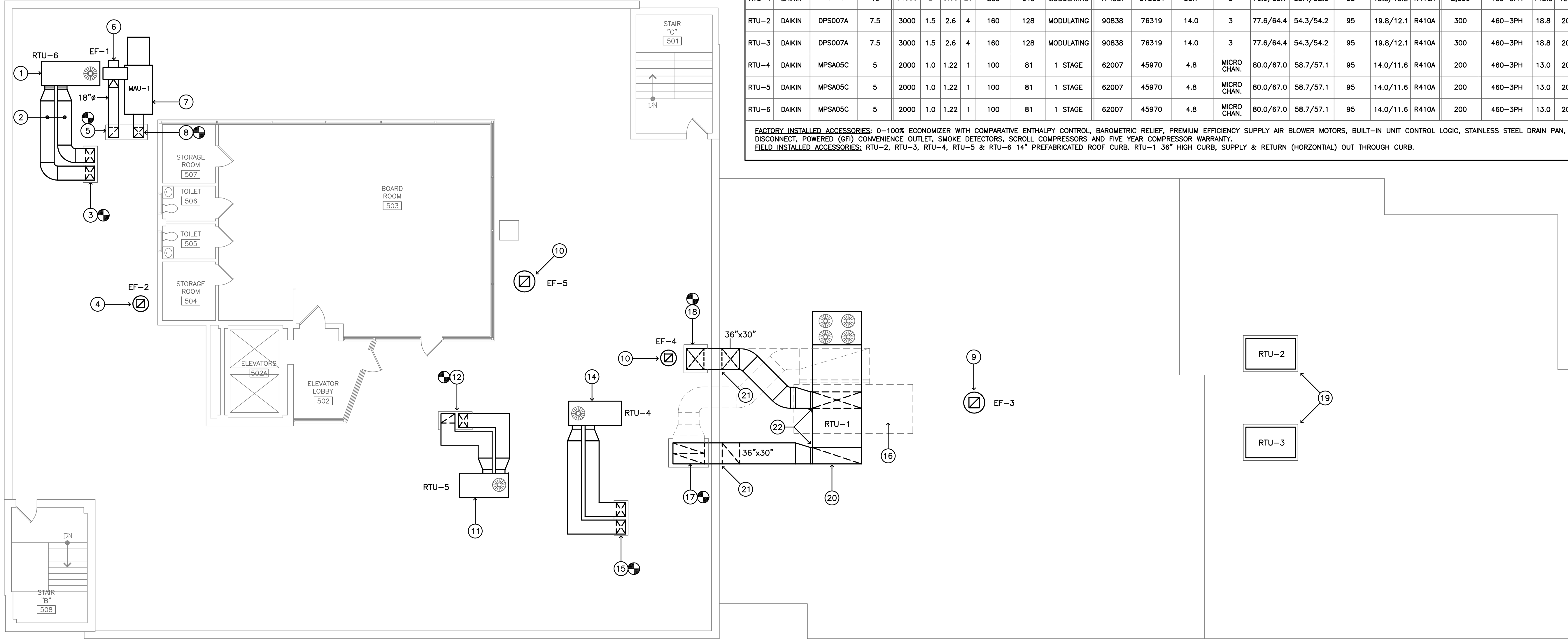
ROOF PLAN -  
MECHANICAL

SCALE:	DRAWN BY:	REVIEWED BY:
1/8"=1'-0"	BIC	GDD
DRAWING NO.:	M-7	
DATE:	GDD JOB NUMBER:	
07 MAY 2019	19469	

ROOFTOP UNIT SCHEDULE

SYMBOL	MAKE	MODEL	NOMINAL TONS	SUPPLY AIR FAN			GAS HEAT		STAGING	DX EVAPORATOR COIL							ELECTRICAL DATA			NOMINAL OPERATING WEIGHT LBS				
				CFM	ESP	TSP	HP	CAPACITY INPUT MBH		CAPACITY OUTPUT MBH	TOTAL CAPACITY NET BTUH	SENSIBLE NET BTUH	FACE AREA S.F.	COIL ROWS	EAT °F EDG/EBW	UNIT °F LDB/LWB	AMBIENT TEMP °F	IEER/EER	REFRIG. TYPE		OUTDOOR AIR CODE MINIMUM CF.M.	UNIT	VOLTAGE	MCA
RTU-1	DAIKIN	MPS040F	40	14000	2	3.50	20	800	640	MODULATING	474537	373661	35.7	6	76.9/63.7	52.4/52.0	95	13.5/10.2	R410A	2,800	460-3PH	113.0	125	5647
RTU-2	DAIKIN	DPS007A	7.5	3000	1.5	2.6	4	160	128	MODULATING	90838	76319	14.0	3	77.6/64.4	54.3/54.2	95	19.8/12.1	R410A	300	460-3PH	18.8	20	2257
RTU-3	DAIKIN	DPS007A	7.5	3000	1.5	2.6	4	160	128	MODULATING	90838	76319	14.0	3	77.6/64.4	54.3/54.2	95	19.8/12.1	R410A	300	460-3PH	18.8	20	2257
RTU-4	DAIKIN	MPSA05C	5	2000	1.0	1.22	1	100	81	1 STAGE	62007	45970	4.8	MICRO CHAN.	80.0/67.0	58.7/57.1	95	14.0/11.6	R410A	200	460-3PH	13.0	20	600
RTU-5	DAIKIN	MPSA05C	5	2000	1.0	1.22	1	100	81	1 STAGE	62007	45970	4.8	MICRO CHAN.	80.0/67.0	58.7/57.1	95	14.0/11.6	R410A	200	460-3PH	13.0	20	600
RTU-6	DAIKIN	MPSA05C	5	2000	1.0	1.22	1	100	81	1 STAGE	62007	45970	4.8	MICRO CHAN.	80.0/67.0	58.7/57.1	95	14.0/11.6	R410A	200	460-3PH	13.0	20	600

FACTORY INSTALLED ACCESSORIES: 0-100% ECONOMIZER WITH COMPARATIVE ENTHALPY CONTROL, BAROMETRIC RELIEF, PREMIUM EFFICIENCY SUPPLY AIR BLOWER MOTORS, BUILT-IN UNIT CONTROL LOGIC, STAINLESS STEEL DRAIN PAN, NON-FUSED DISCONNECT, POWERED (GF) CONVENIENCE OUTLET, SMOKE DETECTORS, SCROLL COMPRESSORS AND FIVE YEAR COMPRESSOR WARRANTY.  
FIELD INSTALLED ACCESSORIES: RTU-2, RTU-3, RTU-4, RTU-5 & RTU-6 14" PREFABRICATED ROOF CURB. RTU-1 36" HIGH CURB, SUPPLY & RETURN (HORIZONTAL) OUT THROUGH CURB.



FIFTH FLOOR PLAN - MECHANICAL

SCALE: 1/8" = 1'-0"



EXHAUST FAN SCHEDULE

SYMBOL	MAKE	MODEL	TYPE	CFM	S.P.	HP	VOLTAGE	DRIVE	RPM	TIP SPEED	SONES	EXHAUST SERVICE
EF-1	COOK	CPS195	CENTRAL VENT SET BLOWER	3815	2.5"	3	460-3PH	BELT	1425	3562	-	KITCHEN HOOD
EF-2	COOK	ACRUB 100RB2	ROOFTOP CENTRAL EXHAUST VENTILATOR	542	.375"	1/6	120-1PH	BELT	1340	3508	7.3	DISHWASHER EXHAUST
EF-3	COOK	165C3B	ROOFTOP CENTRAL EXHAUST VENTILATOR	1500	.50"	1/4	120-1PH	BELT	830	3581	6.6	TOILETS
EF-4	CONTRACTOR TO REPLACE EXISTING ROOFTOP CENTRIFUGAL EXHAUST VENTILATOR WITH NEW. VERIFY SIZE IN FIELD											
EF-5	CONTRACTOR TO REPLACE EXISTING ROOFTOP CENTRIFUGAL EXHAUST VENTILATOR WITH NEW. VERIFY SIZE IN FIELD											

EF-1-EF-5 PROVIDE NEW 12" HIGH PREFAB ROOF CURB, BACKDRAFT DAMPER, DISCONNECT SWITCH, FAN SPEED CONTROLLER (MOUNT AT UNIT FOR BALANCING ONLY)

KITCHEN EXHAUST HOOD MAKE-UP AIR UNIT

SYMBOL	MAKE	MODEL	ARRANGEMENT	MBH OUTPUT	EAT °F	LAT °F	CFM	HP	T.S.P.	FAN RPM	NATURAL GAS INPUT	VOLTAGE	MOTOR F.L.A.
MAU-1	REZNOR	RHD-225	HORIZONTAL	182.25	0	55	3050	2	1.47	1178	225 MBH	460/3/60	3.5

COMPLETE WITH ELECTRONIC IGNITION, CURB CAP, DOUBLE WALL CAP, POWER VENTED, STAINLESS STEEL HEAT EXCHANGER, ELEC. MODULATION WITH REMOTE SELECT, 2 H.P. ODP MOTOR, MOTOR CONTRACTOR, 24V. COIL, 2 POS. MOTORIZED 100% O/A DAMPER 100% O/A RAIN BAFFLED INTAKE HOOD, FILTER RACK WITH 2" PLEATED FILTERS, DOUBLE WALL INSULATED CABINET, FLUSH MTD. NONFUSED LOCKABLE DISCONNECT, RELAY STARTS UNIT FROM REMOTE CONTACTS, FURNACE COND. DRAIN, VIBRATION ISOLATION, CONTROL PANEL, DISCHARGE TEMP DIAL ON PANEL, 5 YEAR HEAT EXCHANGER WARRANTY

LEGEND

- REMOVE EXISTING "CARRIER" 5 TON ROOF TOP UNIT, ROOF CURBS AND SUPPLY AND RETURN DUCTWORK BACK TO VERTICAL DUCTWORK THROUGH ROOF. IN ITS PLACE INSTALL A NEW PACKAGED HEATING/COOLING ROOFTOP UNIT RTU-6 WITH HORIZONTAL INLET AND OUTLET DUCT CONNECTIONS. MOUNT ON FULL NEW PERIMETER ROOF CURB. PROVIDE FLEXIBLE CONNECTIONS AT INLET AND OUTLET OF UNIT. TRANSFORM TO AND RUN NEW 20"x18" I.D. SHEET METAL DUCTING SYSTEM WITH 2" RIGID BOARD INSULATION; R-8.0 MINIMUM. COVER ALL DUCT INSULATION WITH "ALUMAGUARD" ALL WEATHER INSULATION MANUFACTURED BY "POLYGUARD" WITH PEEL'N' STICK VAPOR BARRIER INSULATION JACKET AND CLADDING SYSTEMS. ALL EXTERIOR HORIZONTAL SUPPLY AND RETURN DUCTWORK SHALL BE SUPPORTED USING ROOF PRODUCTS MODEL SS-D-C GALVANIZED UNISTRUT DUCT SUPPORTS WITH 16 GAUGE STAINLESS STEEL BASES, MAXIMUM 10 FT. BETWEEN SUPPORTS.
- NEW 20"x18" INSULATED AND WEATHER PROOFED SUPPLY AND RETURN DUCTWORK SUPPORTED ABOVE ROOF.
- CONNECT NEW 20"x18" DUCTWORK TO EXISTING VERTICAL DUCTWORK. ALL CONNECTIONS TO BE WEATHER TIGHT.
- REMOVE EXISTING EXHAUST FAN AND ROOF CURB INSTALL NEW EXHAUST FAN EF-2 (DISHWASHER EXHAUST) AND NEW CURB. CONNECT TO EXISTING DUCTWORK.
- CONNECT NEW KITCHEN HOOD EXHAUST DUCTWORK TO EXISTING. ALL CONNECTIONS TO BE WEATHER TIGHT.
- REMOVE EXISTING 3800 C.F.M. KITCHEN HOOD EXHAUST UTILITY SET AND ASSOCIATED EXHAUST DUCTWORK BACK TO VERTICAL DUCTWORK THROUGH ROOF. IN ITS PLACE INSTALL A NEW EXHAUST FAN EF-1 WITH NEW 18" DIA. EXHAUST DUCT WORK, DUCTWORK TO BE NO. 16 GAUGE WELDED BLACK STEEL OR 18 GAUGE STAINLESS STEEL, AND PROTECTED FROM CORROSION. PROVIDE FLEXIBLE CONNECTION AT THE FAN INLET LISTED AND LABELED FOR THE APPLICATION.
- REMOVE EXISTING "REZNOR" MAKE-UP AIR UNIT, ROOF CURB AND SUPPLY AIR DUCTWORK. IN ITS PLACE INSTALL A NEW "REZNOR" GAS FIRED MAKE-UP AIR UNIT MAU-1 ON NEW FULL PREMIER ROOF CURB. PROVIDE FLEXIBLE CONNECTION ON OUTLET OF UNIT. TRANSFORM TO AND RUN NEW 20"x18" I.D. SHEET METAL DUCTING SYSTEM WITH 2" RIGID BOARD INSULATION; R-8.0 MINIMUM. COVER ALL DUCT INSULATION WITH "ALUMAGUARD" ALL WEATHER INSULATION MANUFACTURED BY "POLYGUARD" WITH PEEL'N' STICK VAPOR BARRIER INSULATION JACKET AND CLADDING SYSTEMS.
- CONNECT NEW MAKE-UP AIR SUPPLY DUCTWORK TO EXISTING. ALL CONNECTIONS TO BE WEATHER TIGHT.
- REMOVE EXISTING EXHAUST FAN AND ROOF CURB, INSTALL NEW EXHAUST FAN EF-3 (TOILET ROOM EXHAUST) AND ROOF CURB. CONNECT TO EXISTING DUCTWORK.
- REMOVE AND REPLACE EXISTING EXHAUST FAN EF-4 AND EF-5 AND ASSOCIATED ROOF CURB WITH NEW EXHAUST FANS AND ROOF CURBS. EXISTING C.F.M. AND H.P. OF EACH FAN MUST BE DETERMINED IN FIELD.
- REMOVE EXISTING "CARRIER" 5 TON ROOF TOP UNIT, ROOF CURBS AND SUPPLY AND RETURN DUCTWORK BACK TO VERTICAL DUCTWORK THROUGH ROOF. IN ITS PLACE INSTALL A NEW PACKAGED HEATING/COOLING ROOFTOP UNIT RTU-5 WITH HORIZONTAL INLET AND OUTLET OF UNIT. TRANSFORM TO AND RUN NEW 20"x12" I.D. SHEET METAL DUCTING SYSTEM WITH 2" RIGID BOARD INSULATION; R-8.0 MINIMUM. COVER ALL DUCT INSULATION WITH "ALUMAGUARD" ALL WEATHER INSULATION MANUFACTURED BY "POLYGUARD" WITH PEEL'N' STICK VAPOR BARRIER INSULATION JACKET AND CLADDING SYSTEMS. ALL EXTERIOR HORIZONTAL SUPPLY AND RETURN DUCTWORK SHALL BE SUPPORTED USING ROOF PRODUCTS MODEL SS-D-C GALVANIZED UNISTRUT DUCT SUPPORTS WITH 16 GAUGE STAINLESS STEEL BASES, MAXIMUM 10 FT. BETWEEN SUPPORTS.
- CONNECT NEW DUCTWORK TO EXISTING VERTICAL DUCTWORK. TRANSITION TO 28"x10" THROUGH ROOF ALL CONNECTIONS TO BE WEATHER TIGHT.
- NEW 20"x12" INSULATED AND WEATHER PROOFED SUPPLY AND RETURN DUCTWORK SUPPORTED ABOVE ROOF.
- REMOVE EXISTING "CARRIER" 5 TON ROOF TOP UNIT, ROOF CURBS AND SUPPLY AND RETURN DUCTWORK BACK TO VERTICAL DUCTWORK THROUGH ROOF. IN ITS PLACE INSTALL A NEW PACKAGED HEATING/COOLING ROOFTOP UNIT RTU-4 WITH HORIZONTAL INLET AND OUTLET DUCT CONNECTIONS. MOUNT ON FULL NEW PERIMETER ROOF CURB. PROVIDE FLEXIBLE CONNECTIONS AT INLET AND OUTLET OF UNIT. TRANSFORM TO AND RUN NEW 20"x12" I.D. SHEET METAL DUCTING SYSTEM WITH 2" RIGID BOARD INSULATION; R-8.0 MINIMUM. COVER ALL DUCT INSULATION WITH "ALUMAGUARD" ALL WEATHER INSULATION MANUFACTURED BY "POLYGUARD" WITH PEEL'N' STICK VAPOR BARRIER INSULATION JACKET AND CLADDING SYSTEMS. ALL EXTERIOR HORIZONTAL SUPPLY AND RETURN DUCTWORK SHALL BE SUPPORTED USING ROOF PRODUCTS MODEL SS-D-C GALVANIZED UNISTRUT DUCT SUPPORTS WITH 16 GAUGE STAINLESS STEEL BASES, MAXIMUM 10 FT. BETWEEN SUPPORTS.
- CONNECT NEW 20"x12" DUCTWORK TO EXISTING VERTICAL DUCTWORK. ALL CONNECTIONS TO BE WEATHER TIGHT.
- REMOVE EXISTING "CARRIER" 35 TON ROOF TOP UNIT, ROOF CURBS AND SUPPLY AND RETURN DUCTWORK BACK TO VERTICAL DUCTWORK THROUGH ROOF. IN ITS PLACE INSTALL A NEW PACKAGED HEATING/COOLING ROOFTOP UNIT RTU-1 WITH HORIZONTAL INLET AND OUTLET DUCT CONNECTIONS THROUGH ROOF CURB. MOUNT ON NEW 36" HIGH FULL PREMIER ROOF CURB. PROVIDE FLEXIBLE CONNECTIONS AT INLET AND OUTLET OF UNIT. RUN NEW SHEET METAL DUCTWORK WITH 2" RIGID BOARD INSULATION; R-8.0 MINIMUM. COVER ALL DUCT INSULATION WITH "ALUMAGUARD" ALL WEATHER INSULATION MANUFACTURED BY "POLYGUARD" WITH PEEL'N' STICK VAPOR BARRIER INSULATION JACKET AND CLADDING SYSTEMS. ALL EXTERIOR HORIZONTAL SUPPLY AND RETURN DUCTWORK SHALL BE SUPPORTED USING ROOF PRODUCTS MODEL SS-D-C GALVANIZED UNISTRUT DUCT SUPPORTS WITH 16 GAUGE STAINLESS STEEL BASES, MAXIMUM 10 FT. BETWEEN SUPPORTS.
- TRANSFORM NEW RETURN DUCTWORK TO 54"x22" THROUGH ROOF.
- TRANSFORM NEW SUPPLY DUCTWORK TO 36"x30" THROUGH ROOF.
- REMOVE EXISTING 7.5 TON ROOF TOP UNIT AND ROOF CURB, REPLACE WITH NEW 7.5 TON DOWN FLOW HEATING/COOLING ROOF TOP UNIT WITH NEW FULL PERIMETER ROOF CURB.
- NEW RTU-1 ON 36" HIGH PERIMETER ROOF CURB.
- NEW DUCTWORK TO PASS OVER TOP OF PARAPET WALL.
- HORIZONTAL SUPPLY AND RETURN DUCT CONNECTIONS THROUGH ROOF CURB, PROVIDE FLEX CONNECTIONS.

NOTE: PROVIDE AND INSTALL A GAS PRESSURE REGULATOR ON ALL ROOF TOP AND MAKE-UP AIR UNITS. REGULATOR SHALL BE EQUAL TO "MAXITROL" WITH 2 P.S.I. INLET PRESSURE AND 10" W.C. OUTLET PRESSURE.