

CEILING MOUNTED RECESSED / ELECTRIC CABINET UNIT HEATER  
 CL.G. 11'-0"  
 23.75x23.75x7H

COORDINATION SIGN OFF		
REP.	COMPANY	DATE

**SHEET NOTES:**

**PIPE INSULATION SCHEDULE**  
 1) INSULATION WILL BE 1" THICK FIBERGLASS ON CWS/CWR PIPING 3/4" THROUGH 4" INCLUSIVE.  
 2) INSERTS WILL BE PROVIDED TO PREVENT CRUSHING OF INSULATION ON MAIN PIPING 2-1/2" AND LARGER.

**PIPE SCHEDULE**  
 1) PIPING 2-1/2" AND GREATER WILL BE SCH 40 BLACK STEEL WITH GROOVED CONNECTIONS, SMALL BORE BRANCH-LINES WILL BE WELDED FIP 1/2" COUPLINGS.  
 2) PIPING 2" AND SMALLER WILL BE TYPE L COPPER WITH SOLDERED CONNECTIONS.

**PIPE HANGERS**  
 1) ALL BRANCHLINE AND MAIN HANGERS WILL BE OVERSIZED EM-LOCK HANGERS WITH SHIELDS.

NO.	REVISION	DATE

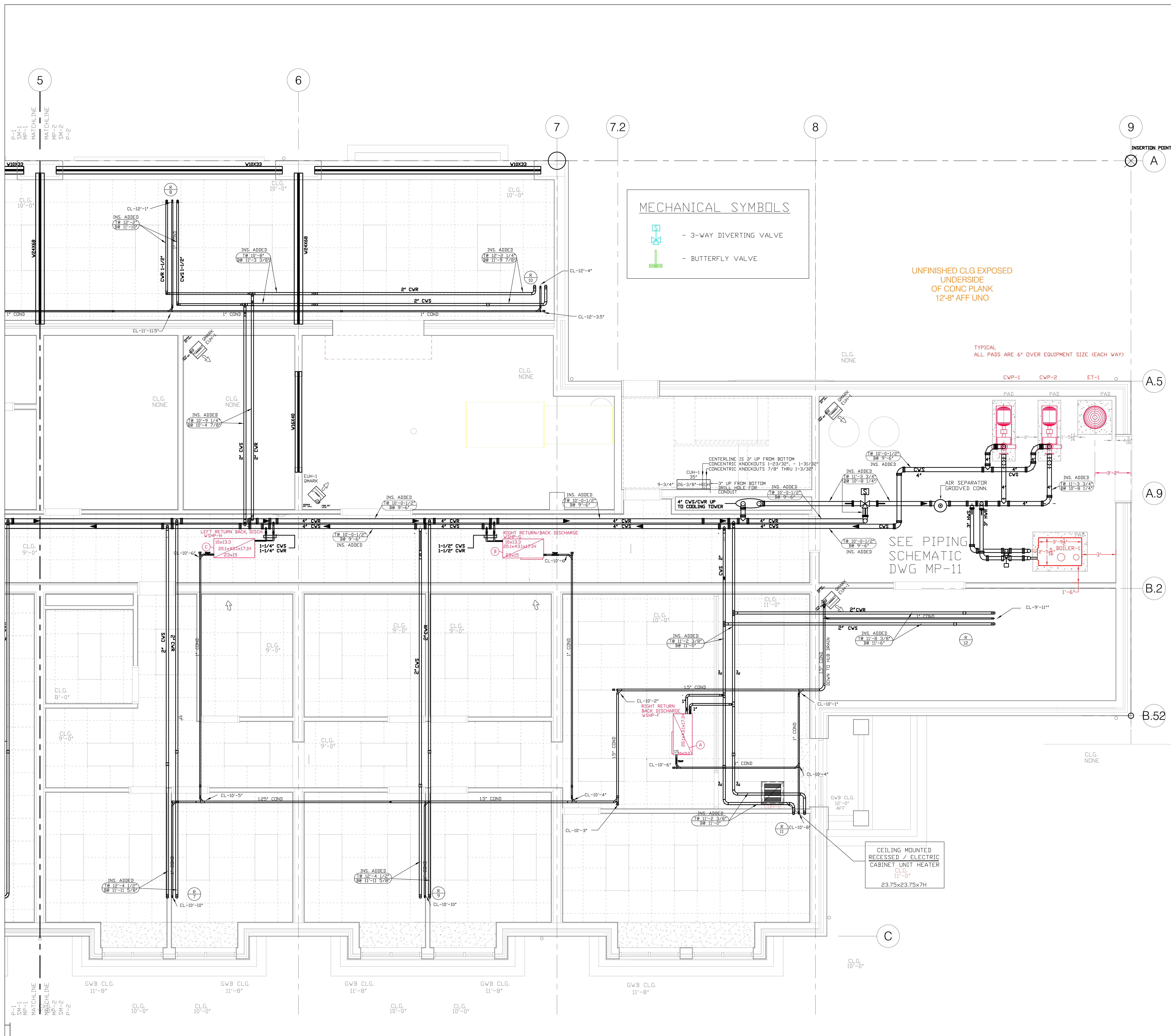
DWG. TITLE  
**FIRST FLOOR WEST SIDE OF PLAN**

PROJECT  
**POST HOUSE APARTMENTS  
 40 CLINTON AVENUE  
 STAMFORD, CT. 06901**

**EMS**  
 EASTERN MECHANICAL SERVICES, INC  
 64 TRIANGLE STREET SUITE H2  
 PO BOX 246  
 DANBURY, CT 06810

DES. BY	DWN. BY	DATE	DWG. NO.
---	SC	2/11/07	MP-1
EMS JOB NO.	CHECKED BY	SCALE	---
---	---	3/8"=1'-0"	---

UNFINISHED CLG EXPOSED UNDERSIDE OF CONC PLANK 12-6 AFF UND



**MECHANICAL SYMBOLS**

- 3-WAY DIVERTING VALVE
- BUTTERFLY VALVE

UNFINISHED CLG EXPOSED  
UNDERSIDE  
OF CONC PLANK  
12-8" AFF UNO

TYPICAL  
ALL PADS ARE 6" OVER EQUIPMENT SIZE (EACH WAY)

SEE PIPING  
SCHEMATIC  
DWG MP-11

CEILING MOUNTED  
RECESSED / ELECTRIC  
CABINET UNIT HEATER  
CLG.  
11'-0"  
23.75x23.75x7H

**COORDINATION SIGN OFF**

REP.	COMPANY	DATE

**SHEET NOTES:**

**PIPE INSULATION SCHEDULE**  
 1) INSULATION WILL BE 1" THICK FIBERGLASS ON CWS/CWR PIPING 3/4" THROUGH 4" INCLUSIVE.  
 2) INSERTS WILL BE PROVIDED TO PREVENT CRUSHING OF INSULATION ON MAIN PIPING 2-1/2" AND LARGER.

**PIPE SCHEDULE**  
 1) PIPING 2-1/2" AND GREATER WILL BE SCH 40 BLACK STEEL WITH GROOVED CONNECTIONS, SMALL BORE BRANCH-LINES WILL BE WELDED FIP 1/2 COUPLINGS.  
 2) PIPING 2" AND SMALLER WILL BE TYPE L COPPER WITH SOLDERED CONNECTIONS.

**PIPE HANGERS**  
 1) ALL BRANCHLINE AND MAIN HANGERS WILL BE OVERSIZED EM-LOCK HANGERS WITH SHIELDS.

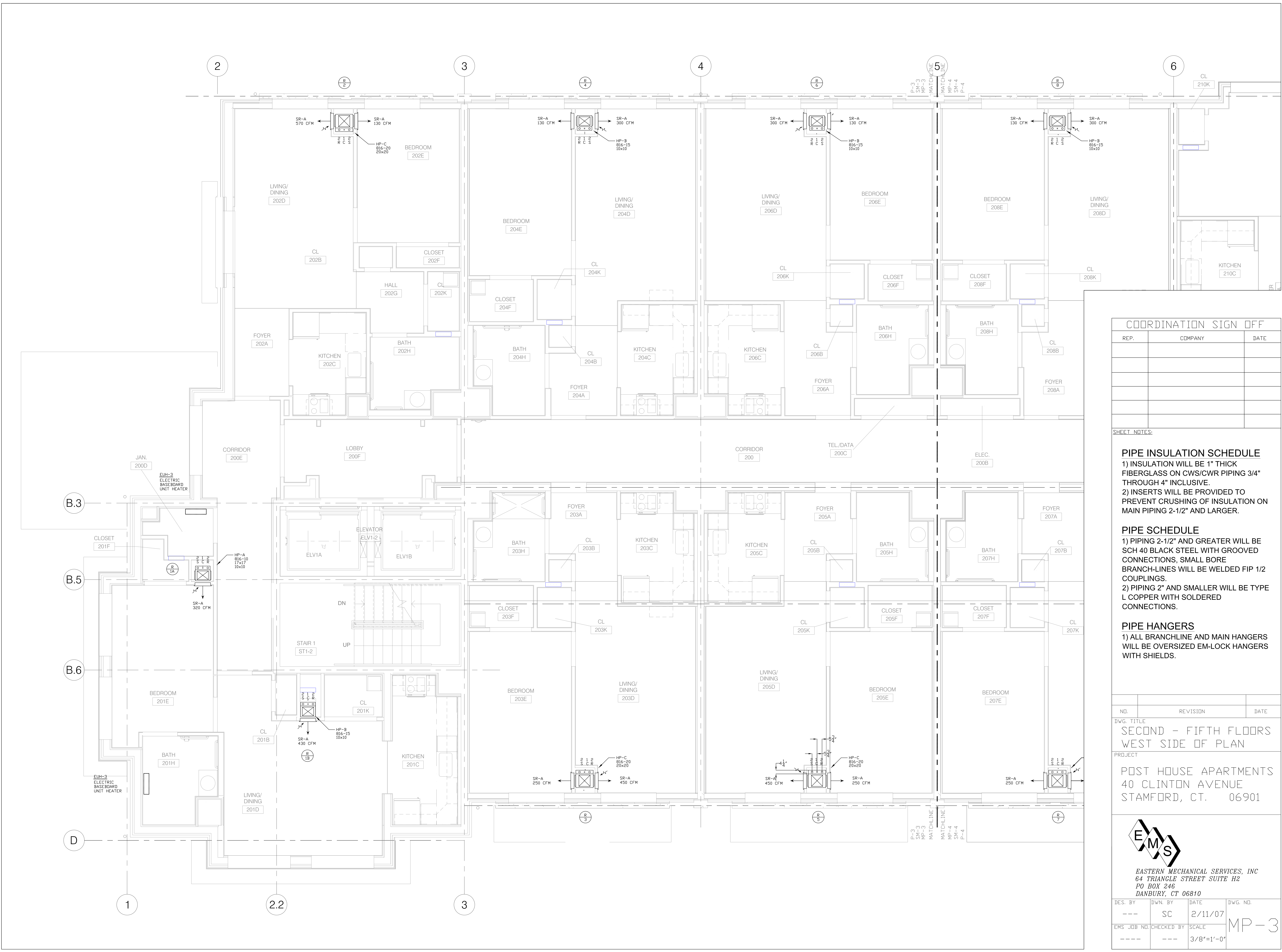
NO.	REVISION	DATE

DWG. TITLE  
FIRST FLOOR  
EAST SIDE OF PLAN

PROJECT  
POST HOUSE APARTMENTS  
40 CLINTON AVENUE  
STAMFORD, CT. 06901

**EMS**  
 EASTERN MECHANICAL SERVICES, INC  
 64 TRIANGLE STREET SUITE H2  
 PO BOX 246  
 DANBURY, CT 06810

DES. BY	DWN. BY	DATE	DWG. NO.
---	SC	2/11/07	MP-2
EMS JOB NO.	CHECKED BY	SCALE	
---	---	3/8"=1'-0"	



COORDINATION SIGN OFF		
REP.	COMPANY	DATE

**SHEET NOTES:**

**PIPE INSULATION SCHEDULE**  
 1) INSULATION WILL BE 1" THICK FIBERGLASS ON CWS/CWR PIPING 3/4" THROUGH 4" INCLUSIVE.  
 2) INSERTS WILL BE PROVIDED TO PREVENT CRUSHING OF INSULATION ON MAIN PIPING 2-1/2" AND LARGER.

**PIPE SCHEDULE**  
 1) PIPING 2-1/2" AND GREATER WILL BE SCH 40 BLACK STEEL WITH GROOVED CONNECTIONS, SMALL BORE BRANCH-LINES WILL BE WELDED FIP 1/2 COUPLINGS.  
 2) PIPING 2" AND SMALLER WILL BE TYPE L COPPER WITH SOLDERED CONNECTIONS.

**PIPE HANGERS**  
 1) ALL BRANCHLINE AND MAIN HANGERS WILL BE OVERSIZED EM-LOCK HANGERS WITH SHIELDS.

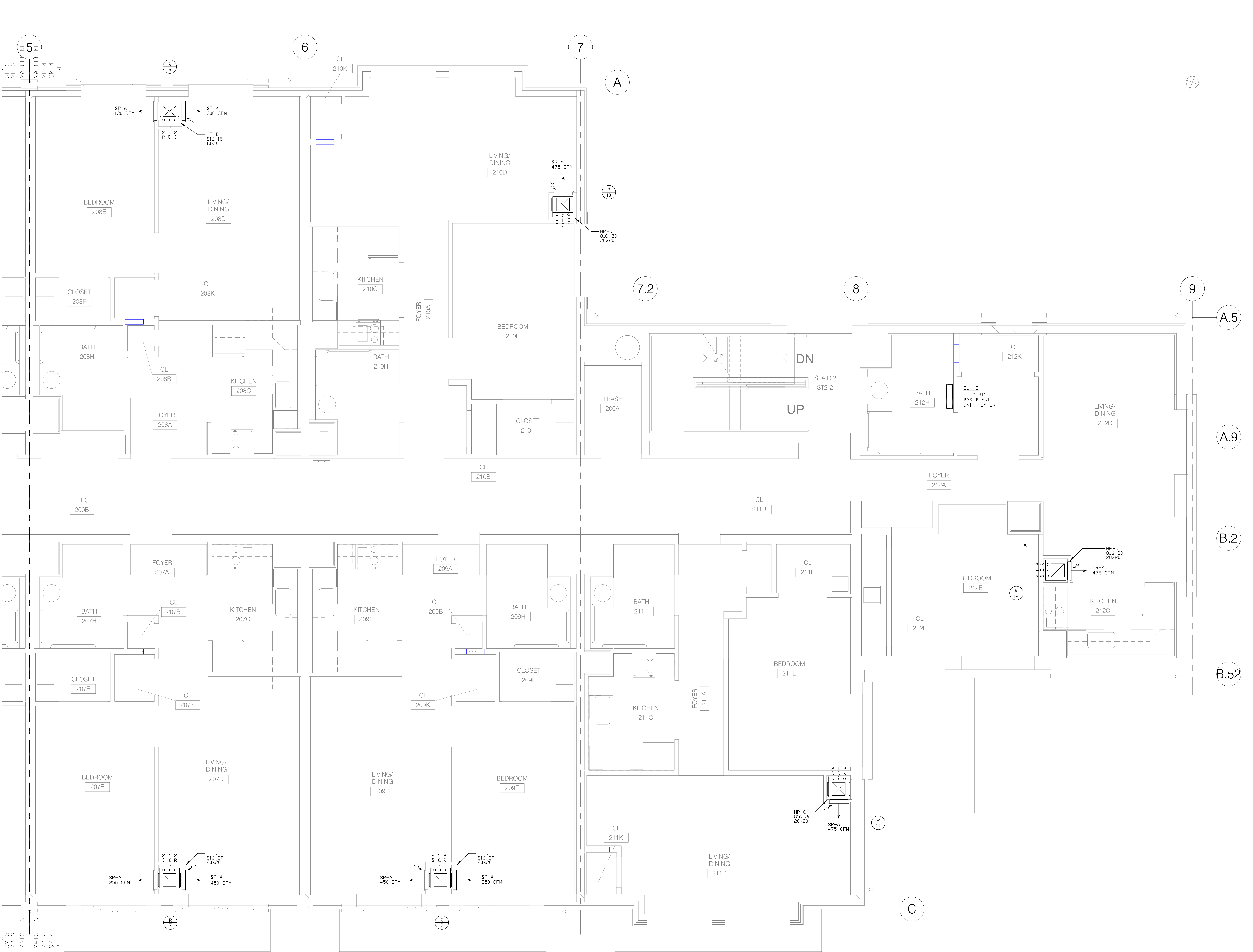
NO.	REVISION	DATE

DWG. TITLE  
 SECOND - FIFTH FLOORS WEST SIDE OF PLAN

PROJECT  
 POST HOUSE APARTMENTS  
 40 CLINTON AVENUE  
 STAMFORD, CT. 06901



DES. BY	DWN. BY	DATE	DWG. NO.
---	SC	2/11/07	MP-3
EMS JDB NO.	CHECKED BY	SCALE	
---	---	3/8"=1'-0"	



COORDINATION SIGN OFF		
REP.	COMPANY	DATE

**SHEET NOTES:**

**PIPE INSULATION SCHEDULE**  
 1) INSULATION WILL BE 1" THICK FIBERGLASS ON CWS/CWR PIPING 3/4" THROUGH 4" INCLUSIVE.  
 2) INSERTS WILL BE PROVIDED TO PREVENT CRUSHING OF INSULATION ON MAIN PIPING 2-1/2" AND LARGER.

**PIPE SCHEDULE**  
 1) PIPING 2-1/2" AND GREATER WILL BE SCH 40 BLACK STEEL WITH GROOVED CONNECTIONS, SMALL BORE BRANCH-LINES WILL BE WELDED FIP 1/2 COUPLINGS.  
 2) PIPING 2" AND SMALLER WILL BE TYPE L COPPER WITH SOLDERED CONNECTIONS.

**PIPE HANGERS**  
 1) ALL BRANCHLINE AND MAIN HANGERS WILL BE OVERSIZED EM-LOCK HANGERS WITH SHIELDS.

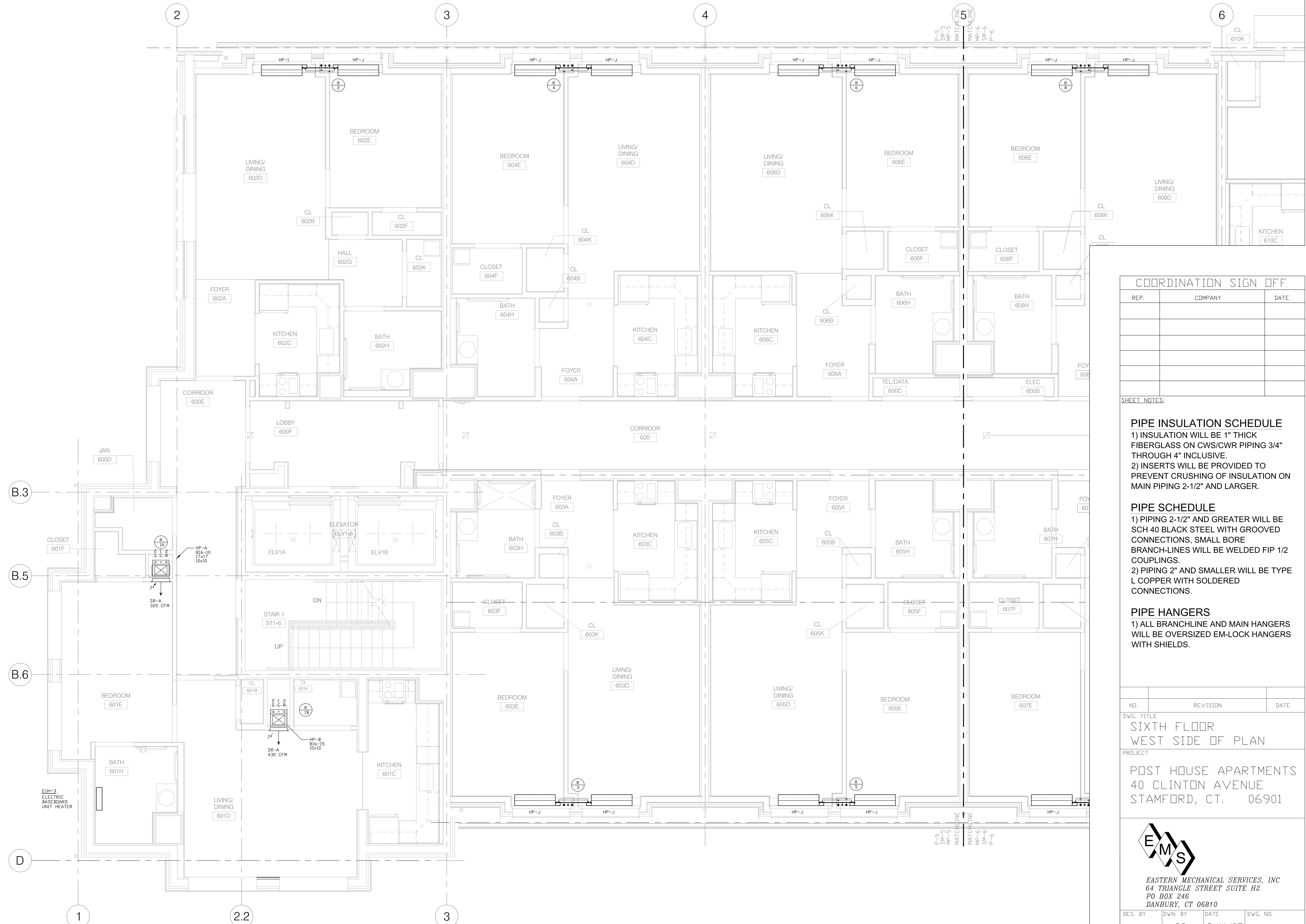
NO.	REVISION	DATE

DWG. TITLE  
 SECOND - FIFTH FLOORS  
 EAST SIDE OF PLAN

PROJECT  
 POST HOUSE APARTMENTS  
 40 CLINTON AVENUE  
 STAMFORD, CT. 06901

**EMS**  
 EASTERN MECHANICAL SERVICES, INC  
 64 TRIANGLE STREET SUITE H2  
 PO BOX 246  
 DANBURY, CT 06810

DES. BY	DWN. BY	DATE	DWG. NO.
---	SC	2/11/07	MP-4
EMS JDB NO.	CHECKED BY	SCALE	
---	---	3/8"=1'-0"	



COORDINATION SIGN OFF		
REP.	COMPANY	DATE

**SHEET NOTES:**

**PIPE INSULATION SCHEDULE**  
 1) INSULATION WILL BE 1" THICK FIBERGLASS ON CWS/CWR PIPING 3/4" THROUGH 4" INCLUSIVE.  
 2) INSERTS WILL BE PROVIDED TO PREVENT CRUSHING OF INSULATION ON MAIN PIPING 2-1/2" AND LARGER.

**PIPE SCHEDULE**  
 1) PIPING 2-1/2" AND GREATER WILL BE SCH 40 BLACK STEEL WITH GROOVED CONNECTIONS, SMALL BORE BRANCH-LINES WILL BE WELDED FIP 1/2 COUPLINGS.  
 2) PIPING 2" AND SMALLER WILL BE TYPE L COPPER WITH SOLDERED CONNECTIONS.

**PIPE HANGERS**  
 1) ALL BRANCHLINE AND MAIN HANGERS WILL BE OVERSIZED EM-LOCK HANGERS WITH SHIELDS.

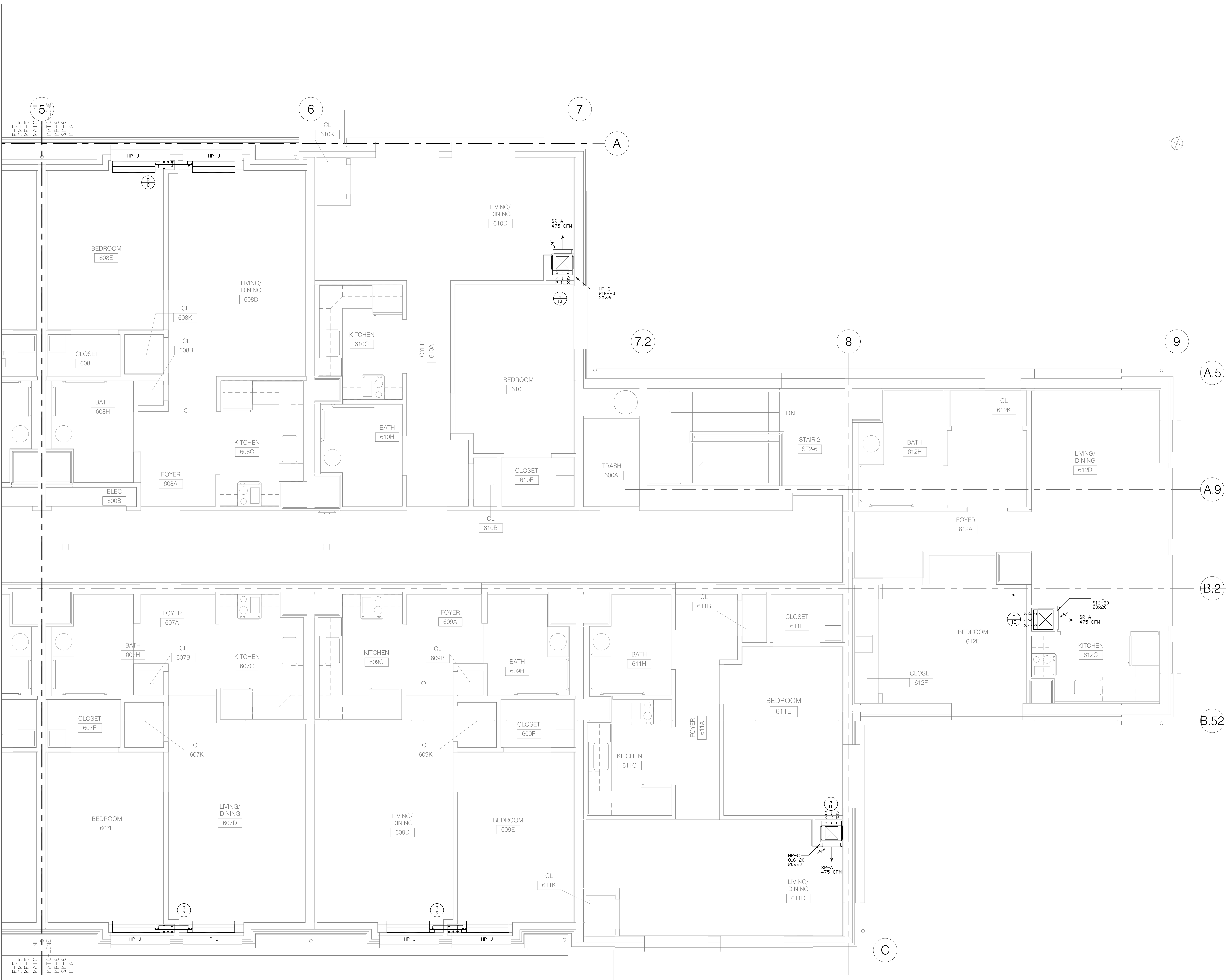
NO.	REVISION	DATE

DWG. TITLE  
 SIXTH FLOOR  
 WEST SIDE OF PLAN

PROJECT  
 POST HOUSE APARTMENTS  
 40 CLINTON AVENUE  
 STAMFORD, CT. 06901

**EMS**  
 EASTERN MECHANICAL SERVICES, INC  
 64 TRIANGLE STREET SUITE H2  
 PO BOX 246  
 DANBURY, CT 06810

DES. BY	DWN. BY	DATE	DWG. NO.
---	SC	2/11/07	MP-5
EMS JDB NO.	CHECKED BY	SCALE	
---	---	3/8"=1'-0"	



COORDINATION SIGN OFF		
REP.	COMPANY	DATE

SHEET NOTES:

**PIPE INSULATION SCHEDULE**  
 1) INSULATION WILL BE 1" THICK FIBERGLASS ON CWS/CWR PIPING 3/4" THROUGH 4" INCLUSIVE.  
 2) INSERTS WILL BE PROVIDED TO PREVENT CRUSHING OF INSULATION ON MAIN PIPING 2-1/2" AND LARGER.

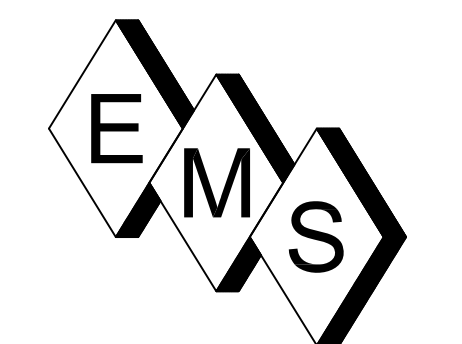
**PIPE SCHEDULE**  
 1) PIPING 2-1/2" AND GREATER WILL BE SCH 40 BLACK STEEL WITH GROOVED CONNECTIONS, SMALL BORE BRANCH-LINES WILL BE WELDED FIP 1/2 COUPLINGS.  
 2) PIPING 2" AND SMALLER WILL BE TYPE L COPPER WITH SOLDERED CONNECTIONS.

**PIPE HANGERS**  
 1) ALL BRANCHLINE AND MAIN HANGERS WILL BE OVERSIZED EM-LOCK HANGERS WITH SHIELDS.

NO.	REVISION	DATE

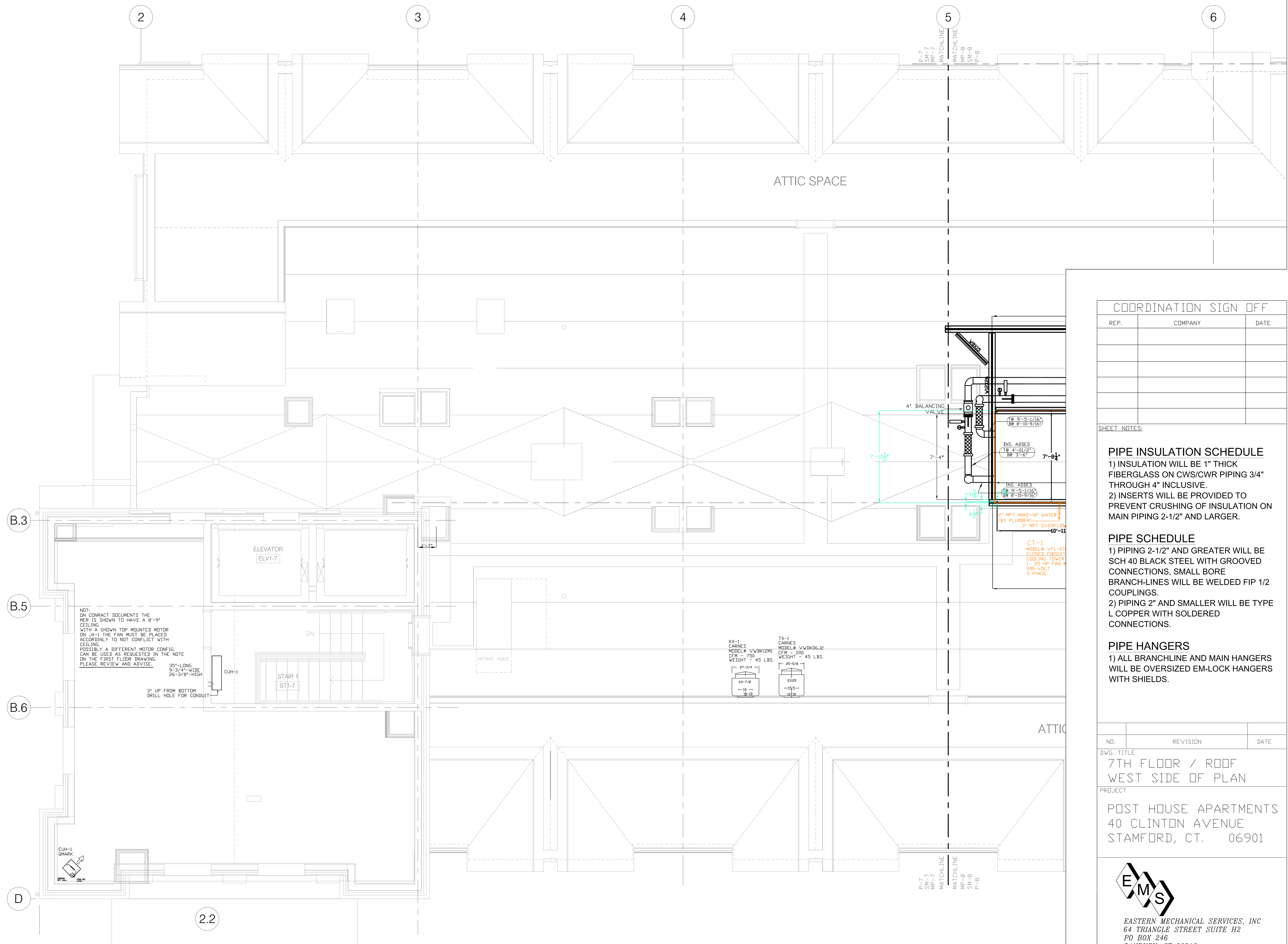
DWG. TITLE  
 SIXTH FLOOR  
 EAST SIDE OF PLAN

PROJECT  
 POST HOUSE APARTMENTS  
 40 CLINTON AVENUE  
 STAMFORD, CT. 06901



EASTERN MECHANICAL SERVICES, INC.  
 64 TRIANGLE STREET SUITE H2  
 PO BOX 246  
 DANBURY, CT 06810

DES. BY	DWN. BY	DATE	DWG. NO.
---	SC	2/11/07	MP-6
EMS JDB NO.	CHECKED BY	SCALE	
---	---	3/8"=1'-0"	



ATTIC SPACE

COORDINATION SIGN OFF		
REP.	COMPANY	DATE

SHEET NOTES:

**PIPE INSULATION SCHEDULE**  
 1) INSULATION WILL BE 1" THICK FIBERGLASS ON CWS/CWR PIPING 3/4" THROUGH 4" INCLUSIVE.  
 2) INSERTS WILL BE PROVIDED TO PREVENT CRUSHING OF INSULATION ON MAIN PIPING 2-1/2" AND LARGER.

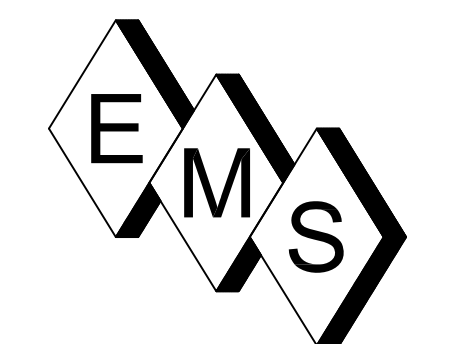
**PIPE SCHEDULE**  
 1) PIPING 2-1/2" AND GREATER WILL BE SCH 40 BLACK STEEL WITH GROOVED CONNECTIONS, SMALL BORE BRANCH-LINES WILL BE WELDED FIP 1/2" COUPLINGS.  
 2) PIPING 2" AND SMALLER WILL BE TYPE L COPPER WITH SOLDERED CONNECTIONS.

**PIPE HANGERS**  
 1) ALL BRANCHLINE AND MAIN HANGERS WILL BE OVERSIZED EM-LOCK HANGERS WITH SHIELDS.

NO.	REVISION	DATE

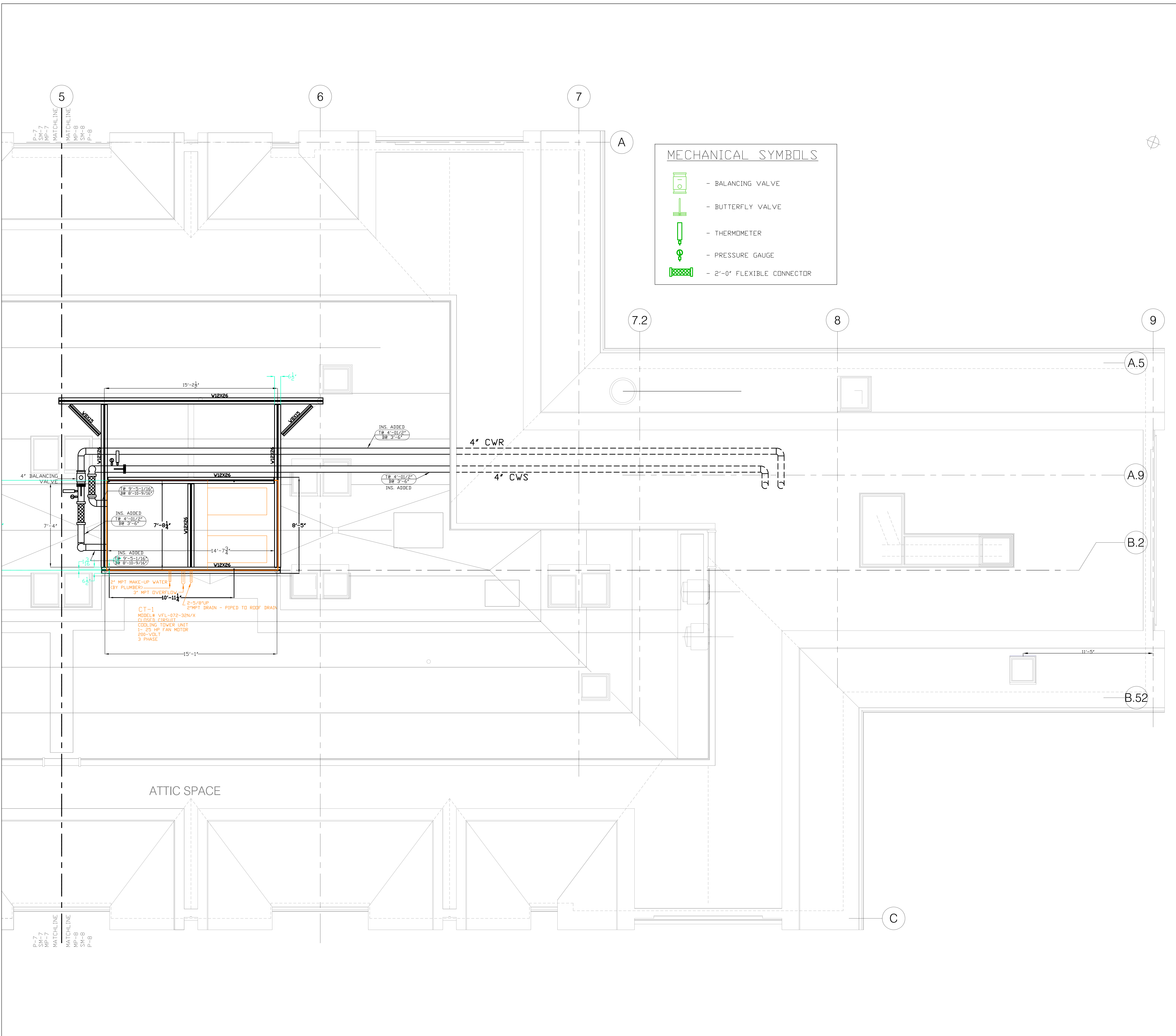
DWG. TITLE  
7TH FLOOR / ROOF  
WEST SIDE OF PLAN

PROJECT  
POST HOUSE APARTMENTS  
40 CLINTON AVENUE  
STAMFORD, CT. 06901



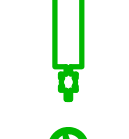
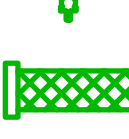



EASTERN MECHANICAL SERVICES, INC  
 64 TRIANGLE STREET SUITE H2  
 PO BOX 246  
 DANBURY, CT 06810

DES. BY	DWN. BY	DATE	DWG. NO.
---	SC	2/11/07	MP-7
EMS JDB NO.	CHECKED BY	SCALE	MP-7
---	---	3/8"=1'-0"	



**MECHANICAL SYMBOLS**

-  - BALANCING VALVE
-  - BUTTERFLY VALVE
-  - THERMOMETER
-  - PRESSURE GAUGE
-  - 2'-0" FLEXIBLE CONNECTOR

COORDINATION SIGN OFF		
REP.	COMPANY	DATE

**SHEET NOTES:**

**PIPE INSULATION SCHEDULE**  
 1) INSULATION WILL BE 1" THICK FIBERGLASS ON CWS/CWR PIPING 3/4" THROUGH 4" INCLUSIVE.  
 2) INSERTS WILL BE PROVIDED TO PREVENT CRUSHING OF INSULATION ON MAIN PIPING 2-1/2" AND LARGER.

**PIPE SCHEDULE**  
 1) PIPING 2-1/2" AND GREATER WILL BE SCH 40 BLACK STEEL WITH GROOVED CONNECTIONS, SMALL BORE BRANCH-LINES WILL BE WELDED FIP 1/2 COUPLINGS.  
 2) PIPING 2" AND SMALLER WILL BE TYPE L COPPER WITH SOLDERED CONNECTIONS.

**PIPE HANGERS**  
 1) ALL BRANCHLINE AND MAIN HANGERS WILL BE OVERSIZED EM-LOCK HANGERS WITH SHIELDS.

NO.	REVISION	DATE

DWG. TITLE  
7TH FLOOR / ROOF  
EAST SIDE OF PLAN

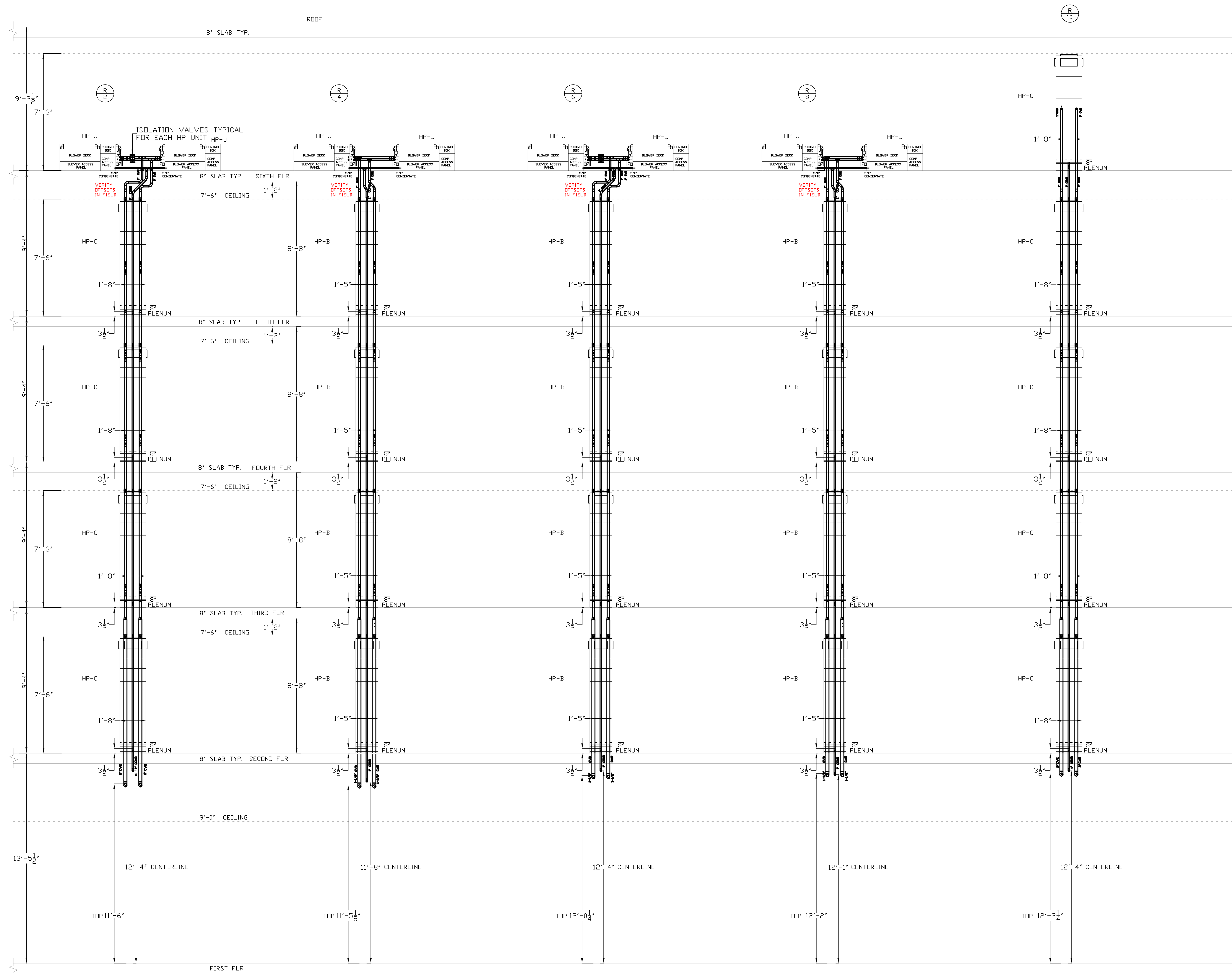
PROJECT  
POST HOUSE APARTMENTS  
40 CLINTON AVENUE  
STAMFORD, CT. 06901



**EASTERN MECHANICAL SERVICES, INC**  
 64 TRIANGLE STREET SUITE H2  
 PO BOX 246  
 DANBURY, CT 06810

DES. BY	DWN. BY	DATE	DWG. NO.
---	SC	2/11/07	MP-8
EMS JOB NO.	CHECKED BY	SCALE	
----	---	3/8"=1'-0"	





	A	B	C
Ⓐ	816-10	17 sq. 10 GRILLE	4.25 CHASE DPNG
Ⓑ	816-15	17 sq. 10 GRILLE	4.25 CHASE DPNG
Ⓒ	816-15	20 sq. 13 GRILLE	4.25 CHASE DPNG

WEST END OF BLDG AT COLUMN LINE A  
LOOKING AT COLUMN LINE A FROM THE SOUTH  
3/8" SCALE  
DRAWING MP-9

COORDINATION SIGN OFF

REP.	COMPANY	DATE

SHEET NOTES:

PIPE INSULATION SCHEDULE

- INSULATION WILL BE 1" THICK FIBERGLASS ON CWS/CWR PIPING 3/4" THROUGH 4" INCLUSIVE.
- INSERTS WILL BE PROVIDED TO PREVENT CRUSHING OF INSULATION ON MAIN PIPING 2-1/2" AND LARGER.

PIPE SCHEDULE

- PIPING 2-1/2" AND GREATER WILL BE SCH 40 BLACK STEEL WITH GROOVED CONNECTIONS, SMALL BORE BRANCH-LINES WILL BE WELDED FIP 1/2 COUPLINGS.
- PIPING 2" AND SMALLER WILL BE TYPE L COPPER WITH SOLDERED CONNECTIONS.

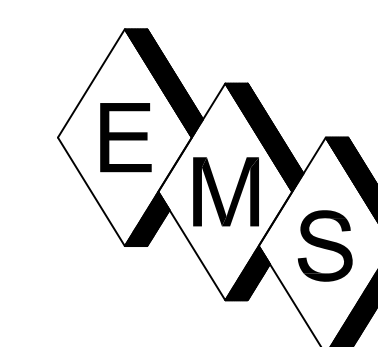
PIPE HANGERS

- ALL BRANCHLINE AND MAIN HANGERS WILL BE OVERSIZED EM-LOCK HANGERS WITH SHIELDS.

NO.	REVISION	DATE

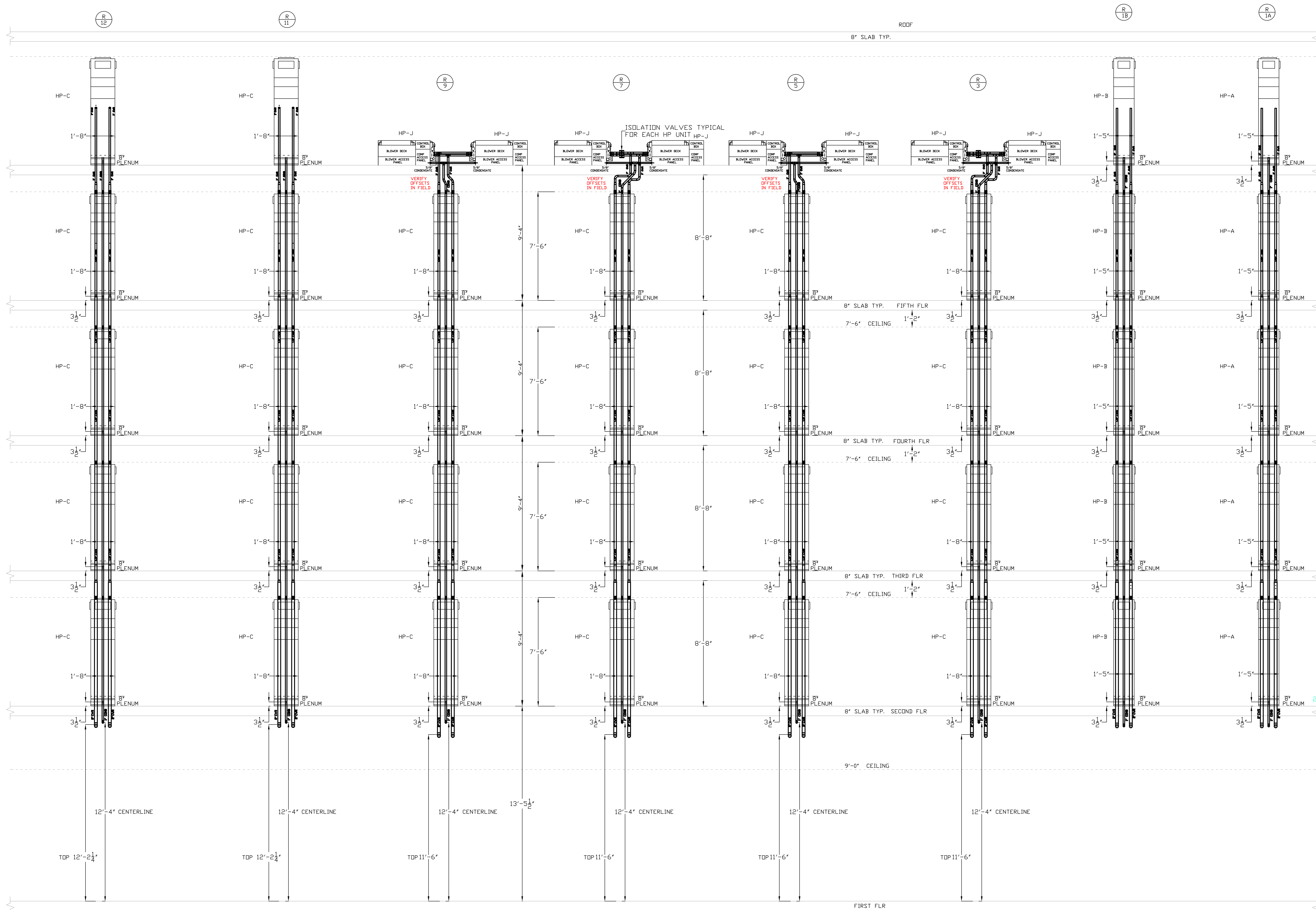
DWG. TITLE  
MECHANICAL PIPING RISERS  
LOOKING AT COL-LINE A FROM SOUTH

PROJECT  
POST HOUSE APARTMENTS  
40 CLINTON AVENUE  
STAMFORD, CT. 06901



EASTERN MECHANICAL SERVICES, INC  
64 TRIANGLE STREET SUITE H2  
PO BOX 246  
DANBURY, CT 06810

DES. BY	DWN. BY	DATE	DWG. NO.
---	SC	2/11/07	MP-9
EMS JDB NO.	CHECKED BY	SCALE	
---	---	3/8"=1'-0"	



	A	B	C
(A)	816-10 17 sq.	10 GRILLE 4.25 CHASE DPNG	
(B)	816-15 17 sq.	10 GRILLE 4.25 CHASE DPNG	
(C)	816-15 20 sq.	13 GRILLE 4.25 CHASE DPNG	

WEST END OF BLDG AT COLUMN LINE C  
 LOOKING AT COLUMN LINE C FROM THE NORTH  
 3/8" SCALE  
 DRAWING MP-10

COORDINATION SIGN OFF

REP.	COMPANY	DATE

SHEET NOTES:

PIPE INSULATION SCHEDULE

- INSULATION WILL BE 1" THICK FIBERGLASS ON CWS/CWR PIPING 3/4" THROUGH 4" INCLUSIVE.
- INSERTS WILL BE PROVIDED TO PREVENT CRUSHING OF INSULATION ON MAIN PIPING 2-1/2" AND LARGER.

PIPE SCHEDULE

- PIPING 2-1/2" AND GREATER WILL BE SCH 40 BLACK STEEL WITH GROOVED CONNECTIONS, SMALL BORE BRANCH-LINES WILL BE WELDED FIP 1/2 COUPLINGS.
- PIPING 2" AND SMALLER WILL BE TYPE L COPPER WITH SOLDERED CONNECTIONS.

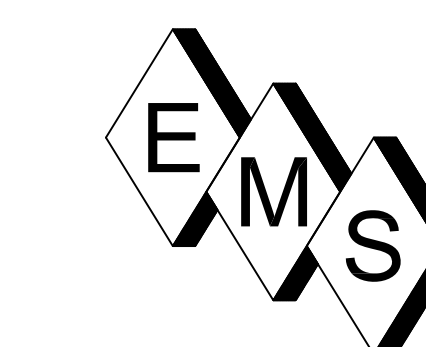
PIPE HANGERS

- ALL BRANCHLINE AND MAIN HANGERS WILL BE OVERSIZED EM-LOCK HANGERS WITH SHIELDS.

NO.	REVISION	DATE

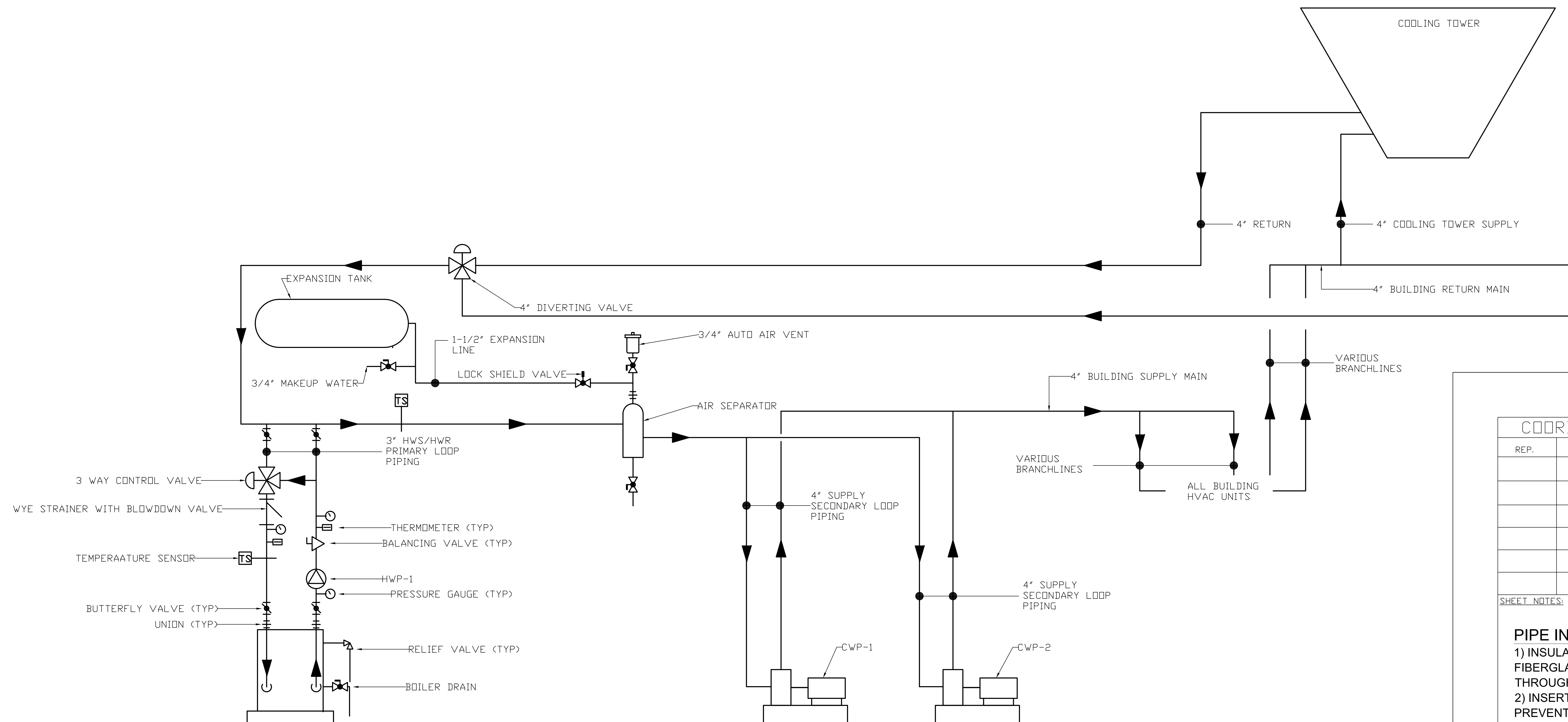
DWG. TITLE  
 MECHANICAL PIPING RISERS  
 LOOKING AT COL-LINE A FROM SOUTH

PROJECT  
 POST HOUSE APARTMENTS  
 40 CLINTON AVENUE  
 STAMFORD, CT. 06901



EASTERN MECHANICAL SERVICES, INC  
 64 TRIANGLE STREET SUITE H2  
 PO BOX 246  
 DANBURY, CT 06810

DES. BY	DWN. BY	DATE	DWG. NO.
---	SC	2/11/07	MP-10
EMS JDB NO.	CHECKED BY	SCALE	
---	---	3/8"=1'-0"	



PIPING SCHEMATIC

COORDINATION SIGN OFF		
REP.	COMPANY	DATE

SHEET NOTES:

**PIPE INSULATION SCHEDULE**  
 1) INSULATION WILL BE 1" THICK FIBERGLASS ON CWS/CWR PIPING 3/4" THROUGH 4" INCLUSIVE.  
 2) INSERTS WILL BE PROVIDED TO PREVENT CRUSHING OF INSULATION ON MAIN PIPING 2-1/2" AND LARGER.

**PIPE SCHEDULE**  
 1) PIPING 2-1/2" AND GREATER WILL BE SCH 40 BLACK STEEL WITH GROOVED CONNECTIONS, SMALL BORE BRANCH-LINES WILL BE WELDED FIP 1/2 COUPLINGS.  
 2) PIPING 2" AND SMALLER WILL BE TYPE L COPPER WITH SOLDERED CONNECTIONS.

**PIPE HANGERS**  
 1) ALL BRANCHLINE AND MAIN HANGERS WILL BE OVERSIZED EM-LOCK HANGERS WITH SHIELDS.

NO.	REVISION	DATE

DWG. TITLE  
MECHANICAL DETAILS

PROJECT  
 POST HOUSE APARTMENTS  
 40 CLINTON AVENUE  
 STAMFORD, CT. 06901

**EMS**  
 EASTERN MECHANICAL SERVICES, INC  
 64 TRIANGLE STREET SUITE H2  
 PO BOX 246  
 DANBURY, CT 06810

DES. BY	DWN. BY	DATE	DWG. NO.
---	SC	2/11/07	MP-11
EMS JOB NO.	CHECKED BY	SCALE	
----	---	3/8"=1'-0"	